



Volkswagen Transporter T6			
Winch			
Nummer:	1214 0000	Stand:	03.2020
Revision:	03	Sprache:	EN

Installation Guide 1214 0000

This installation guide applies to part n°/descriptions:

1214 0000 T6 – Winch attachment kit incl. Winch

1214 0002 T6 – Winch attachment kit



Volkswagen Transporter T6			
Winch			
Nummer:	1214 0000	Stand:	03.2020
Revision:	03	Sprache:	EN

Important

To ensure proper function and optimal quality of our parts, their installation must be done in accordance with this installation guide and according to Volkswagen manufacture's specifications in a professional workshop. SEIKEL GmbH and its employees shall not be responsible for damage and its consequences of any nature, which are caused due to non-observance or ignorance of these guidelines. Warranties shall be void for incorrectly performed installations.

Installation guide

Please refer to the Volkswagen instructions for the exact working steps as well as the tightening torques. In case of deviation, our specifications shall be applicable.

NOTE!

All the drill holes and breakthroughs must be deburred from both the sides. Metal swarfs are to be removed / vacuumed up immediately, and it has to be ensured that no swarfs fall into the hollow space in the body!

Apply paint (as per current valid VW repair manual "Paint", refer to ELSA):

1. Apply wash primer and allow it to dry in accordance with the item description. A hot-air dryer can be used, if necessary. We recommend: 1k Wash primer LLS MAX 106 M2.
2. Apply filler and allow it to dry in accordance with the item description. A hot-air dryer can be used, if necessary. We recommend 2K-HS filler LLS MAX 202 M2.
3. Apply base coat on visible areas based on the vehicle-specific varnish and allow base coat to dry in accordance with the item description. A hot-air dryer can be used, if necessary.
4. Protect all cutting edges, hollow spaces or drill holes additionally with anti-corrosion wax, if required using a small brush. We recommend transparent preservative wax AKR 321 M 15 4.

Parts list 1214 0000



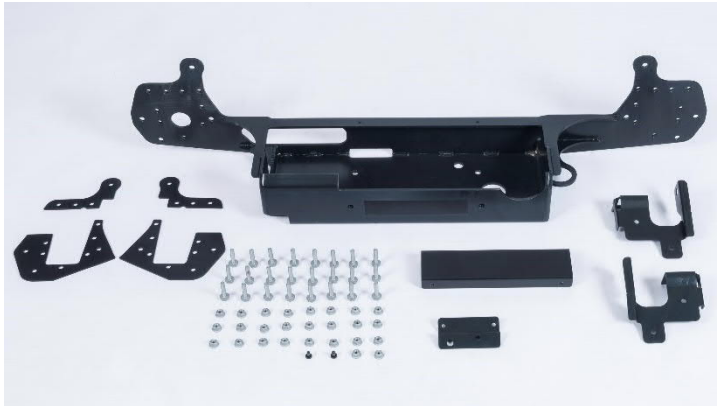
- 1x winch
- 1x plastic cable
- 1x safety hook
- 1x cable fairlead
- 1x winch installation kit

- 1x stencil for winch fairlead section
- 1x winch holder
- 2x reinforcement plate below
- 2x reinforcement plate top
- 1x holder for radiator right
- 1x holder for radiator left
- 1x holder for ECU
- 1x angle plate for cable routing
- 2x M10x40 countersunk head screw
- 26x M8x35 hexagon head screw
- 26x M8 hexagon locking nut
- 2x M6x10 torx screw

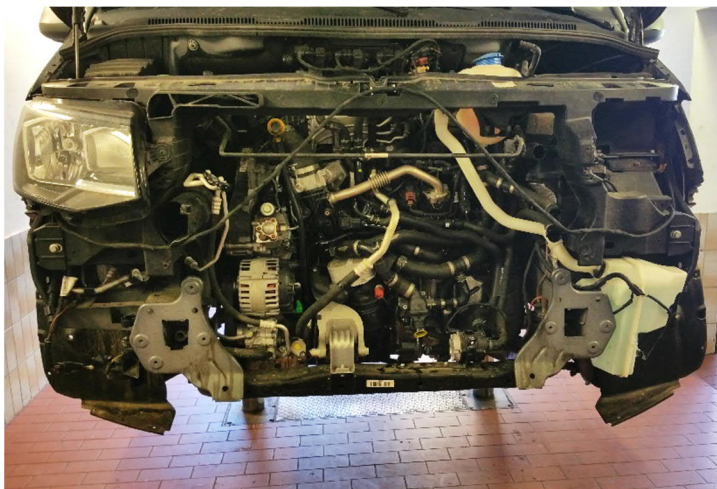


- 1x coolant hose 7E0 121 101 E
- 1x coolant hose 7E0 122 051 E
- 1x quick coupling 3B0 122 291 C
- 2x spring band clamp 40x12
- 1x edge guard

Parts list 1214 0002

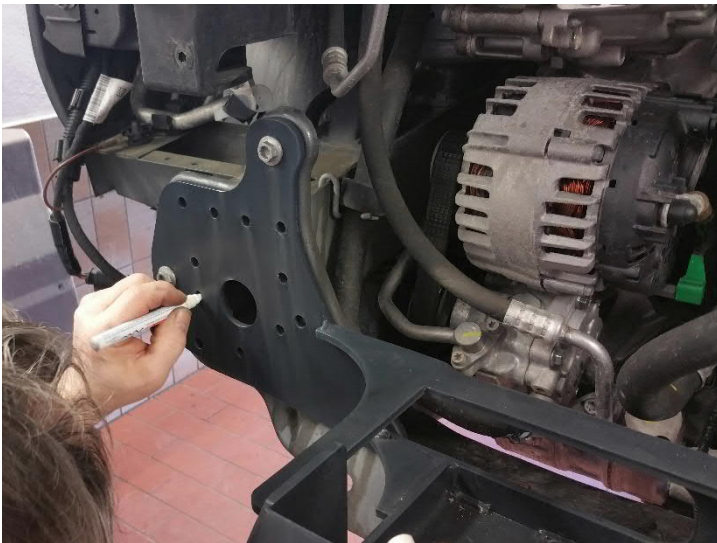


- 1x stencil for winch window section
- 1x winch support
- 2x reinforcement plate below
- 2x reinforcement plate top
- 1x holder for radiator right
- 1x holder for radiator left
- 1x holder for ECU
- 1x angle plate for cable routing
- 2x M10x40 countersunk head screw
- 26x M8x35 hexagon head screw
- 26x M8 hexagon locking nut
- 2x M6x10 hexagon head screw
- 1x coolant hose 7E0 121 101 E
- 1x coolant hose 7E0 122 051 E
- 1x quick coupling 3B0 122 291 C
- 2x spring band clamp 40x12
- 1x edge guard

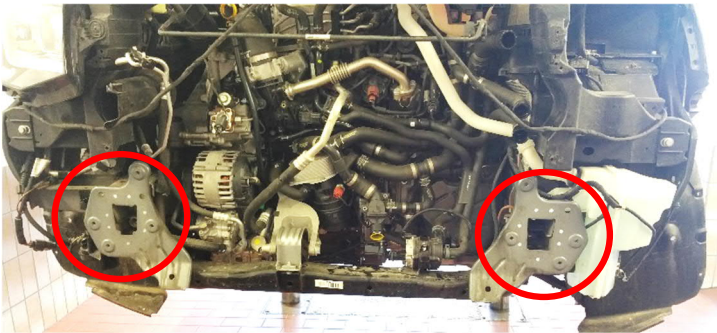


Instruction

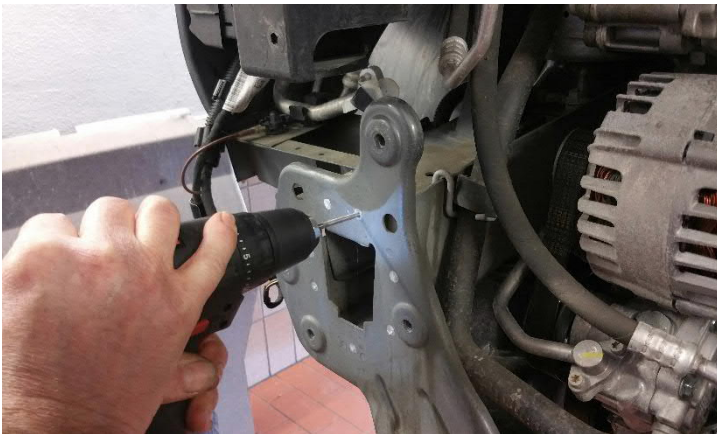
Dismount vehicle front as shown in the adjacent image (absolutely follow manufacturer specifications (ELSA) and safety guidelines).



Pre-assemble the winch holder on the frame heads and mark the holes that are yet to be done.



Dismount the winch holder again.



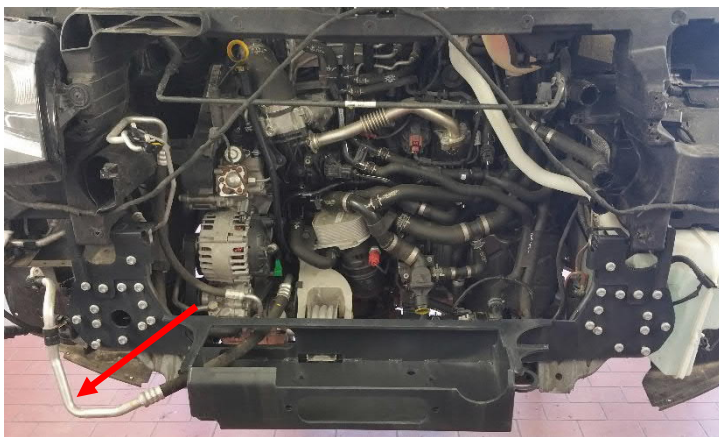
Pre-drill the marked spots and drill 10 mm.



Deburr all the drilled holes and protect against corrosion as shown on page 2.

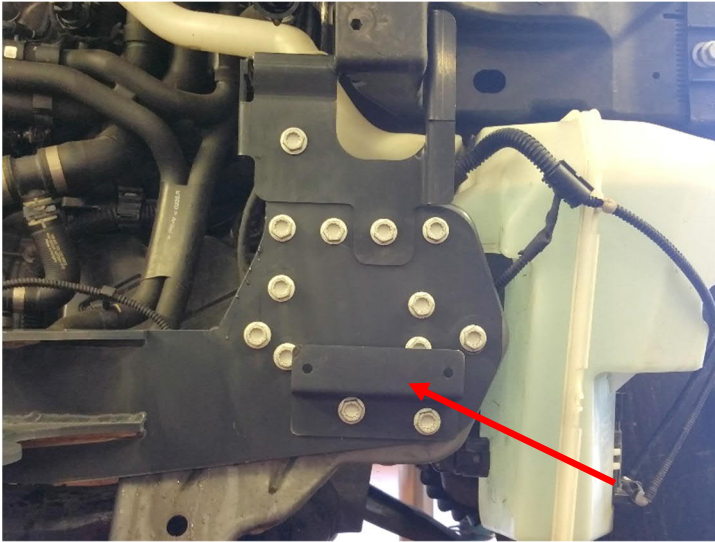


Insert the 4 reinforcement plates supplied in the delivery from rear in both the frame heads.



Fix the winch holder along with the left and right holder for the cooling pack on the frame heads. Use the 26 M8x35 hexagon screws and the M8 hexagon locking nuts supplied in the delivery for fixing.

Pay attention that at the beginning of installation, the AC lines are run in through the winch holder and connected to the vehicle.



As seen in the image, install the holder for ECU supplied in the delivery on the left bottom of the winch holder.

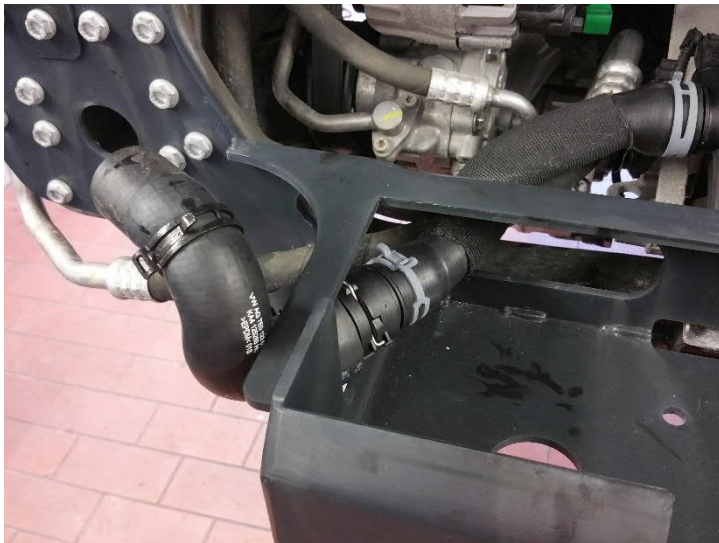
Finally, tighten all the fixed M8 screw connections with 25 Nm.



Fix the edge guard supplied in the delivery on the right plate edge of the front engine support.



Separate the supplied and preassembled coolant hose on the coupling and replace the longer piece, as shown in the image, with the hose installed in the vehicle.



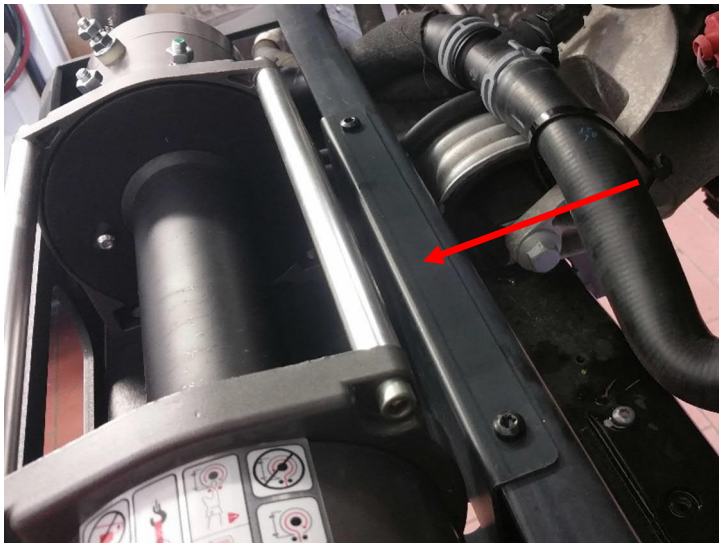
Connect the short hose bend, which was separated earlier, back to the long hose piece, as shown in the image.



Insert the winch incl. earth cable supplied in kit 1214 0000 in the winch holder and fix. Guide the earth cable on the left side out of the winch holder.

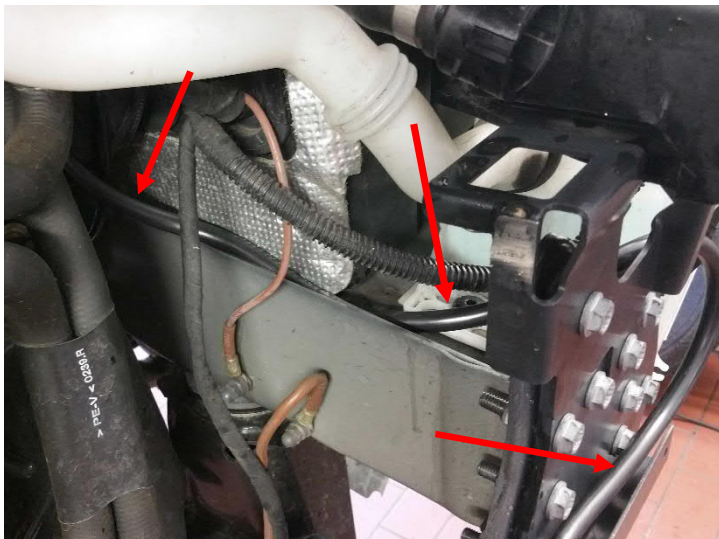


Tighten the 4 fixing screws of the winch with 55 Nm.

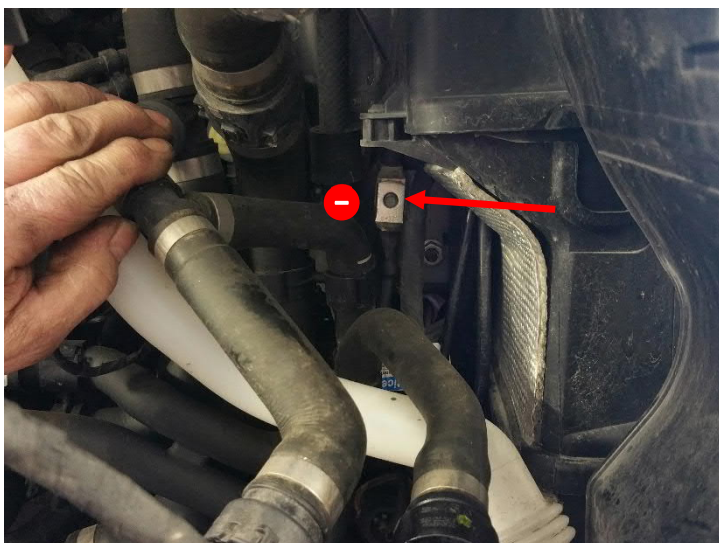


Fix the angle plate for cable routing supplied in the delivery behind the winch on the winch support with both the torx screws M6x10 supplied in the delivery. Tighten both the screws with 10 Nm.

Guide all the cables that are connected to the winch between the angle plate and the winch holder past the winch on the left side.



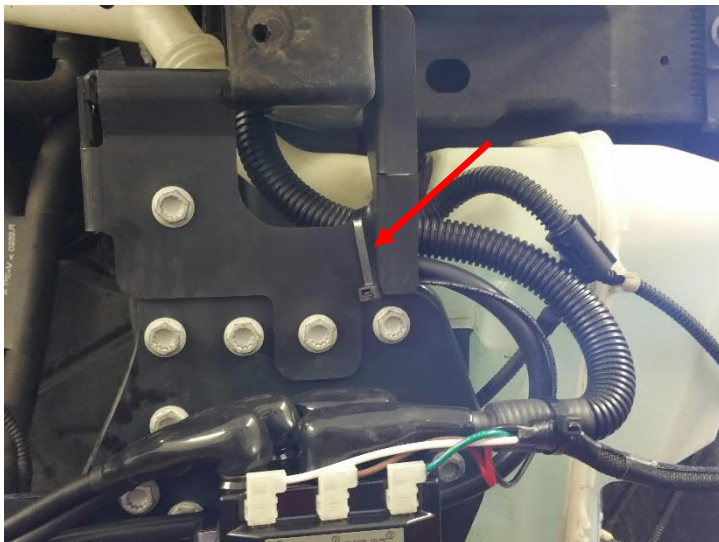
Lay the earth cable on the left vehicle side along the frame.



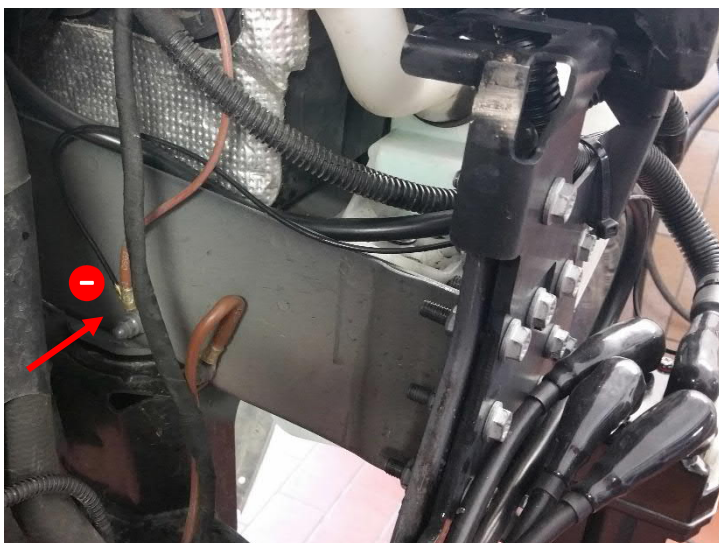
Fasten the earth cable at the earthing point (-), which is above the left vehicle frame as seen in the image.



Fix the ECU for the winch pre-assembled with all the cables on the earlier installed holder and connect the three thick cables to the cable winch, as described in the installation instructions of the cable winch.



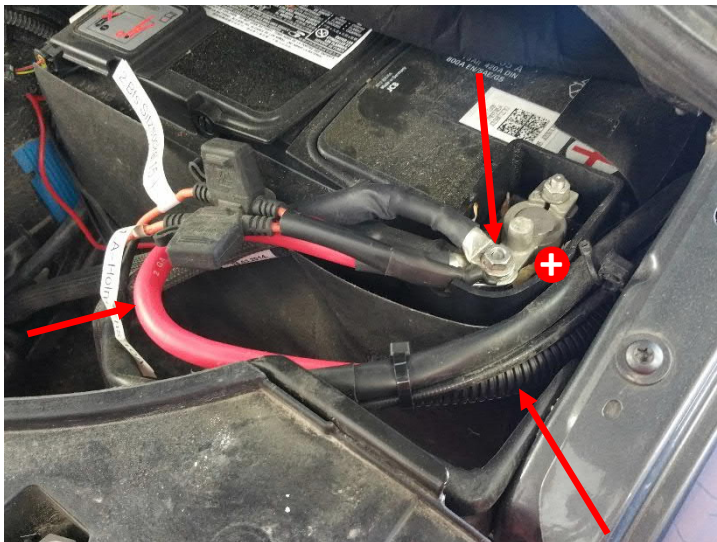
Fasten all the cables that lead from ECU to the vehicle at the radiator holder using a cable tie.



Fasten the earth cable of the ECU at the earthing point (-) on the vehicle frame.



Lay the plus cable in the corrugated pipe below the headlight position towards left of fender and along the fender upwards to vehicle battery.



Connect the plus cable on positive terminal (+) of the vehicle battery.



Important:

During maintenance work, we recommend protecting the plug connections and cable connections of the cable winch and the control unit with grease and, if necessary, protective wax against penetrating dirt and moisture.

Volkswagen Transporter T6			
Winch			
Number:	1214 0000	Stand:	03.2020
Revision:	03	Sprache:	EN



Fix the cable fairlead supplied in the delivery on the winch holder using the two countersunk head screws M10x40 and tighten with 35 Nm.

Finally guide the towing rope through the winch fairlead and fix on the winch drum. Now, coil the towing rope using the winch remote control on the drum.



Re-mount the left headlight and all the radiators and connect all the hose connections.



If the radiator is very tight on the winch, attach an abrasion protector, e.g. made of felt, to the winch to protect the radiator net.



Volkswagen Transporter T6			
Winch			
Nummer:	1214 0000	Stand:	03.2020
Revision:	03	Sprache:	EN



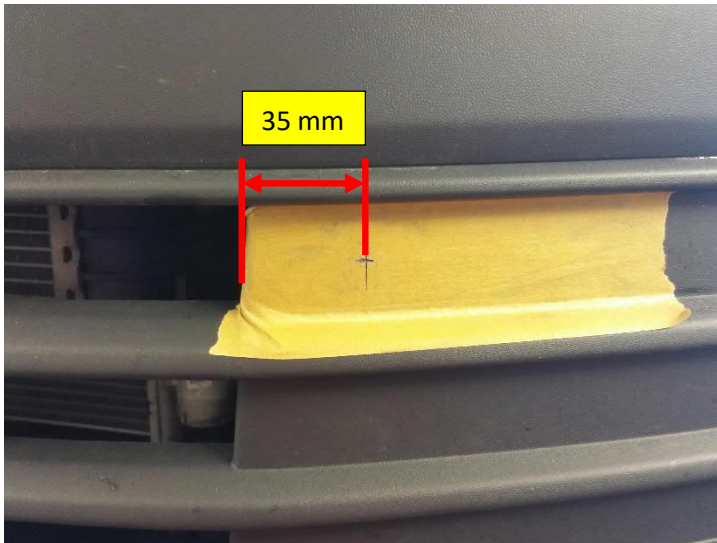
Mask the bumper in the area of marked surface with an adhesive tape and mark out the section for the cable fairlead onto the bumper using the stencil supplied in the delivery.



Cut the marked section from the bumper using workshop tools. Finally, mount the bumper on the vehicle.



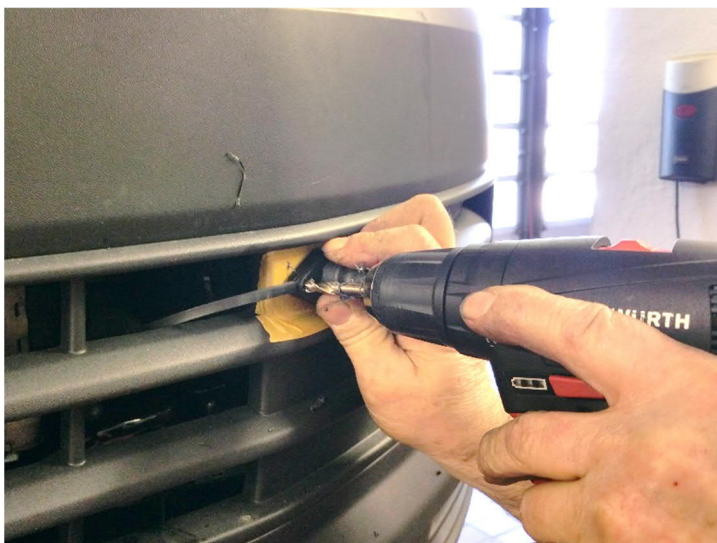
For connecting the remote control, mask the bumper as shown in the image.



The drill hole is marked 35 mm on the left next to the radiator opening in the centre of the impression.



Drill the marked hole on the diameter of the bushing using step drill.



Insert the bushing from outside through the hole and align the lugs with the fixing holes.

Then, transfer the fixing holes onto the bumper through drilling.



Fit the bushing from inside on the bumper and draw the outline of the connector from outside on the bumper.



Cut the outline of the connector from the bumper and fit the bushing back on the bumper from inside.



The completely mounted cable winch.