



Volkswagen Transporter T5 to T6.1			
Lowered hitch wagon/box van			
Number:	1215 0014	Stand:	04.2022
Revision:	00	Sprache:	EN

Installation guide 1215 0014

This installation guide applies to all this part n°/descriptions:

- 1215 0014 T5 to T6.1 – Lowered trailer hitch for station wagon / box van without interchangeable coupling system
- 1215 0015 T5 to T6.1 – Lowered trailer hitch for station wagon / box van with interchangeable coupling system

Important

To ensure proper function and optimal quality of our parts, their installation must be done in accordance with this installation guide and according to Volkswagen manufacture's specifications in a professional workshop. SEIKEL GmbH and its employees shall not be responsible for damage and its consequences of any nature, which are caused due to non-observance or ignorance of these guidelines. Warranties shall be void for incorrectly performed installations.

Installation guide

Please refer to the Volkswagen instructions for the exact working steps as well as the tightening torques. In case of deviation, our specifications shall be applicable.



Parts list 1215 0014

- 1x trailer hitch for wagon/box van
- 1x hitch with screw plate
- 2x filling piece of foam
- 6x M12x35 collar screw
- 4x M10x45 collar screw
- 4x M10 collar nut
- 1x M10 ring nut
- 1x M10x30 collar screw
- 3x M5x35 lens head screw



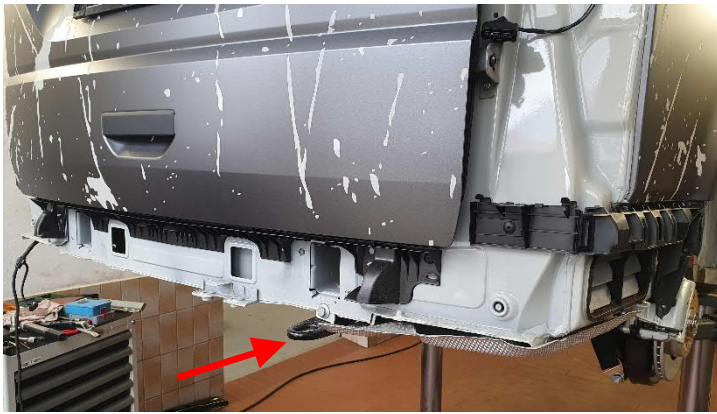
Parts list 1215 0015

- 1x trailer hitch for wagon/box van
- 1x hitch with screw plate
- 1x base plate for Rockinger Varioblock
- 1x Rockinger Varioblock
- 2x filling piece of foam
- 6x M12x35 collar screw
- 4x M10x40 countersunk screw
- 4x M10x45 socket head screw
- 8x M10 collar nut
- 1x M10 ring nut
- 1x M10x30 collar screw
- 3x M5x35 lens head screw



Parts list optional mounting profile

- 1x mounting profile 7H0 807 723
- 6x clip 7H0 867 299 01C
- 4x grommet 357 853 586 B
- 2x 5x20 collar nut WHT 003 207

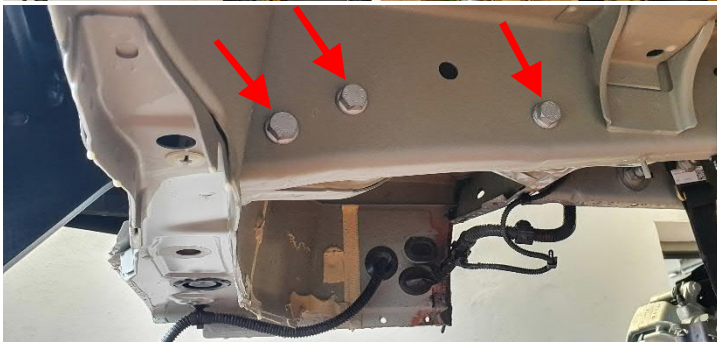


Instruction

Dismantle the rear bumper, the underbody panelling in the rear and the towing eye according to Volkswagen specifications.



Insert the trailer hitch from the rear into the side members and fasten it to the side members on the left and right with 3 pcs M12x35 collar screw. Tighten the screws according to Volkswagen specifications for original trailer hitch (120 Nm).



Place the two supplied foam filling pieces on left and right side of the square tube of towing bracket. Mark the overhang on the bolting bracket on the filling piece.

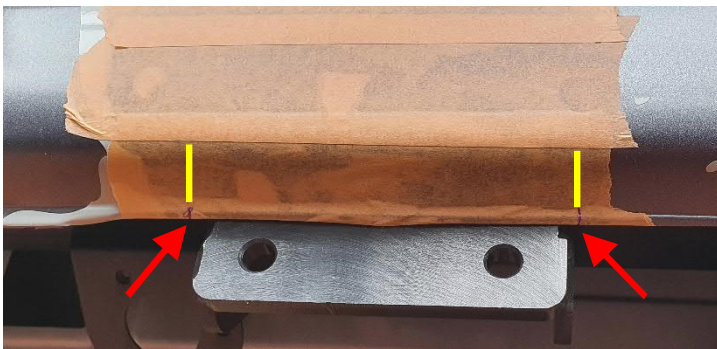


Shorten the filler pieces according to these markings, then glue them to the rectangular tube.



Place bumper back on the chassis and align centrally.

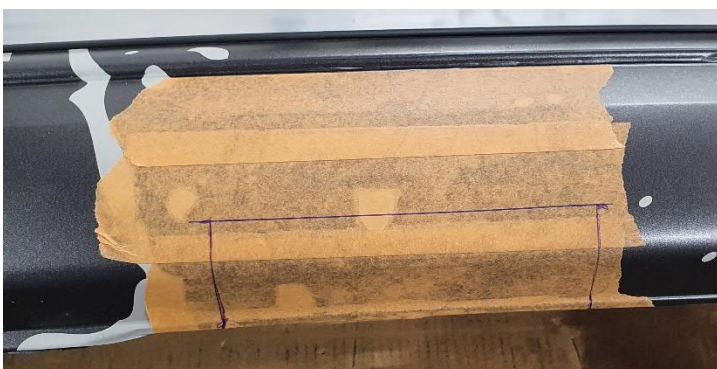
If your vehicle does not feature the fastening strip for the bumper, refer to the parts list for optional fastening strip and obtain the parts from your Volkswagen partner. Assemble them according to Volkswagen specifications.



Mask the bumper in the cut-out range for screw-on bracket and transfer the outer edges of the screw-on bracket by markings.



Remove the bumper from the vehicle again. Use a metal tape measure to mark two additional points vertically aligned 45 mm above the previously marked points.

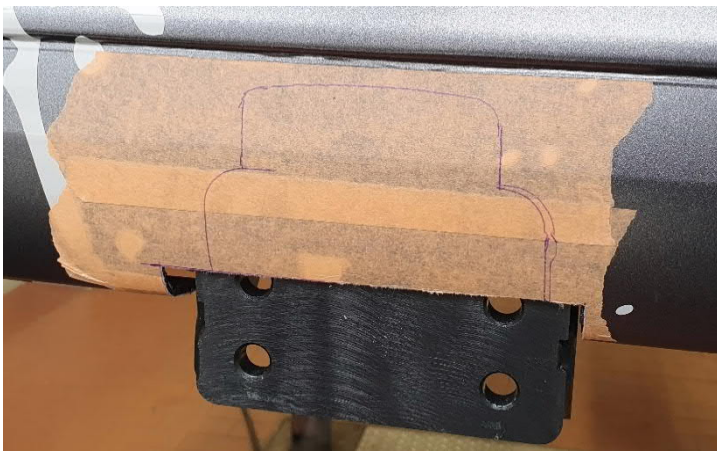


Connect the four marked points with a ruler and cut out the marked rectangle.



Place the bumper back on the vehicle. Then temporarily fasten the Rockinger Varioblock to the towing bracket with two M12x40 countersunk screws and two M12 collar nuts, as depicted.

Alternatively, the trailer hitch can be attached directly to the hitch bracket with a screw plate.



Then transfer the shape of the Varioblock to the bumper with a distance of 1-2 mm and cut out. Clean and deburr cut edges.



Before removing the provisionally mounted bumper from the vehicle, mark the points at which the two middle PDC sensors touch the filler pieces on the filler pieces.





Cut out the marked areas on the filler pieces with a sharp knife or scalpel.



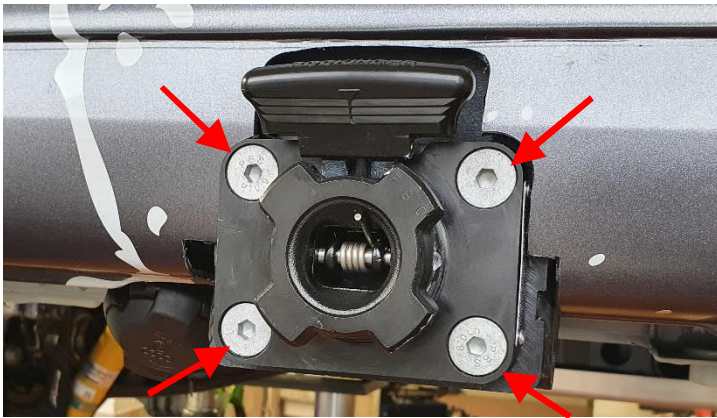
Install the Volkswagen wiring harness for the trailer hitch in the vehicle according to Volkswagen instructions, and fasten together with the wiring harness of the PDC to the trailer bracket with cable ties.



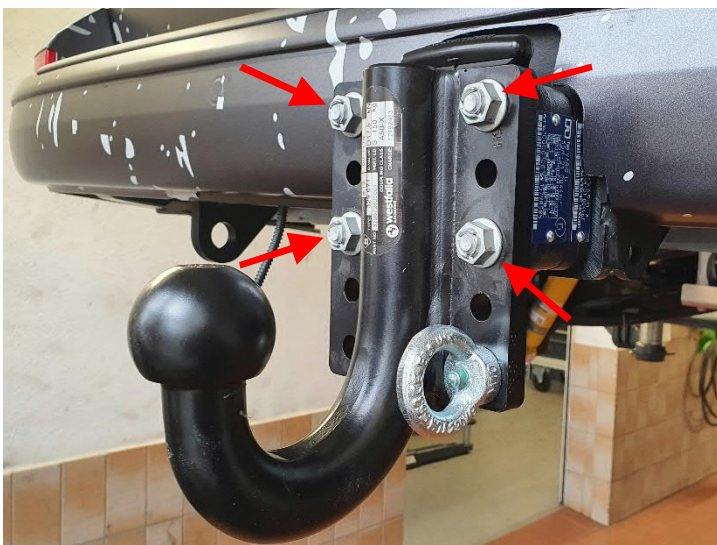
Fasten and tighten the trailer socket with the three supplied M5x35 pan head screws on the bracket plate of the towing bracket.



Reposition and secure the modified bumper to the vehicle.



Fasten the Rockinger Varioblock to the trailer hitch with four M12x40 countersunk screws and four M12 collar nuts as shown in the illustration. Tighten screws to 80 Nm.



Fasten the hitch with screw plate to the Rockinger base plate using the four M10x45 socket head screws and four M10 collar nuts supplied. Tighten screws to 80 Nm.

Alternatively, the hitch can be attached directly to the hitch bracket with a screw plate. In this case, screws are to be tightened to 80 Nm as well.



At the lowest mounting hole of the hitch coupling, fasten the M10 ring nut with M10x30 collar screw and tighten to 50 Nm.



Make a cut-out on the underbody panelling in the rear area for the left towing point. As shown in the picture, this cut-out of 20 mm to 45 mm is to be made left-sided of the flap and to extend vertically up to the bend of the panelling.



Cut out the marked rectangle, clean and deburr the cut edges.



Reattach and secure the underbody panelling to the vehicle.



Pictures show fully assembled trailer hitch with and without ball head.

