



This installation guide applies to this part n°/description:

1412 0000 T5 + T6 – Protection plate „Desert“ for engine and gearbox

1414 0018 T5 + T6 – Protection plate „Desert“ for engine and gearbox

1412 0017 T5 + T6 – Protection plate „Widder“ for engine and gearbox



Important

To ensure proper function and optimal quality of our parts, their installation must be done in accordance with this installation guide in a professional workshop and according to the car manufacturer's specifications. Seikel GmbH and its employees shall not be responsible for damage and its consequences of any nature, which are caused due to non-observance or ignorance of these guidelines. Warranties shall be void for incorrectly performed installations.

In order to maintain driving safety and functioning of all moving and electrical parts, we recommend keeping the vehicle underbody free of heavy contaminations. This applies especially after every use in difficult terrain with e.g. mud, sand/gravel and water crossings.

Otherwise, it is a good idea to clean the underbody regularly, e.g. at the end of the winter half-year.

For this, existing protective plates of the vehicle underbody (e.g. engine, gearbox, tank & rear axle) should be dismantled beforehand.

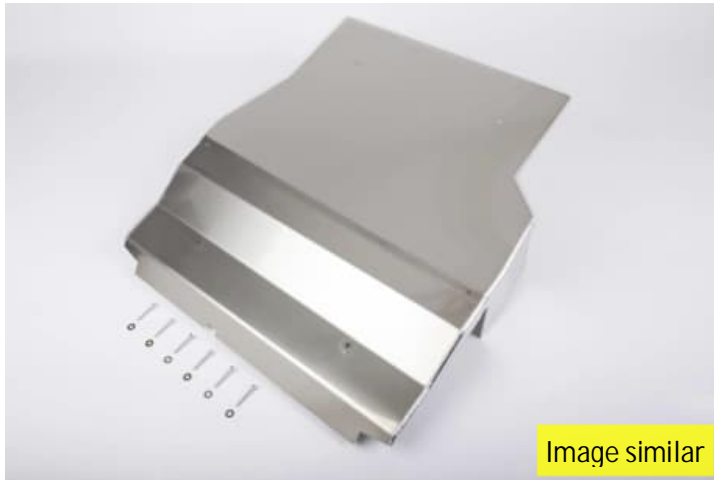
SEIKEL warranty certificate through product registration

When you purchase and install a SEIKEL product, you need a warranty certificate so that we can cover costs in the event of a warranty claim. You can download this warranty certificate from our website at www.seikel.de/downloads. Please fill out the form and return it to us by e-mail or fax. This is the only way to ensure that we can cover the costs in the event of a warranty or guarantee claim.

The certificate is valid for both - commercial and private customers.

Installation instructions

The exact working steps as well as tightening torques are to be taken from the instructions of the respective vehicle manufacturer. In case of deviations, our specifications of Seikel GmbH apply.

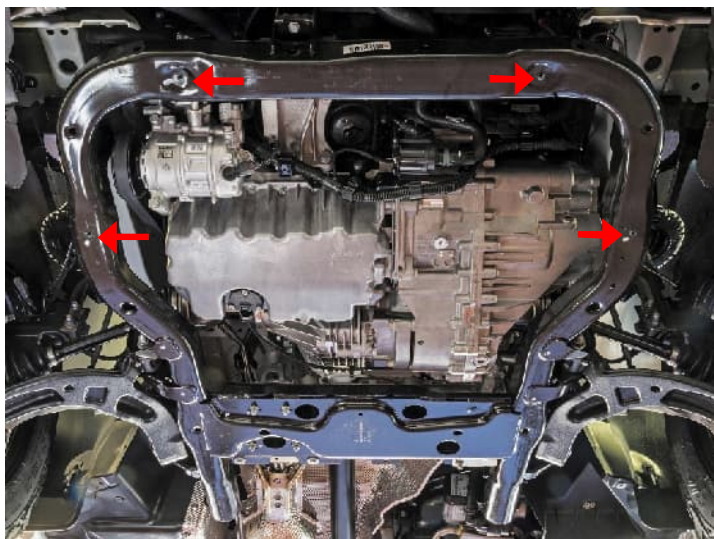


Parts list

- 1x aluminium engine protection
- 6x M8x50 hex head screw

Required tools

- Torque wrench
- 13 mm socket

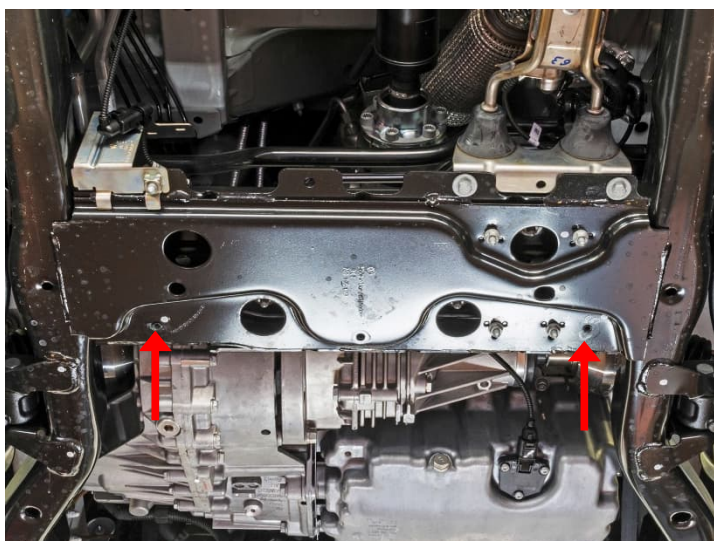


Best practise

Dismount original engine protection (if available).

Fix the aluminium protection plate on the four threaded inserts marked at the front

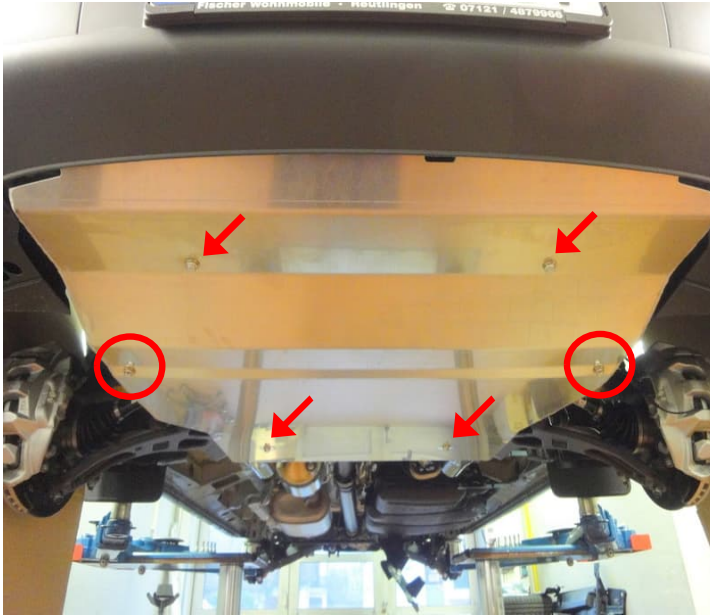
...



... and two threaded inserts at the rear.



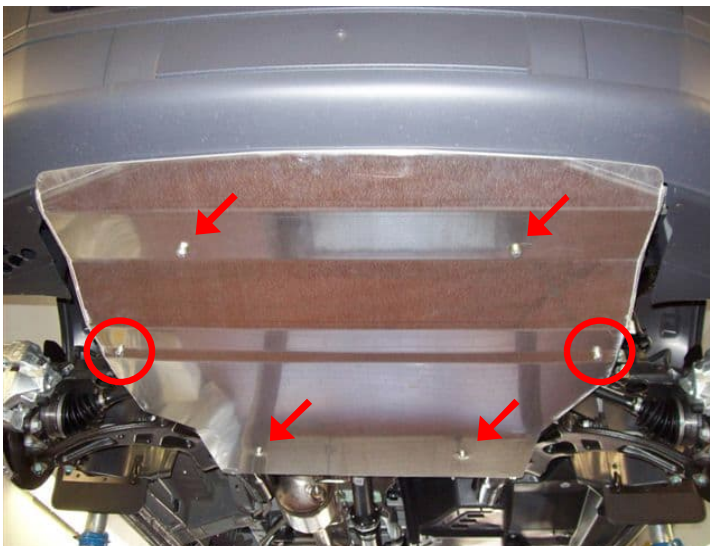
Product: 1412 0000 & 1414 0018 Underride protection engine „Desert“



Fix engine protection to the original threaded inserts on the assembly carrier using 6 M8x50 screws.

Important: First fix both the encircled screws with 30 Nm and then fix the remaining screws with 30 Nm.

Product: 1412 0017 Underride protection engine „Widder“



Fix engine protection to the original threaded inserts on the assembly carrier using 6 M8x50 screws.

Important: First fix both the encircled screws with 30 Nm and then fix the remaining screws with 30 Nm.