



| | | | |
|--|-----------|----------|---------|
| Volkswagen Transporter T5/T6 | | | |
| Skid plate for exhaust silencer | | | |
| Nummer: | 1412 0011 | Stand: | 10.2017 |
| Revision: | 04 | Sprache: | EN |

Installation guide 1412 0011

This installation guide applies to these part n°/descriptions:

1412 0011 T5 – Skid plate for exhaust silencer

1414 0000 T6 – Skid plate for exhaust silencer



| | | | |
|--|-----------|----------|---------|
| Volkswagen Transporter T5/T6 | | | |
| Skid plate for exhaust silencer | | | |
| Nummer: | 1412 0011 | Stand: | 10.2017 |
| Revision: | 04 | Sprache: | EN |

Important

To ensure proper function and optimal quality of our parts, their installation must be done in accordance with this installation guide and according to Volkswagen manufacture's specifications in a professional workshop. SEIKEL GmbH and its employees shall not be responsible for damage and its consequences of any nature, which are caused due to non-observance or ignorance of these guidelines. Warranties shall be void for incorrectly performed installations.

Installation guide

Please refer to the Volkswagen instructions for the exact working steps as well as the tightening torques. In case of deviation, our specifications shall be applicable.

NOTE!

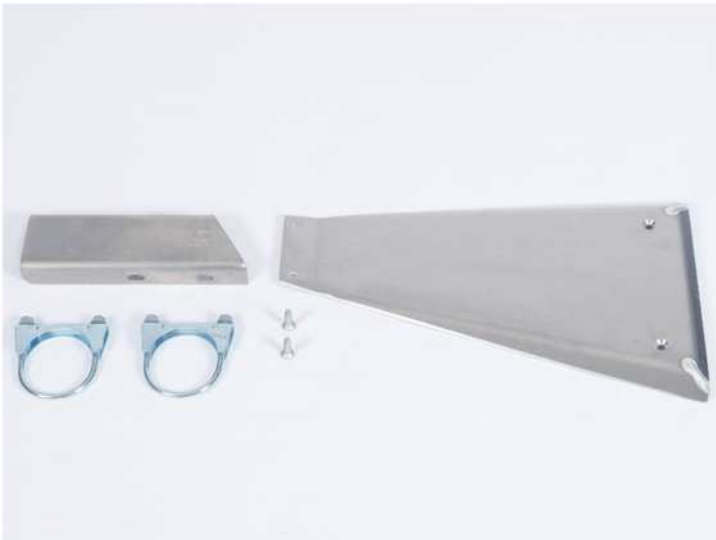
All the drill holes and breakthroughs must be deburred from both the sides. Metal swarfs are to be removed / vacuumed up immediately, and it has to be ensured that no swarfs fall into the hollow space in the body!

Apply paint (as per current valid VW repair manual "Paint", refer to ELSA):

1. Apply wash primer and allow it to dry in accordance with the item description. A hot-air dryer can be used, if necessary. We recommend: 1k Wash primer LLS MAX 106 M2.
2. Apply filler and allow it to dry in accordance with the item description. A hot-air dryer can be used, if necessary. We recommend 2K-HS filler LLS MAX 202 M2.
3. Apply base coat on visible areas based on the vehicle-specific varnish and allow base coat to dry in accordance with the item description. A hot-air dryer can be used, if necessary.
4. Protect all cutting edges, hollow spaces or drill holes additionally with anti-corrosion wax, if required using a small brush. We recommend transparent preservative wax AKR 321 M 15 4.

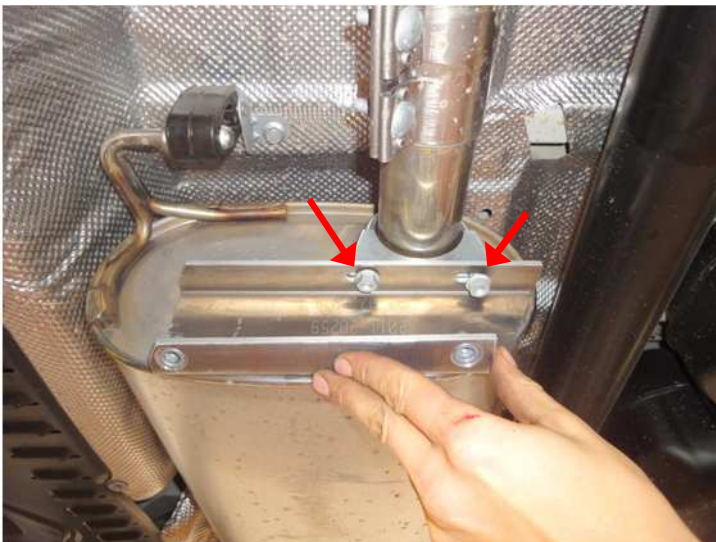


| Volkswagen Transporter T5/T6 | | | |
|---------------------------------|-----------|----------|---------|
| Skid plate for exhaust silencer | | | |
| Number: | 1412 0011 | Stand: | 10.2017 |
| Revision: | 04 | Sprache: | EN |



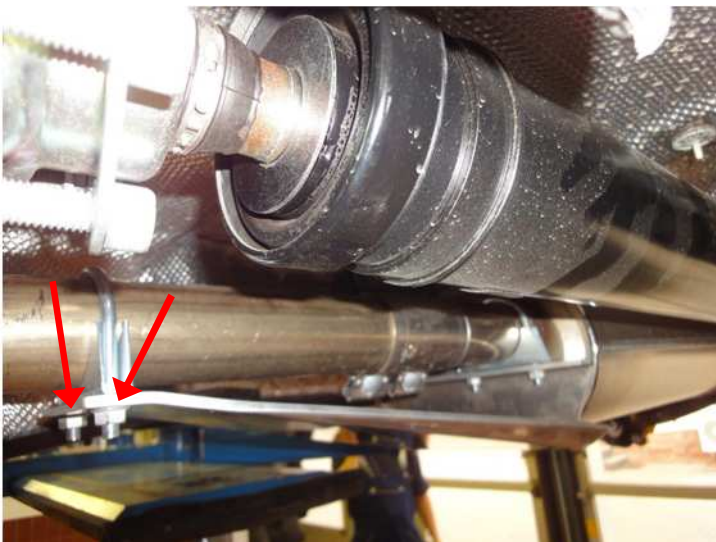
Parts list

- 1x skid plate for exhaust silencer
- 1x Bracket for skid plate
- 2x lens head screw
- 2x pipe clips
- 4x Hex collar nut, self-locking



Instructions

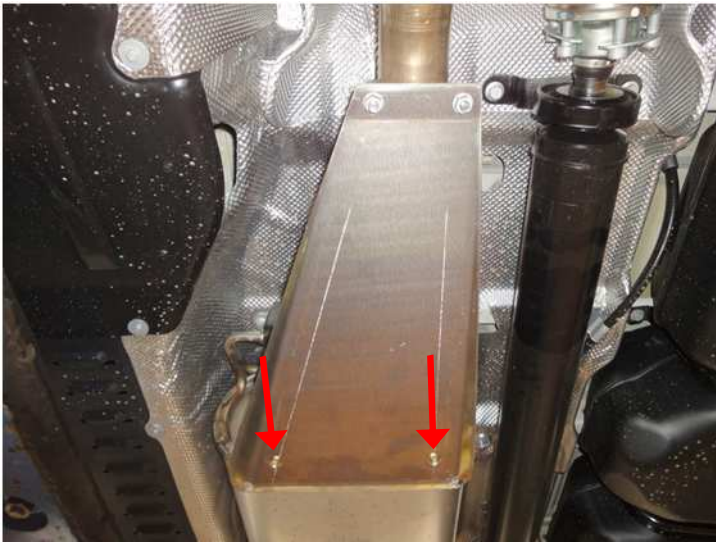
Mount U-clamp to exhaust silencer pipe using bracket for the skid plate and 2 M8 nuts, but do not tighten as yet.



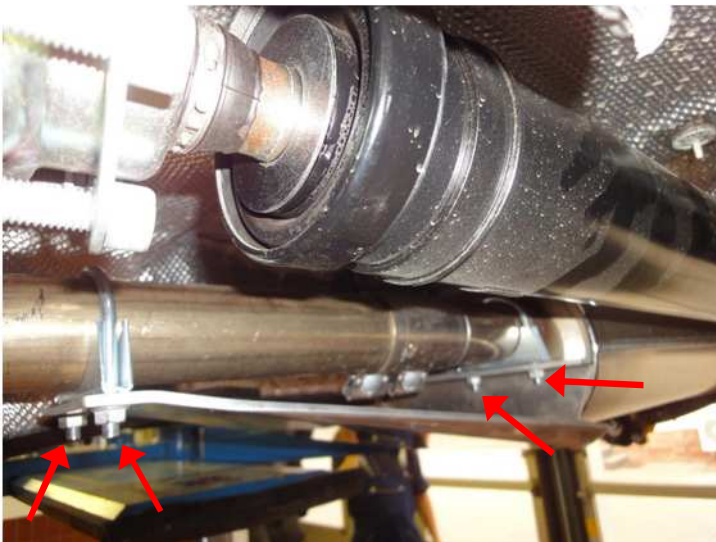
Fix protection plate with U-clamp at the front and 2 M8 nuts.



| Volkswagen Transporter T5/T6 | | | |
|---------------------------------|-----------|----------|---------|
| Skid plate for exhaust silencer | | | |
| Nummer: | 1412 0011 | Stand: | 10.2017 |
| Revision: | 04 | Sprache: | EN |



Fix protection plate with 2 M8 countersunk screws at the rear and align, tighten the countersunk screws with 15 Nm.



Likewise, tighten the 4 nuts of the U-clamps with 15 Nm.



Cut the protruding thread of the front U-clip by approx. 15 mm.