



Volkswagen Transporter T5/T6			
Protection plate tank			
Number:	1412 0018	Stand:	05.2020
Revision:	05	Sprache:	EN

Installation guide 1412 0018

This installation guide applies to this part n°/description:

- 1412 0018 T5 – Protection plate tank
for vehicles with short and long wheel base

- 1414 0001 T5 + T6 – Protection plate tank
for vehicles with short and long wheel base



Volkswagen Transporter T5/T6			
Protection plate tank			
Number:	1412 0018	Stand:	05.2020
Revision:	05	Sprache:	EN

Important

To ensure proper function and optimal quality of our parts, their installation must be done in accordance with this installation guide and according to Volkswagen manufacture's specifications in a professional workshop. SEIKEL GmbH and its employees shall not be responsible for damage and its consequences of any nature, which are caused due to non-observance or ignorance of these guidelines. Warranties shall be void for incorrectly performed installations.

Installation guide

Please refer to the Volkswagen instructions for the exact working steps as well as the tightening torques. In case of deviation, our specifications shall be applicable.

NOTE!

All the drill holes and breakthroughs must be deburred from both the sides. Metal swarfs are to be removed / vacuumed up immediately, and it has to be ensured that no swarfs fall into the hollow space in the body!

Apply paint (as per current valid VW repair manual "Paint", refer to ELSA):

1. Apply wash primer and allow it to dry in accordance with the item description. A hot-air dryer can be used, if necessary. We recommend: 1k Wash primer LLS MAX 106 M2.
2. Apply filler and allow it to dry in accordance with the item description. A hot-air dryer can be used, if necessary. We recommend 2K-HS filler LLS MAX 202 M2.
3. Apply base coat on visible areas based on the vehicle-specific varnish and allow base coat to dry in accordance with the item description. A hot-air dryer can be used, if necessary.
4. Protect all cutting edges, hollow spaces or drill holes additionally with anti-corrosion wax, if required using a small brush. We recommend transparent preservative wax AKR 321 M 15 4.



Parts list

- 1x aluminium tank protection
- 1x fastening rail for tank protection
- 1x bracket on prop shaft front
- 1x bracket on prop shaft rear
- 1x bracket on traverse front
- 6x M8x20 hex screw
- 8x M8x30 hex screw
- 5x M6x25 hex screw
- 4x M6 nut, self-locking
- 1x M6 rivet nut



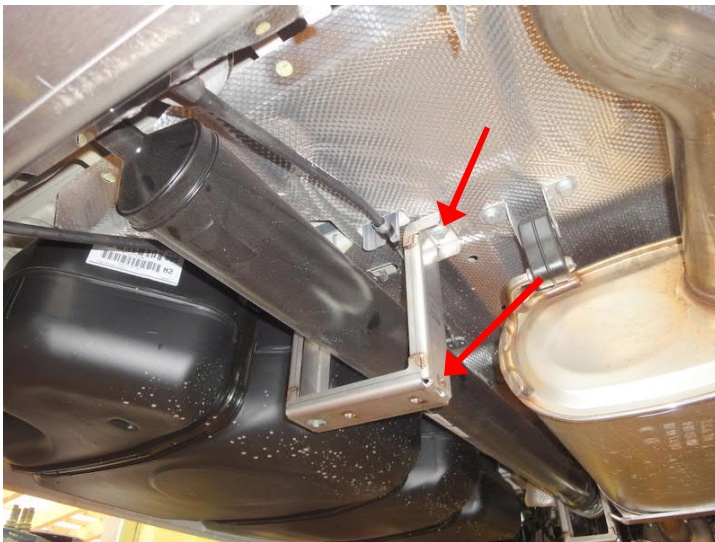
Recommended special tools

- Rivet nut pliers



Instructions

Dismount both underbody plastic claddings on the left.



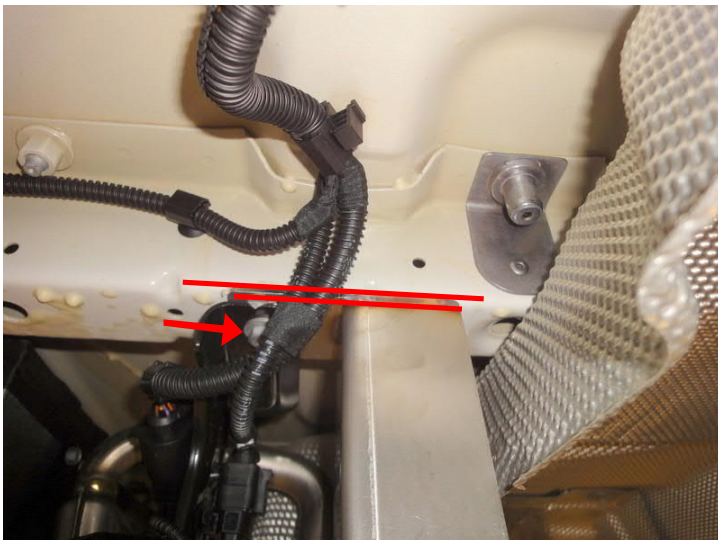
Assemble rear bracket with threaded hole on the right, as shown in the image. Use two new M8x30 screws provided in the delivery and tighten with 35 Nm.



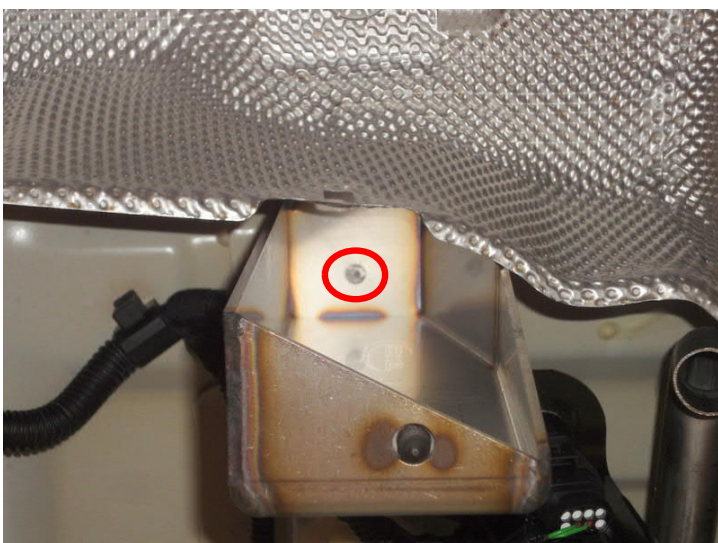
Assemble front bracket with threaded hole on the right, as shown in the image. Use two new M8x30 screws provided in the delivery and tighten with 35 Nm.



Remove existing set screw on traverse at front with angle grinder.



Fix bracket for traverse on existing screw and align parallel to bodywork reinforcement and tighten lightly.



Indicate the drilling point through drilling.



Remove the bracket again and drill a 9.5 mm hole at the indicated point.



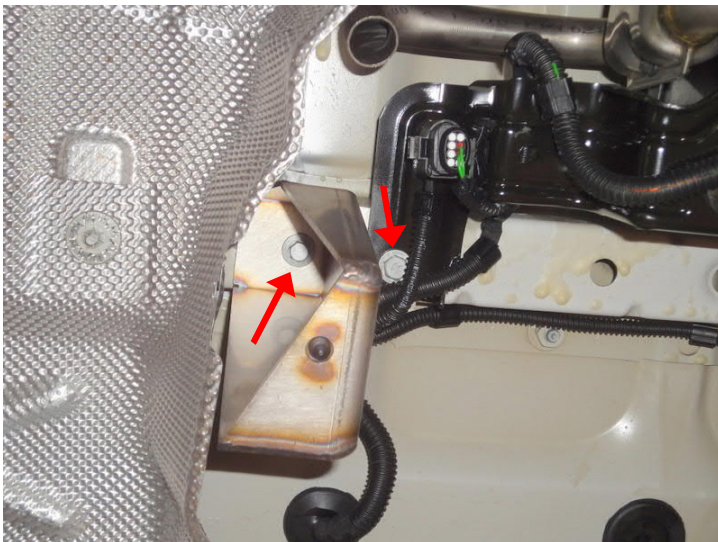
Fix hex collar screw M6 with hex rivet nut M6 and carefully hammer in the existing drill hole in order to expand it.



Remove rivet nut again, deburr drill hole and protect stress marks as well as traverse against rust.



Insert rivet nut M6 with rivet pliers.



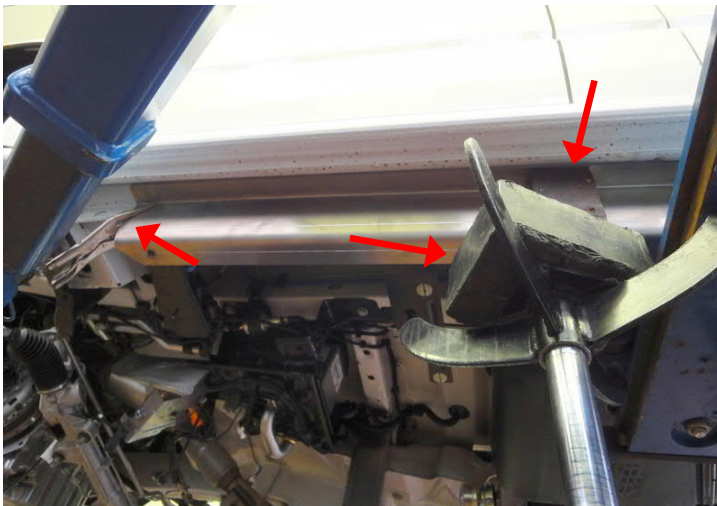
Fix bracket with M6x25 screws and tighten with 10 Nm. Tighten the original screw M8 with 30 Nm.



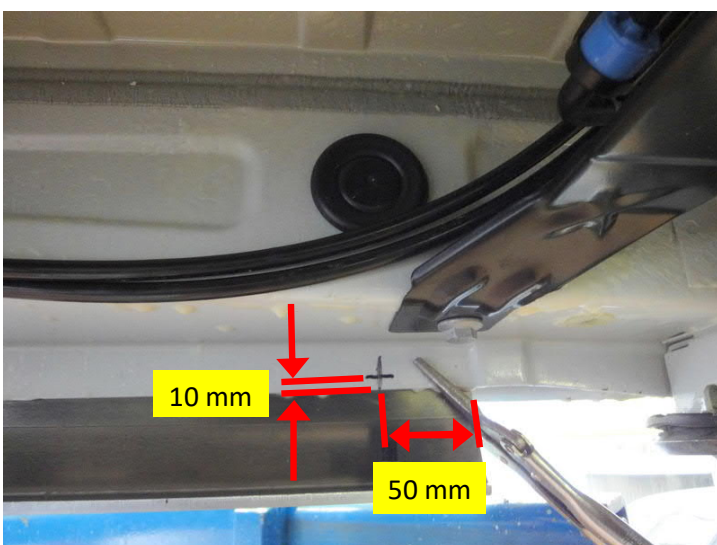
Remove all the closing plugs of the vehicle body.



Mount fastening rail and centre with its recess on the middle of the three car body reinforcements. Finally, fix on the side skirt using a mole wrench.



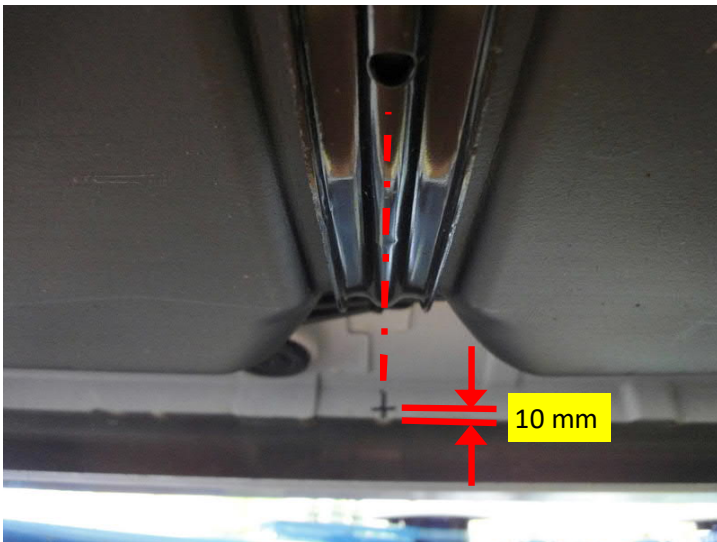
Firmly press the fastening rail on the car body before the drilling with the help of a wooden block and a gearbox lever.



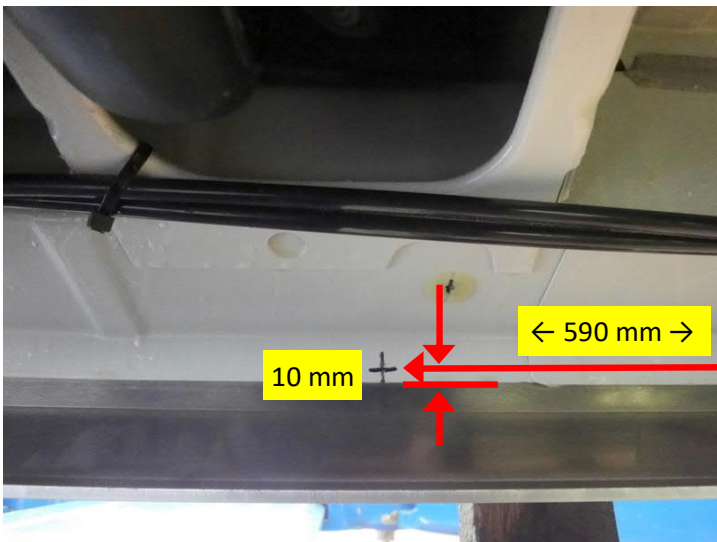
Mark 50 mm from front and 10 mm from below.



Mark 50 mm from rear and 10 mm from below.



Mark originating from tank bar centre.



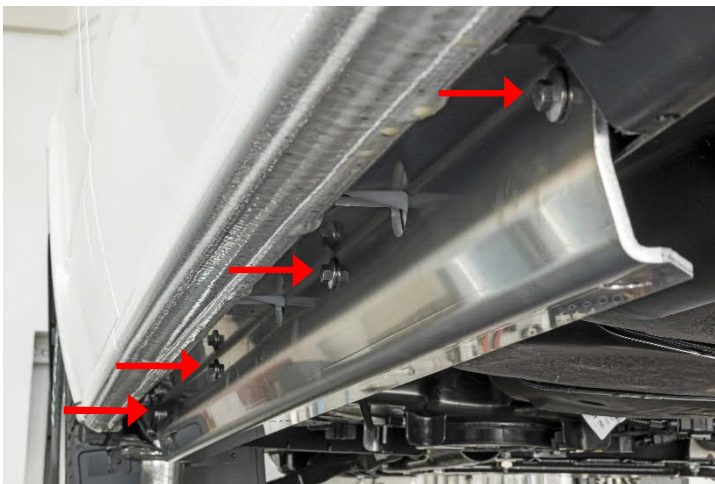
Mark 590 mm originating from front.



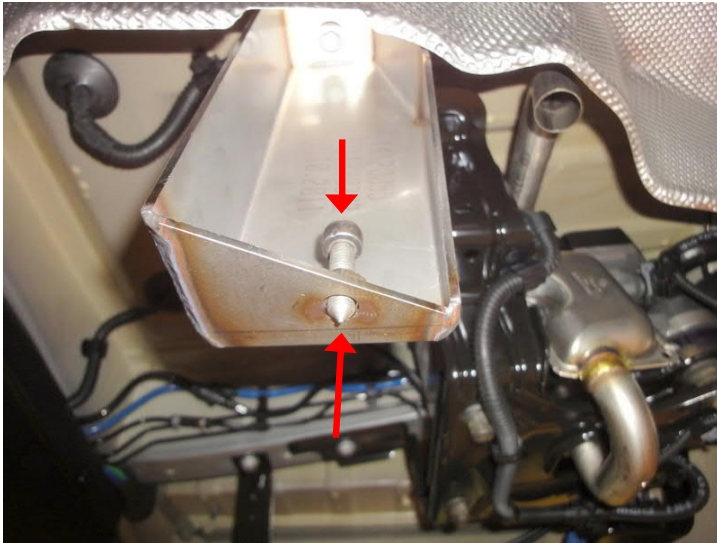
Drill all the points with a 7 mm drill through the side skirt and through the aluminium fastening rail.



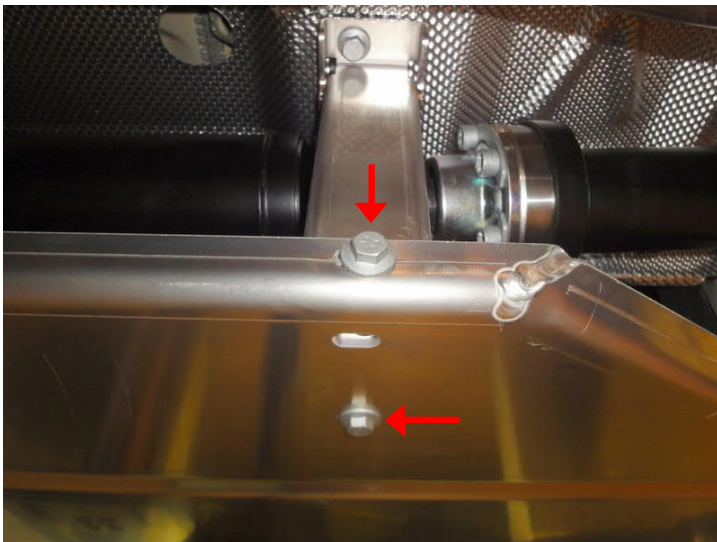
Deburr all the drill holes and treat with anti-corrosive protection.



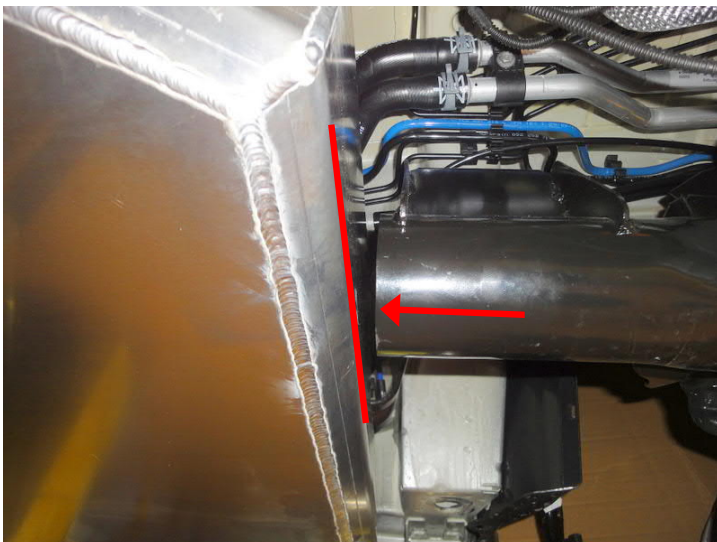
Tighten the fastening rail with 4 screws M6x25, flat washers and self-locking nuts with 10 Nm.



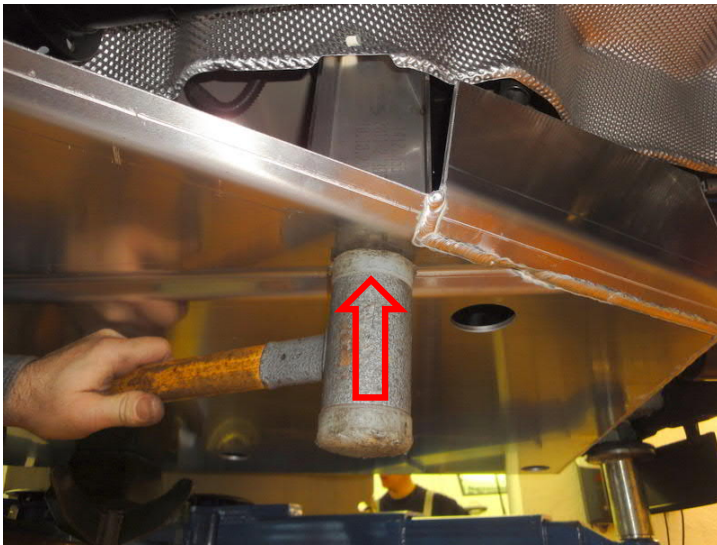
Bring 4x set screw M8 with hexagon socket in position.



Fix tank protection with 4 screws M8x20 to both the brackets below the prop shaft.



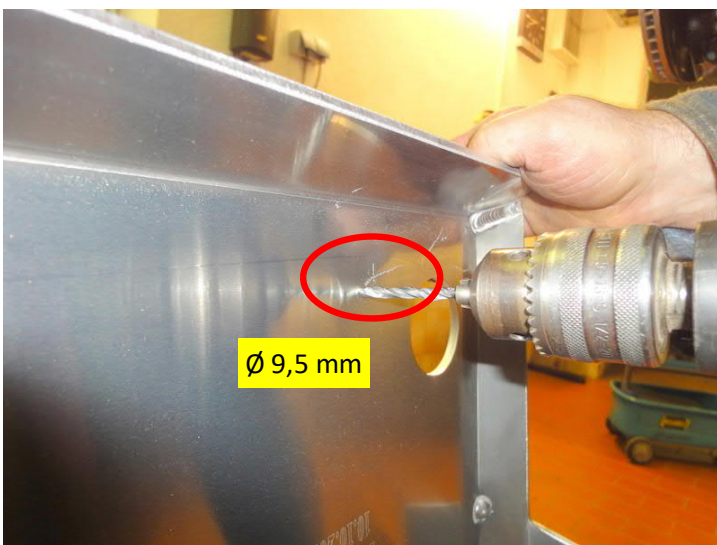
Push the tank protection back from the assembly carrier as much as possible.



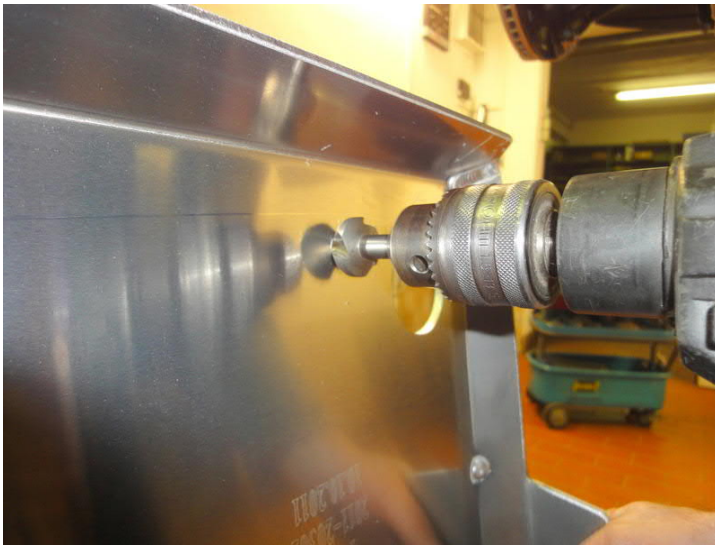
Using a soft-head hammer
make 4 marks at the 4 lifting points
from underneath the tank protection.



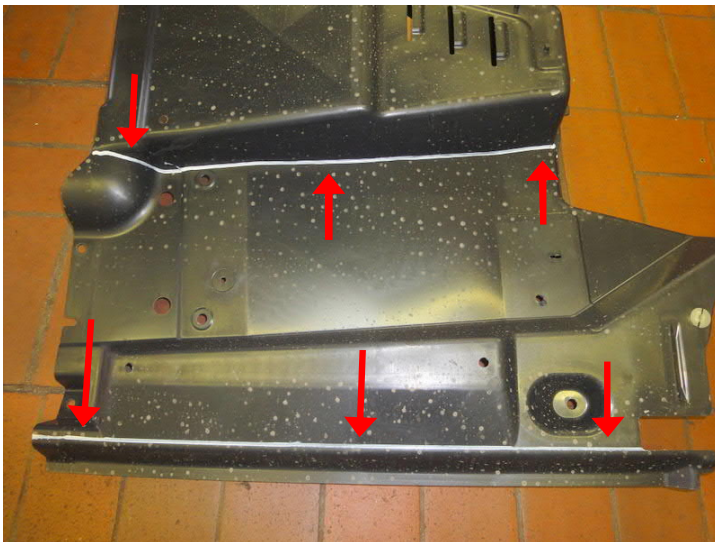
Dismount tank protection again.
The 4 marks (punch marks) should now be
visible in the tank protection.



Drill the marks with 9.5 mm drill.



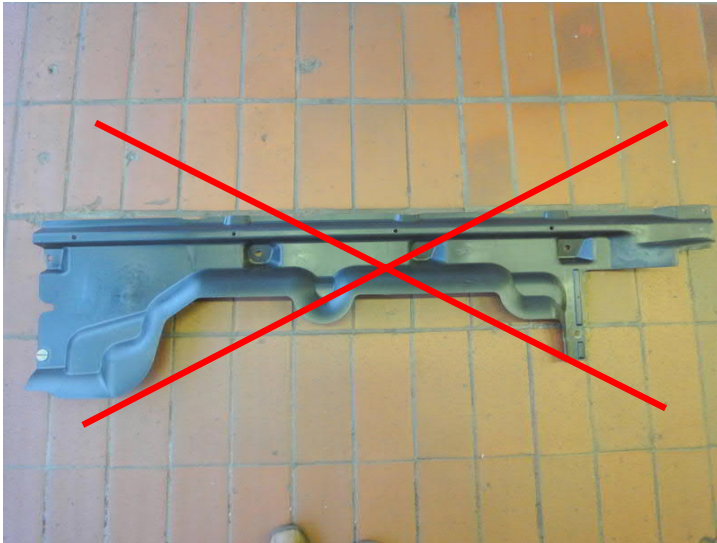
Deburr all drill holes.



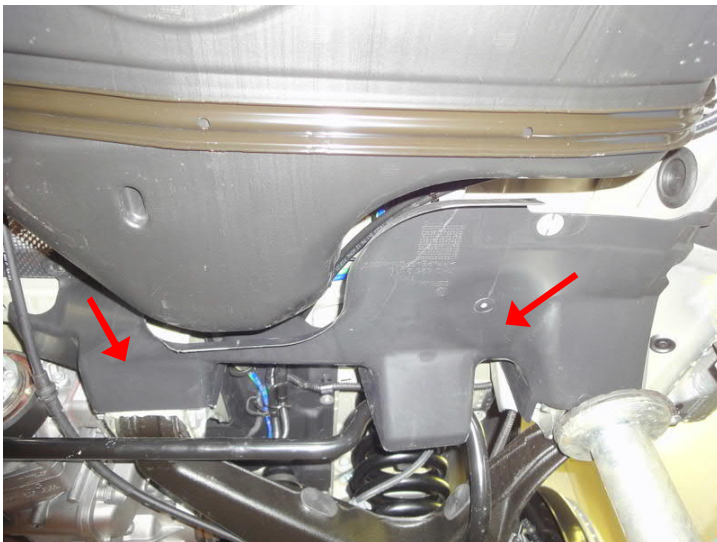
Mark plastic cladding as shown in the image and cut it.



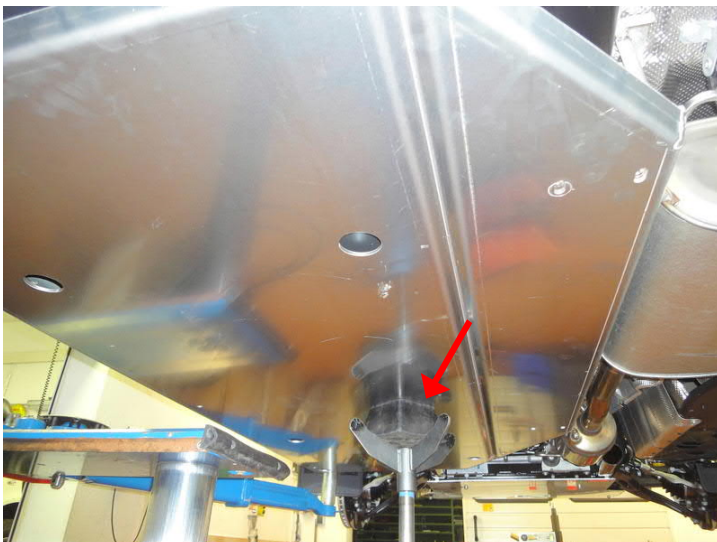
Mount the remaining centre body of the plastic cladding.



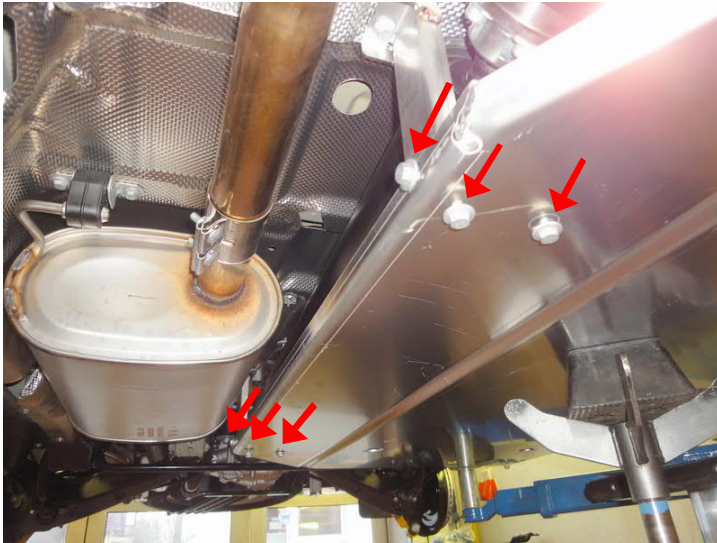
This rear cladding is no longer required.



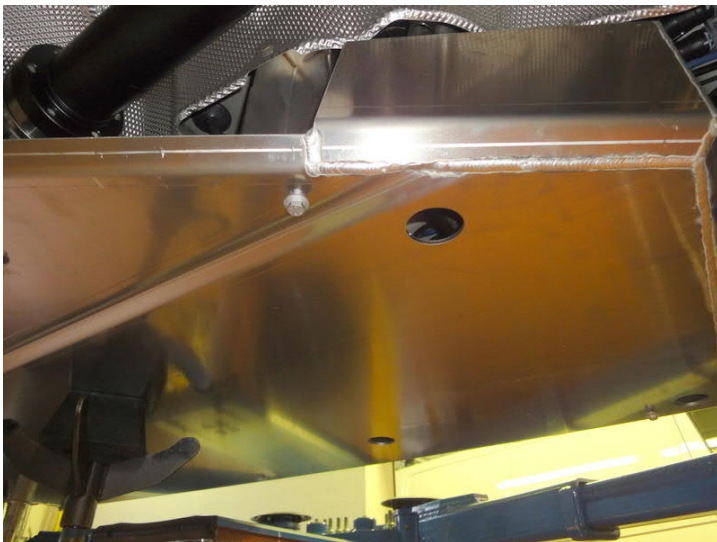
Re-mount the cladding on rear centre.



Unscrew the 4 set screws from the brackets and bring tank protection in position with the help of a gearbox lever.



Fix the tank protection with 6 M8x20 screws on the middle bracket and tighten with 30 Nm.



On the remaining 4 fixing points, fix the tank protection with 4 M8x30 screws and tighten with 30 Nm.



Note in case of vehicles with 2.0 TSI motorisation

Manually rework the protection plate of the fuel tank with garage tools in the area of catalytic converter.



Volkswagen Transporter T5/T6			
Protection plate tank			
Number:	1412 0018	Stand:	05.2020
Revision:	05	Sprache:	EN

