



Volkswagen Transporter T5-T6.1			
Rockslider			
Nummer:	1414 0020	Stand:	02.2023
Revision:	03	Sprache:	EN

Installation guide 1414 0020

This installation guide applies to this part n°/descriptions:

- 1414 0020 T5-T6 – Rockslider for short wheelbase with protective plate tank
- 1414 0021 T5-T6 – Rockslider for short wheelbase without protective plate tank
- 1414 0022 T5-T6 – Rockslider for long wheelbase with protective plate tank
- 1414 0023 T5-T6 – Rockslider for long wheelbase without protective plate tank

- 1415 0011 T6.1 – Rockslider for short wheelbase with protective plate tank
- 1415 0012 T6.1 – Rockslider for short wheelbase without protective plate tank
- 1415 0013 T6.1 – Rockslider for long wheelbase with protective plate tank
- 1415 0014 T6.1 – Rockslider for long wheelbase without protective plate tank



Volkswagen Transporter T5-T6.1			
Rockslider			
Nummer:	1414 0020	Stand:	02.2023
Revision:	03	Sprache:	EN

Important

To ensure proper function and optimal quality of our parts, their installation must be done in accordance with this installation guide and according to Volkswagen manufacture's specifications in a professional workshop. SEIKEL GmbH and its employees shall not be responsible for damage and its consequences of any nature, which are caused due to non-observance or ignorance of these guidelines. Warranties shall be void for incorrectly performed installations.

Installation guide

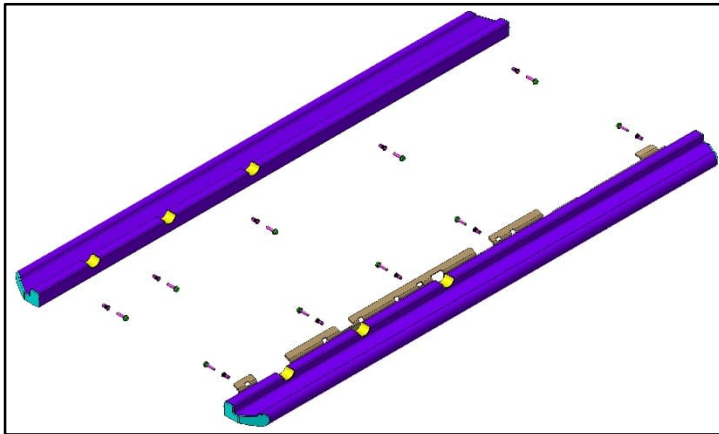
Please refer to the Volkswagen instructions for the exact working steps as well as the tightening torques. In case of deviation, our specifications shall be applicable.

NOTE!

All the drill holes and breakthroughs must be deburred from both the sides. Metal swarfs are to be removed / vacuumed up immediately, and it has to be ensured that no swarfs fall into the hollow space in the body!

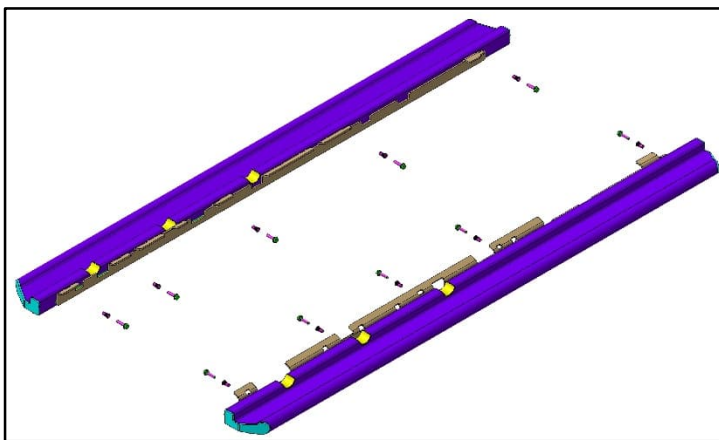
Apply paint (as per current valid Volkswagen repair manual "Paint", refer to ELSA):

1. Apply wash primer and allow it to dry in accordance with the item description. A hot-air dryer can be used, if necessary. We recommend: 1k Wash primer LLS MAX 106 M2.
2. Apply filler and allow it to dry in accordance with the item description. A hot-air dryer can be used, if necessary. We recommend 2K-HS filler LLS MAX 202 M2.
3. Apply base coat on visible areas based on the vehicle-specific varnish and allow base coat to dry in accordance with the item description. A hot-air dryer can be used, if necessary.
4. Protect all cutting edges, hollow spaces or drill holes additionally with anti-corrosion wax, if required using a small brush. We recommend transparent preservative wax AKR 321 M 15 4.



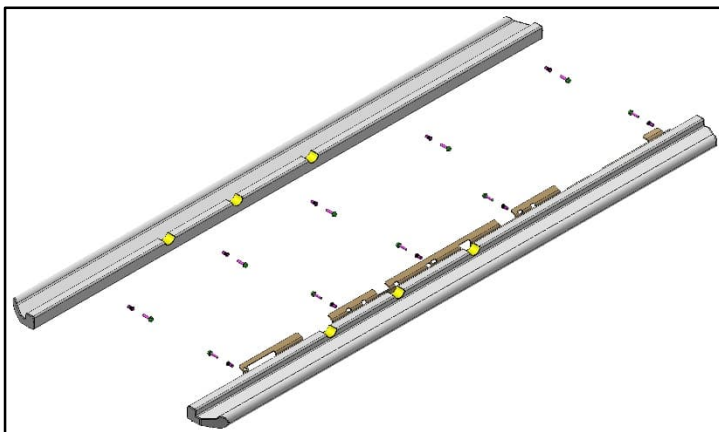
Parts list 1414 0020 T5 - T6
(short wheelbase with protective plate tank)

- 1x Rockslider right
- 1x Rockslider left
- 1x terminal strip right
- 10x M8x35 hexagon screws
- 10x M8 riveting nuts



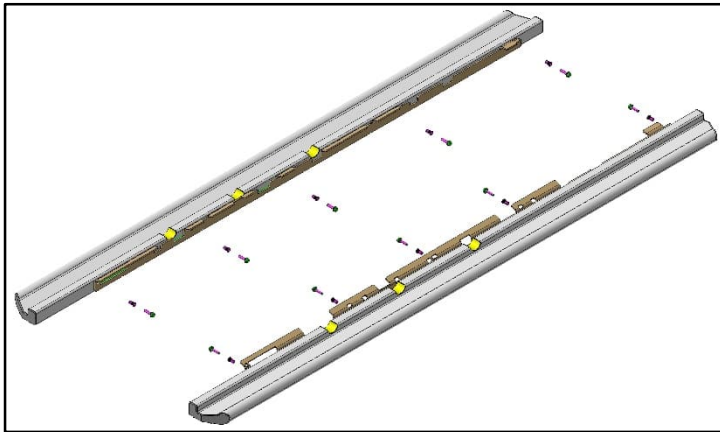
Parts list 1414 0021 T5 - T6
(short wheelbase without protective plate tank)

- 1x Rockslider right
- 1x Rockslider left
- 1x terminal strip right
- 1x terminal strip left
- 10x M8x35 hexagon screws
- 10x M8 riveting nuts



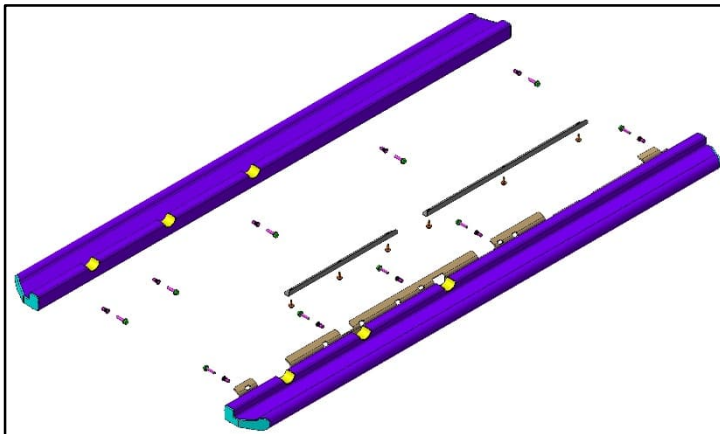
Parts list 1414 0022 T5 - T6
(long wheelbase with protective plate tank)

- 1x Rockslider right
- 1x Rockslider left
- 1x terminal strip right
- 10x M8x35 hexagon screws
- 10x M8 riveting nuts



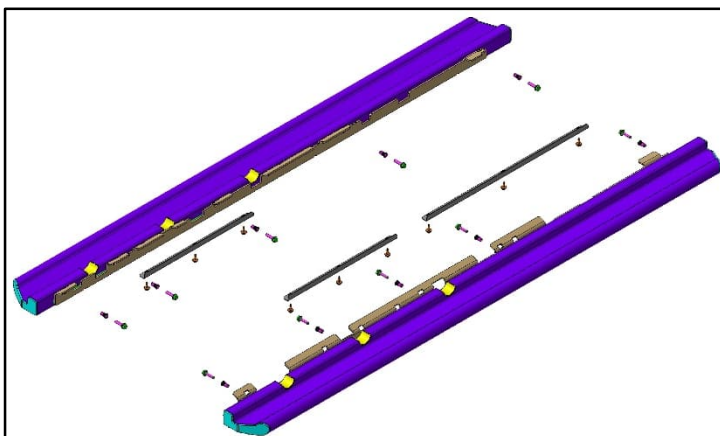
Parts list 1414 0023 T5 - T6
(long wheelbase without protective plate tank)

- 1x Rockslider right
- 1x Rockslider left
- 1x terminal strip right
- 1x terminal strip left
- 10x M8x35 hexagon screws
- 10x M8 riveting nuts



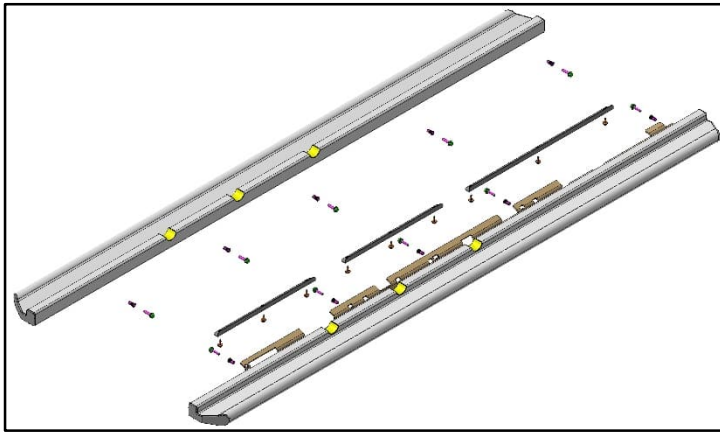
Parts list 1415 0011 T6.1
(short wheelbase with protective plate tank)

- 1x Rockslider right
- 1x Rockslider left
- 1x terminal strip right
- 10x M8x35 hexagon screws
- 10x M8 riveting nuts
- 1x reinforcing bracket short
- 1x reinforcing bracket long
- 6x M6x20 hexagon screws



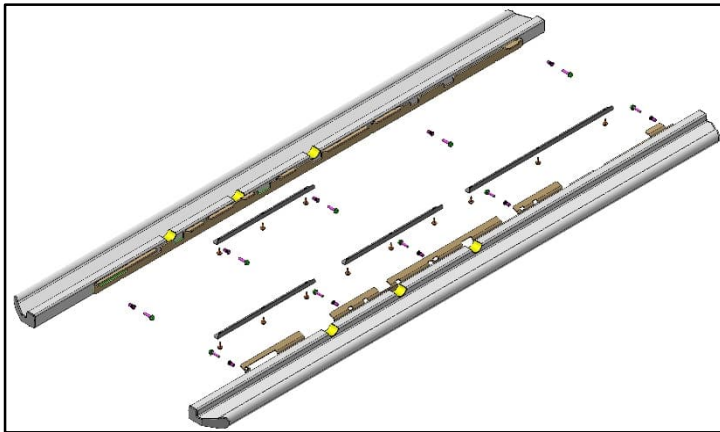
Parts list 1415 0012 T6.1
(short wheelbase without protective plate tank)

- 1x Rockslider right
- 1x Rockslider left
- 1x terminal strip right
- 1x terminal strip left
- 10x M8x35 hexagon screws
- 10x M8 riveting nuts
- 2x reinforcing bracket short
- 1x reinforcing bracket long
- 9x M6x20 hexagon screws



Parts list 1415 0013 T6.1
(long wheelbase with protective plate tank)

- 1x Rockslider right
- 1x Rockslider left
- 1x terminal strip right
- 10x M8x35 hexagon screws
- 10x M8 riveting nuts
- 2x reinforcing bracket short
- 1x reinforcing bracket long
- 9x M6x20 hexagon screws



Parts list 1415 0014 T6.1
(long wheelbase without protective plate tank)

- 1x Rockslider right
- 1x Rockslider left
- 1x terminal strip right
- 1x terminal strip left
- 10x M8x35 hexagon screws
- 10x M8 riveting nuts
- 3x reinforcing bracket short
- 1x reinforcing bracket long
- 12x M6x20 hexagon screws



Recommended special tool

- riving nut pliers
- car body sealant



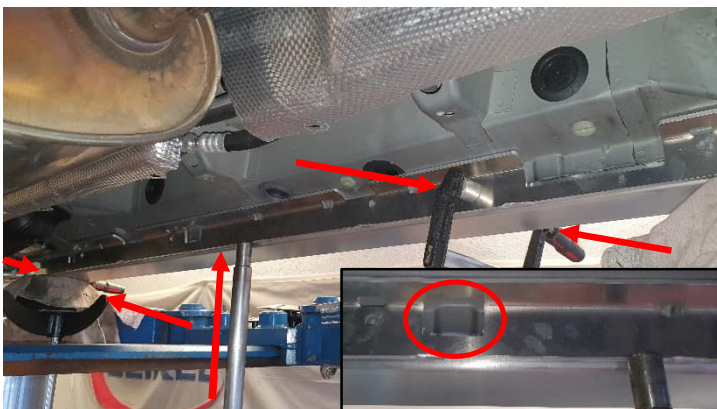
Instructions

Remove all plastic coverings on the underbody between the axles and all sealing plugs from the vehicle body in the right and left sill.

Installation on the right-hand side is described below; installation on the left-hand side is carried out in the same way.



Place the right Rockslider from below on the right sill and centre the recesses on the 3 body reinforcements. Then press the Rockslider onto the body with a transmission jack.



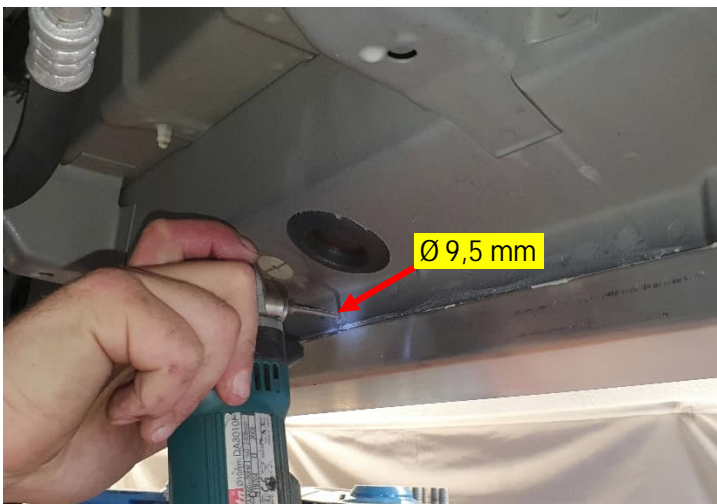
Place the right terminal strip from the inside against the seam of the sill and centre the recesses in the terminal strip using the body reinforcements. To fix the terminal strip, press it from below against the sill with a transmission jack and press it against the seam of the sill with two screw clamps together with the Rockslider.



On vehicles with an additional reinforcement plate at the rear of the inner sill, the clamping strip must be reworked accordingly using workshop materials, as shown in the picture.



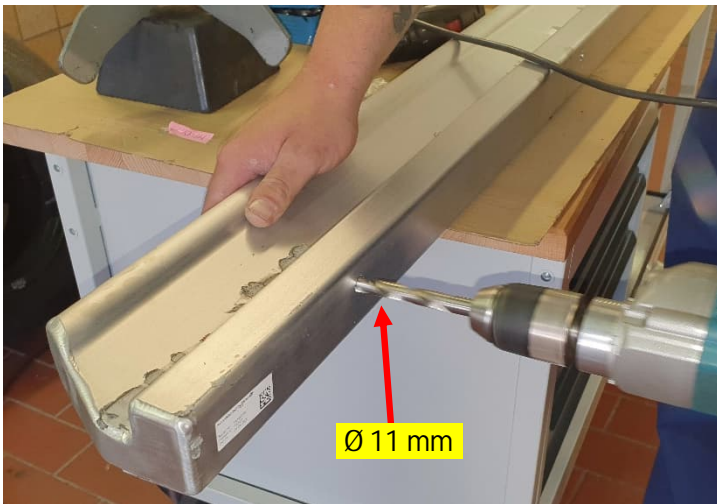
Apply a drill mark on the body seam through each of the 5 holes in the terminal strip.
Then remove the terminal strip from the vehicle again.



Drill all 5 marks with a 9.5 mm drill through the seam on the sill and through the Rockslider.
Then remove the Rockslider from the vehicle.



Deburr all holes on the sill and treat them with a rust protection.



Widen all pre-drilled holes in the Rockslider to 11 mm and deburr them.



Insert an M8 riveting nut into all holes of the Rockslider.

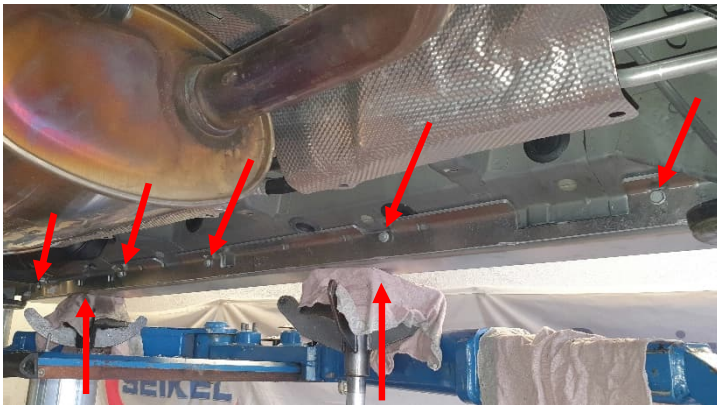


Volkswagen Transporter T5-T6.1			
Rockslider			
Nummer:	1414 0020	Stand:	02.2023
Revision:	03	Sprache:	EN



Before installing the Rockslider, a bead of car body sealant must be applied over the entire length of the top of the Rockslider profile, as shown in the picture.

We recommend "Kleb & Dicht" from Würth (963258741).



Using two transmission jacks, press the prepared Rockslider back onto the sill from below and fasten the terminal strip to the Rockslider from the inside of the sill using the M8x35 mm hexagon screws provided.

Tighten all 5 screws with 15 Nm.



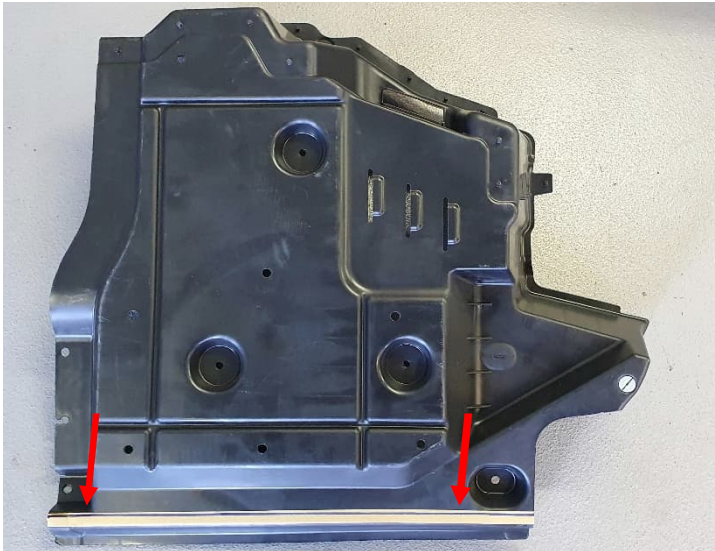
If necessary, remove the sealant in excess from the ends of the Rockslider.

ATTENTION: Note for 1414 0020, 1414 0022, 1415 0011 and 1415 0013:

If the Rockslider is installed on the left-hand side (in the direction of travel) together with a SEIKEL tank protection plate the terminal strip is replaced by the fixing strip of the protective plate tank is replaced.

For vehicles with a short wheelbase, the hole for the 5th fastening screw must be made 210 mm behind the last hole of the fastening bar. behind the last hole of the fastening strip.

For long wheelbase vehicles, the distance of the 5th hole is 438 mm behind the last hole of the fastening strip.

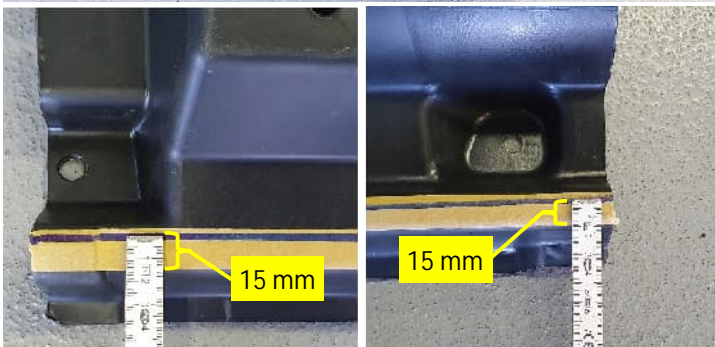


Trimming of the plastic claddings on T5 and T6:

(T6.1 follows from page 15)

Mark the plastic cladding on the front left side as shown in the pictures, cut it to size and clean and deburr the cut edge.

Then mount the cladding again on the vehicle.

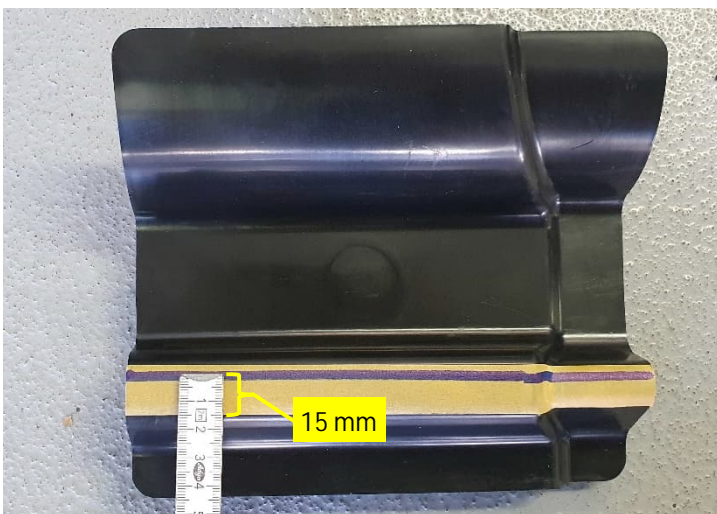
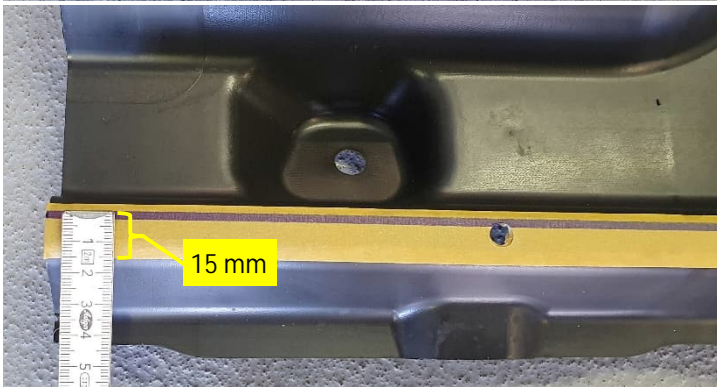


Mark the cover of the jacking point on the front left side as shown in the picture, cut it to size and clean and deburr the cut edge.

Then mount the cladding again on the vehicle.



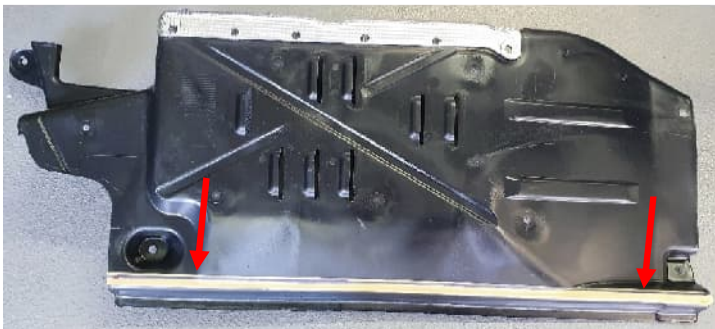
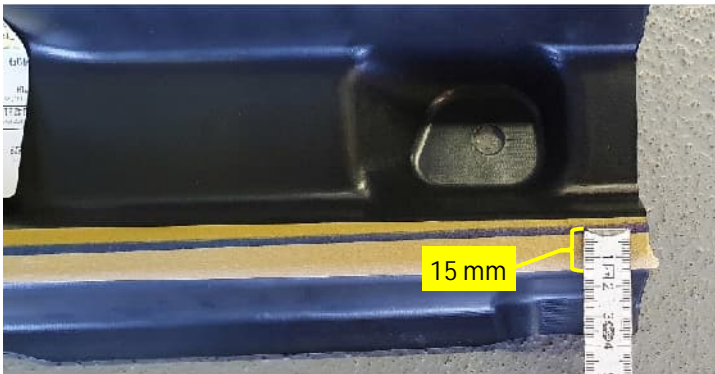
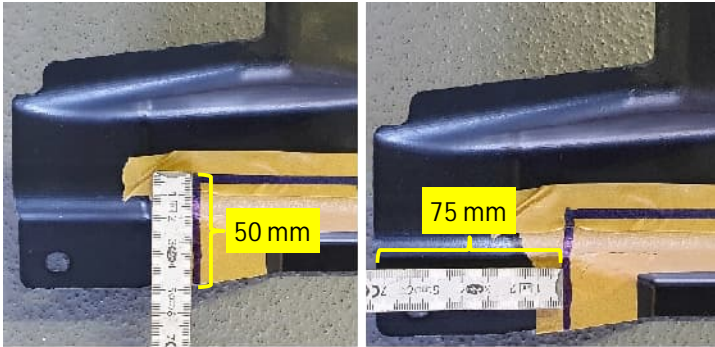
Mark the plastic cladding in the middle on the left as shown in the pictures, cut it to size and clean and deburr the cut edge.
Then mount the cladding again on the vehicle



Mark the plastic cladding in the middle on the left as shown in the pictures, cut it to size and clean and deburr the cut edge.
Then mount the cladding again on the vehicle.

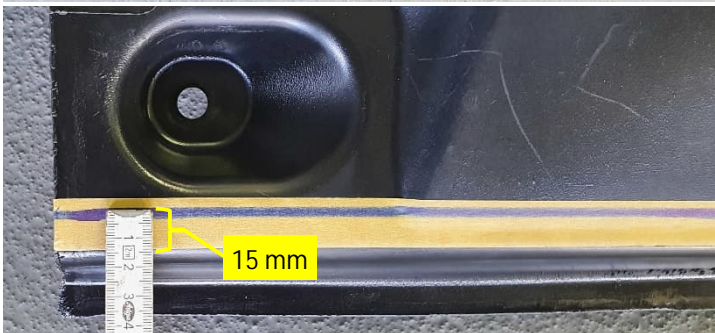


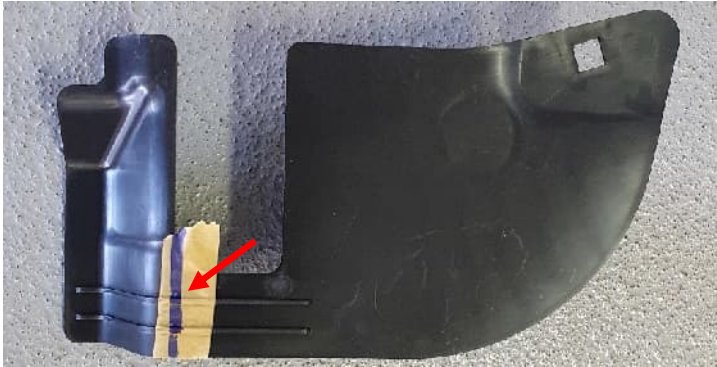
Mark the plastic cladding in the rear on the left as shown in the pictures, cut it to size and clean and deburr the cut edge. Then mount the cladding again on the vehicle.



Mark the plastic cladding on the front right side as shown in the pictures, cut it to size and clean and deburr the cut edge.

Then mount the cladding again on the vehicle.





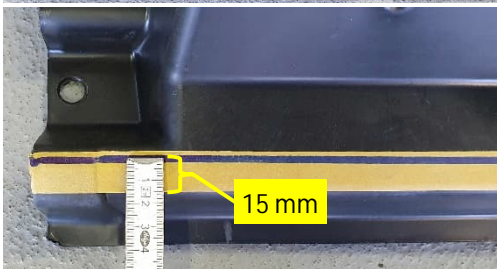
Mark the cover of the jacking point on the front right side as shown in the picture, cut it to size and clean and deburr the cut edge.

Then mount the cladding again on the vehicle.



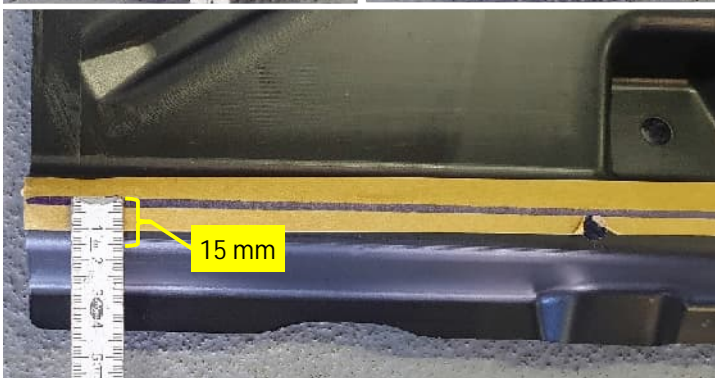
Mark the plastic cladding in the middle on the right as shown in the pictures, cut it to size and clean and deburr the cut edge.

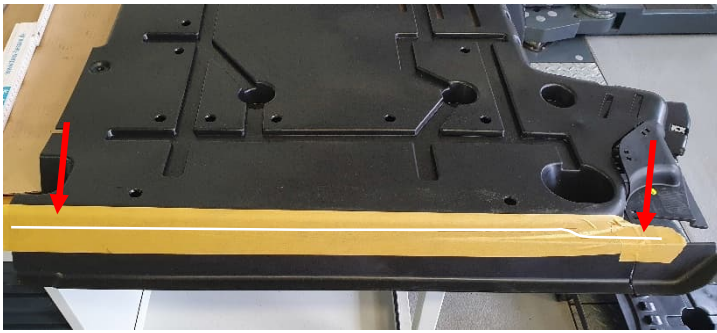
Then mount the cladding again on the vehicle.



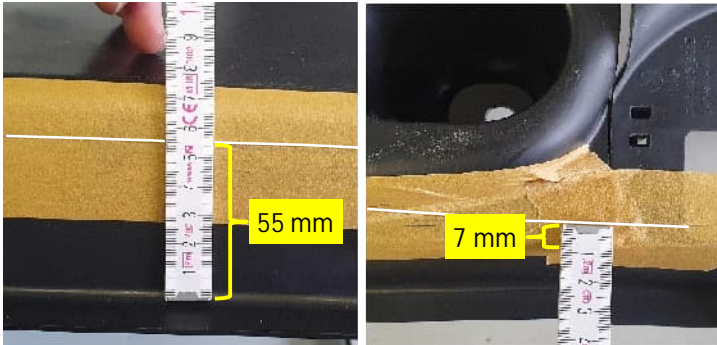


Mark the plastic cladding in the rear on the right as shown in the pictures, cut it to size and clean and deburr the cut edge. Then mount the cladding again on the vehicle.





Trimming of the plastic cladding T6.1:
If the SEIKEL protective plate tank 1414 0003 is or will also be installed on the vehicle, then the trimming from the installation guide 1414 0003 must also be taken into account for the plastic claddings on the left-hand side.



In this case, several steps of the work described below are omitted:

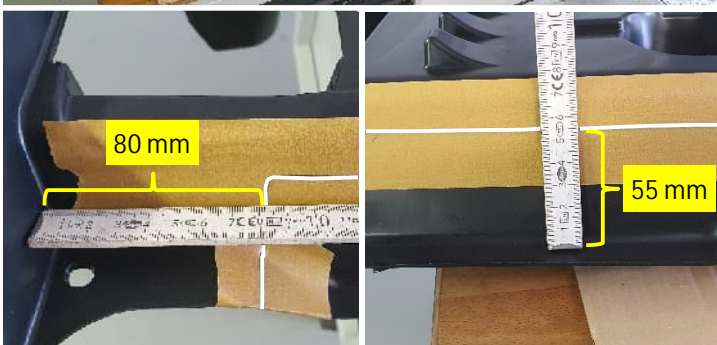
Mark and cut the plastic cladding on the front left side as shown in the pictures.



After trimming, clean and deburr the cut edge. Then mount the cladding again on the vehicle.



Mark and cut the plastic cladding in the rear left side as shown in the pictures.

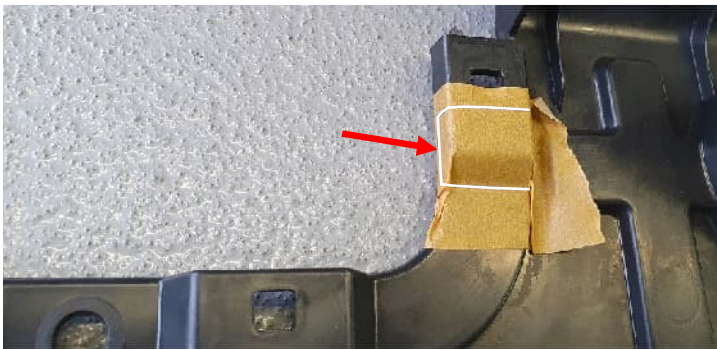




After trimming, clean and deburr the cut edge.



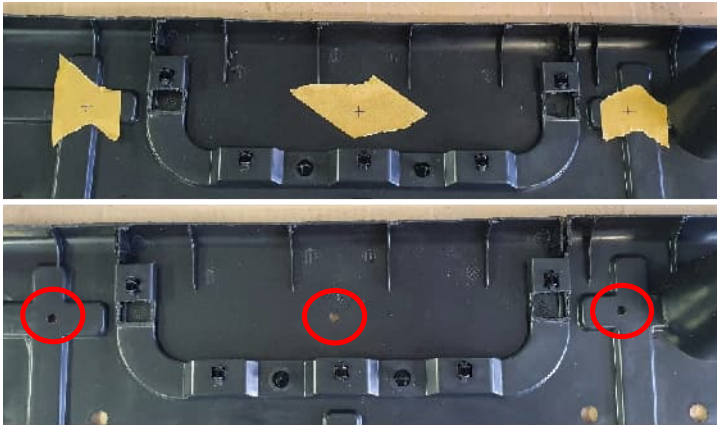
Remove the cover from the cladding at the rear left and place the supplied reinforcing bracket from the inside, as shown in the picture on the left. Centre the reinforcing bracket on the reinforcements in the plastic cladding. Then move the reinforcing bracket to the cladding.



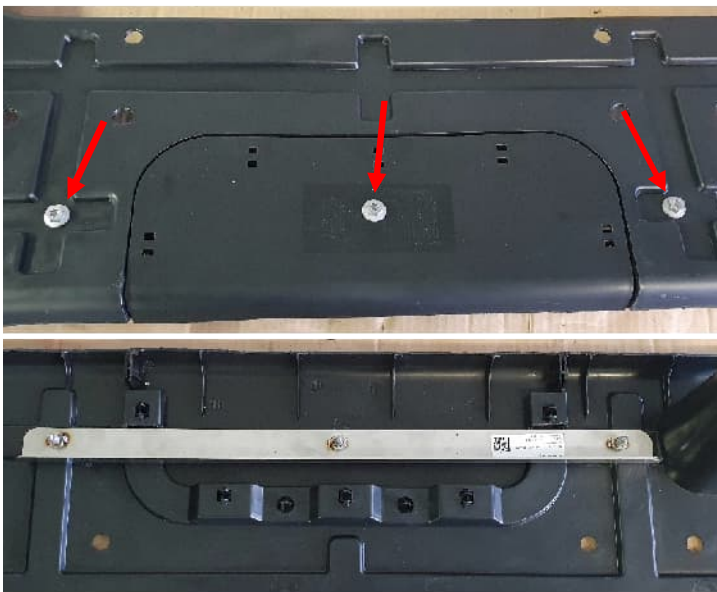
Cut out the two marked areas and clean and deburr the cut edges.



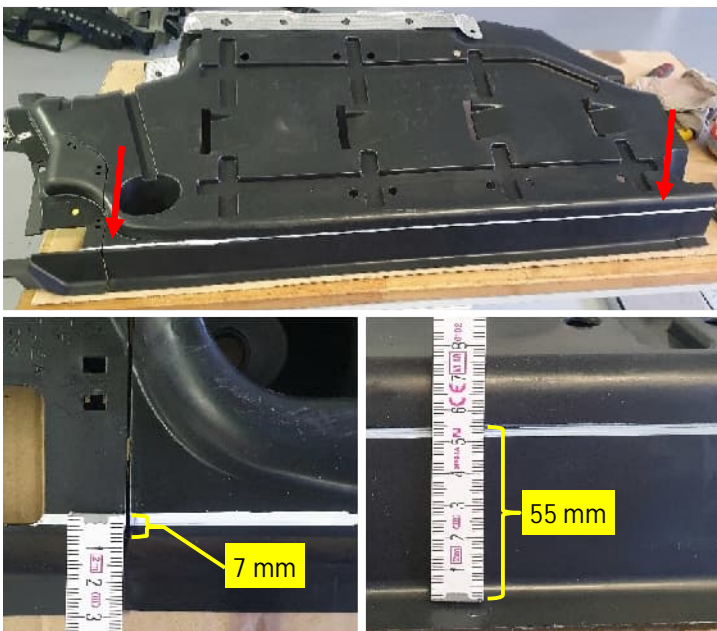
Reinstall the cover in the plastic cladding and place the reinforcing bracket from the inside and centre it on the reinforcements in the cladding. Then transfer the three screw holes onto the cladding and the cover.



Drill the marked screw holes to 7 mm and deburr them.



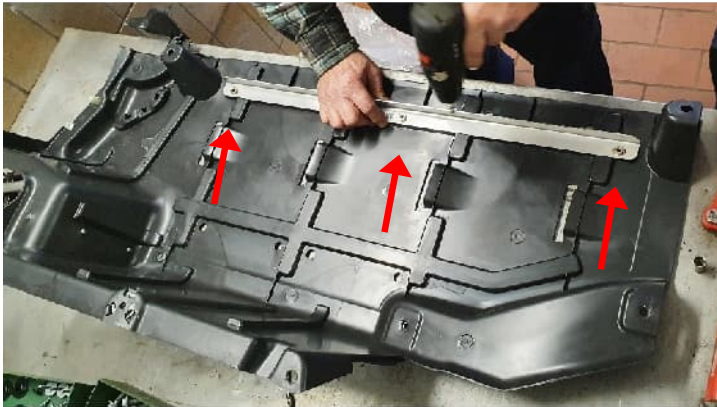
Fasten the reinforcing bracket with the three M6x20 screws supplied, as shown in the pictures on the left. Tighten the screws with 10 Nm.



Mark and cut the plastic cladding on the front right side, see the pictures.



After trimming, clean and deburr the cut edge.



Place the reinforcement bracket supplied for the front (long), as shown in the illustration, on the beading of the panelling from the inside and align it centred. Transfer the holes to the panelling through the nuts on the reinforcement bracket and drill out to 7 mm.



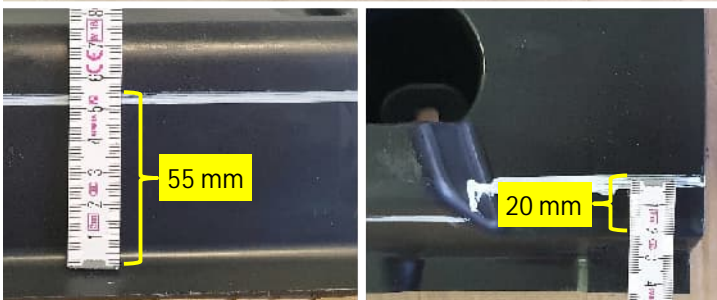
Fasten the reinforcement bracket to the panel using three of the supplied M6x20 screws.

Tighten screws to 10 Nm.

Then reinstall the panel on the vehicle.



Mark and cut the plastic cladding in the middle on the right side as shown in the pictures.



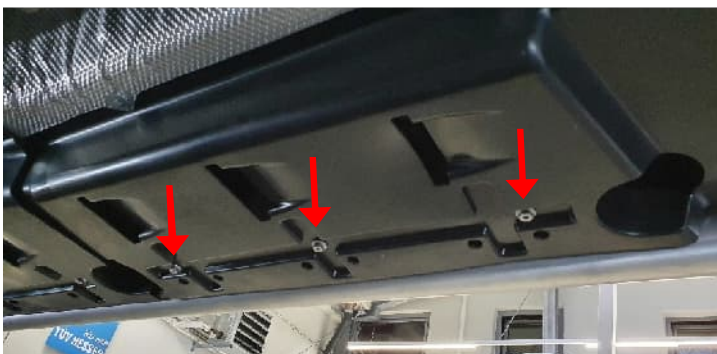


After trimming, clean and deburr the cut edge.



Place the reinforcement bracket supplied for the center (short), as shown in the illustration, on the beading of the panelling from the inside and align it centred. Transfer the holes to the panelling through the nuts on the reinforcement bracket and drill out to 7 mm.

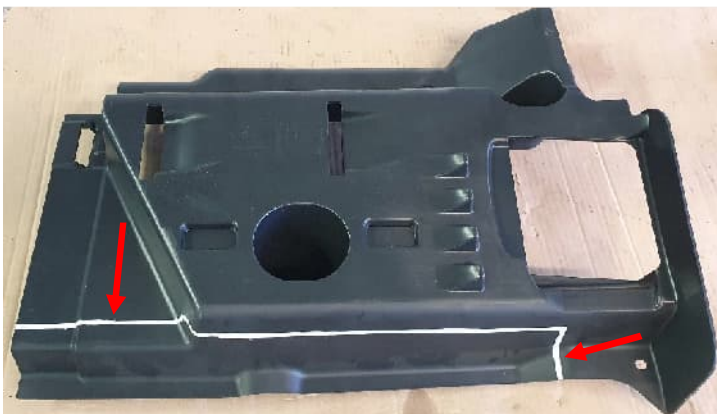
On vehicles with long wheelbase, repeat the procedure for the rear panel.



Fasten the reinforcement bracket to the panel using three of the supplied M6x20 screws.

Tighten screws to 10 Nm.

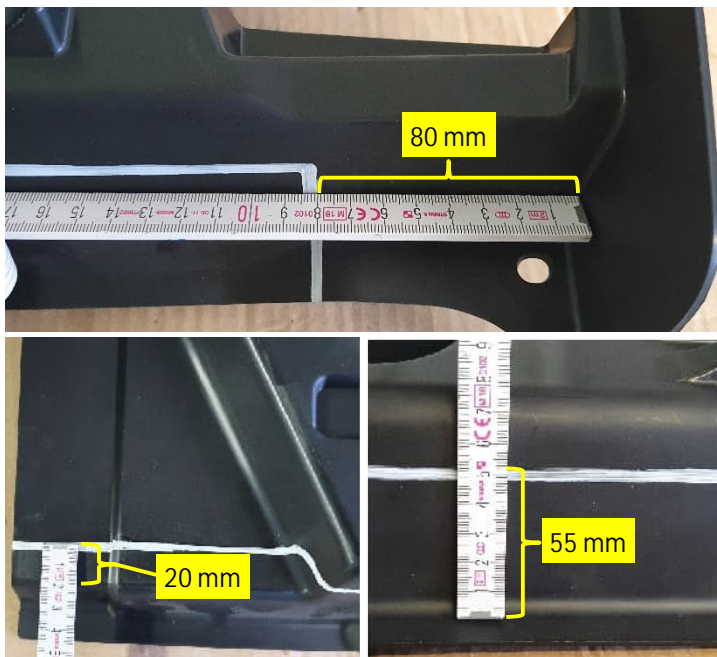
Then reinstall the panel on the vehicle.



Mark and cut the plastic cladding in the rear on the right side as shown in the pictures.



Volkswagen Transporter T5-T6.1		
Rockslider		
Nummer:	1414 0020	Stand: 02.2023
Revision:	03	Sprache: EN



After trimming, clean and deburr the cut edge. Then mount the cladding again on the vehicle.



Fully assembled SEIKEL Rockslider on the vehicle.