



| | | | |
|------------------------------------|-----------|----------|---------|
| Volkswagen Transporter T6.1 | | | |
| Protection plate engine | | | |
| Nummer: | 1415 0000 | Stand: | 06.2021 |
| Revision: | 01 | Sprache: | DE |

Installation guide 1415 0000

This installation guide applies to this part n°/description:

1415 0000 T6.1 – Protection plate „Widder“ for engine and chassis

1415 0001 T6.1 – Protection plate „Desert“ for engine and chassis

Important

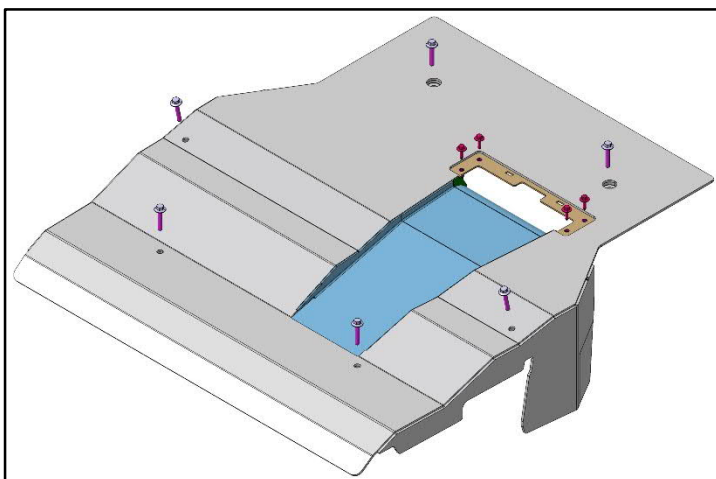
To ensure proper function and optimal quality of our parts, their installation must be done in accordance with this installation guide and according to Volkswagen manufacture's specifications in a professional workshop. Seikel GmbH and its employees shall not be responsible for damage and its consequences of any nature, which are caused due to non-observance or ignorance of these guidelines. Warranties shall be void for incorrectly performed installations.

In order to maintain driving safety and functioning of all moving and electrical parts, we recommend keeping the vehicle underbody free of heavy contaminations.

For this purpose, the existing protection plates of the vehicle underbody (e.g. engine, gearbox, tank and rear axle) also need to be dismantled. A regular cleaning is recommended in this case, e.g. at the end of winter, on and after every use in difficult terrain with e.g. mud, sand/gravel and after water-crossings.

Installation guide

Please refer to the VOLKSWAGEN instructions for the exact working steps as well as the tightening torques. In case of deviation, our specifications shall be applicable.



Parts list

- 1x Protection plate engine
- 6x M8x50 hex collar screw
- 4x M6x25 hex collar screw

Required tools

- torque wrench
- 13 mm socket
- 10 mm socket
- Ø 10 mm drill



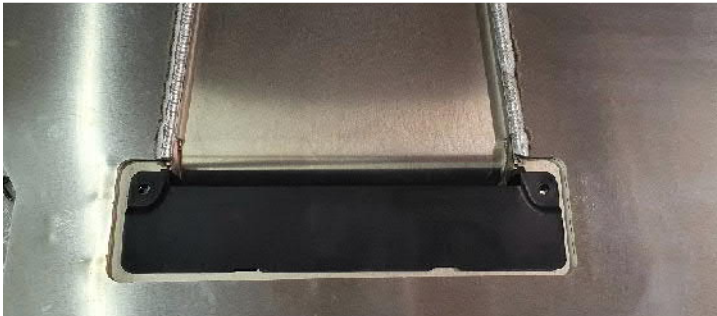
Instructions

Example of a protective plate installed on the vehicle from the first development.

The installation of the further developed protective plate is described below.



Dismantle the engine's sound insulation pan installed on the vehicle and remove the air duct shown in the picture on the left.



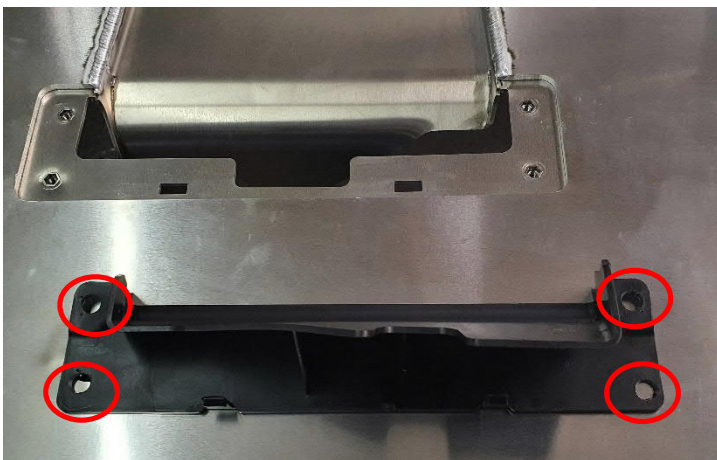
As shown in the picture, insert the air duct at the end of the air inlet of the protective plate into the recess provided and align the two holes in the air duct with the rivet nuts in the protective plate.



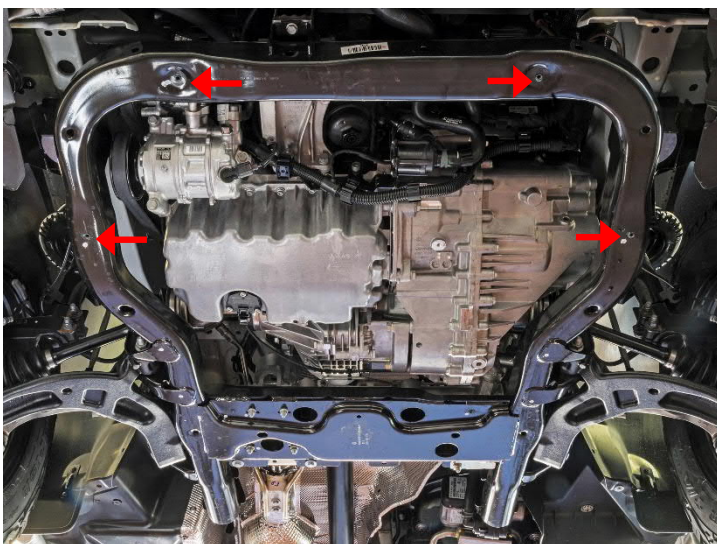
From the opposite side of the protective plate, transfer the position on the air guide through the two rear rivet nuts.



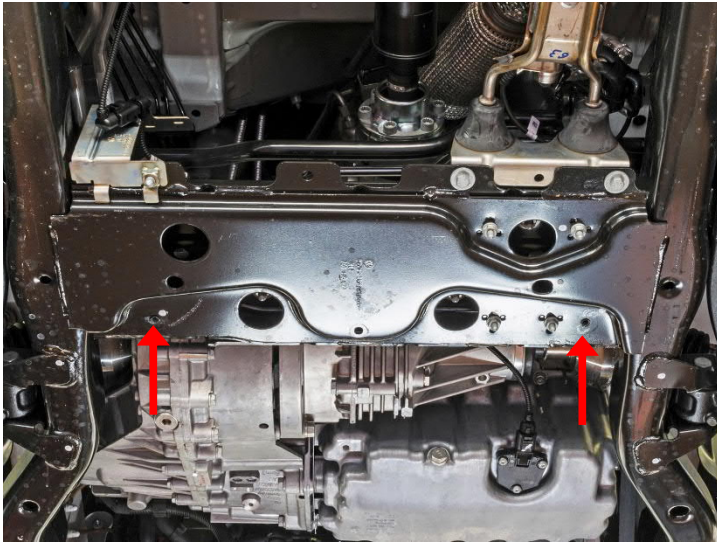
These are now the marks for the two missing holes on the air guide.



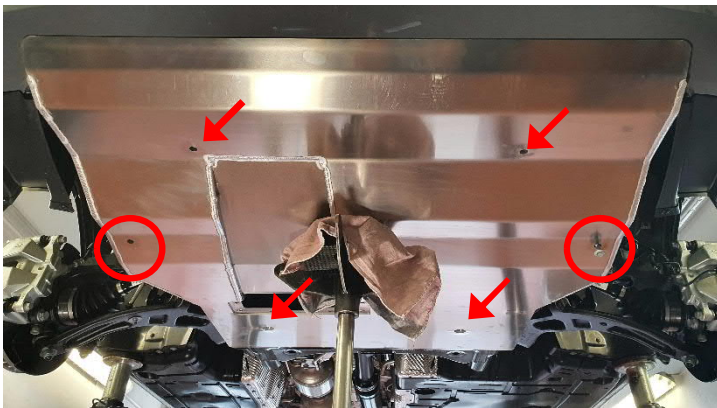
Drill out the two marked positions and the existing holes to \varnothing 10 mm. Then clean and deburr the holes.



The aluminium protection plate on the front four ...



... and the rear two marked threaded inserts to the vehicle.



Screw the engine guard to the original threaded inserts on the engine mount using 6 M8x50 collar screws.

Important:

First tighten the two circled screws with 30 Nm, then tighten the remaining screws with 30 Nm.



Finally, insert the air duct into the the protective plate and tighten it with the 4 M6x25 collar screws supplied. Tighten each of the 4 screws to 10 Nm.