



<b>Volkswagen Transporter T5/T6.1</b>			
<b>Protection plate for right underbody</b>			
Number:	1415 0002	Stand:	06.2021
Revision:	01	Sprache:	DE

## Installation guide 1415 00002

### **This installation guide applies to this parts n°/description:**

1415 0002 T5 GP to T6.1 – Protection plate for right underbody, short wheelbase

1415 0003 T5 GP to T6.1 – Protection plate for right underbody, long wheelbase

## Important

To ensure proper function and optimal quality of our parts, their installation must be done in accordance with this installation guide and according to Volkswagen manufacture's specifications in a professional workshop. SEIKEL GmbH and its employees shall not be responsible for damage and its consequences of any nature, which are caused due to non-observance or ignorance of these guidelines. Warranties shall be void for incorrectly performed installations.

*In order to maintain driving safety and functioning of all moving and electrical parts, we recommend keeping the vehicle underbody free of heavy contaminations.*

*For this purpose, the existing protection plates of the vehicle underbody (e.g. engine, gearbox, tank and rear axle) also need to be dismantled. A regular cleaning is recommended in this case, e.g. at the end of winter, on and after every use in difficult terrain with e.g. mud, sand/gravel and water-crossings.*

## Installation guide

Please refer to the Volkswagen instructions for the exact working steps as well as the tightening torques. In case of deviation, our specifications shall be applicable.



### Parts list short wheelbase

- 1x protection plate for right underbody
- 1x holder 1
- 1x holder 2
- 2x holder 3
- 2x M6 rivet nut (small head)
- 6x M6 rivet nut (large head)
- 22x M6x25 hex collar screw



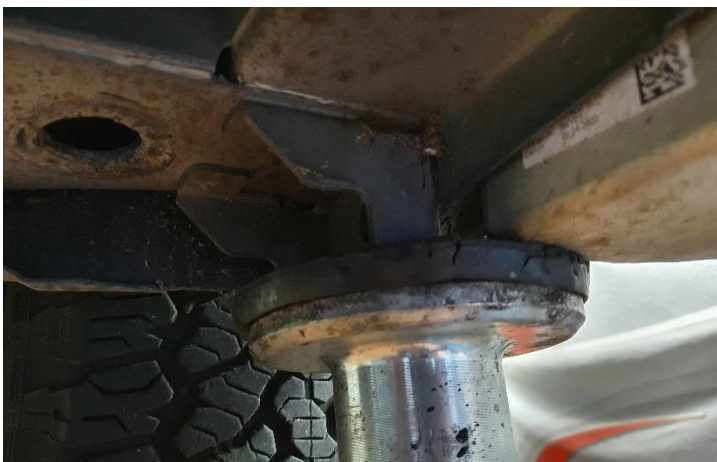
### Parts list long wheelbase

- 1x protection plate for right underbody
- 1x holder 1
- 1x holder 2
- 2x holder 3
- 1x holder 4
- 2x M6 rivet nut (small head)
- 7x M6 rivet nut (large head)
- 26x M6x25 hex collar screw



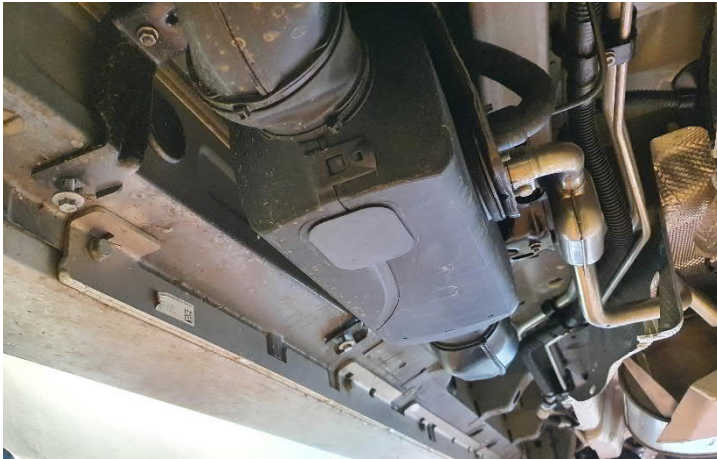
### Recommended special tool

- Rivet nut pliers

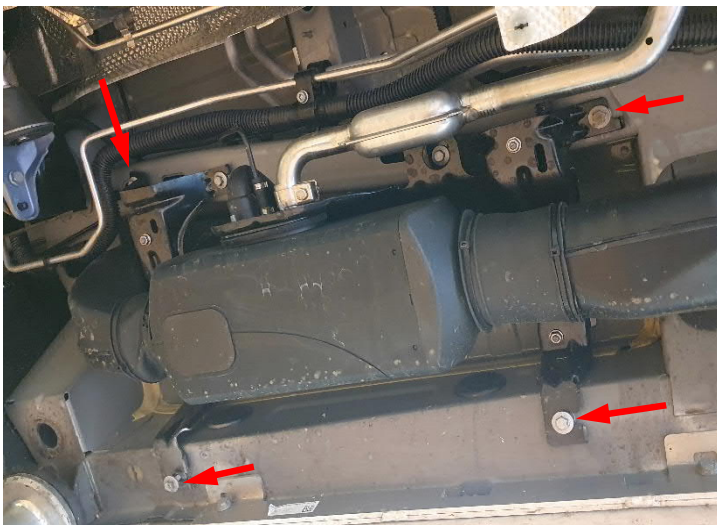


### Instructions

When lifting the vehicle with a jack, make sure that the saddle pad at the front right is positioned as far forward and as far out as possible on the saddle pad of the jack. This space is required for the subsequent attachment of the protection plate.



Dismantle the three-piece underbody plastic trim on the right side of the vehicle.



On vehicles with auxiliary air heating, loosen the four fastening screws of the holder for the auxiliary air heating marked in the picture by approx. 4 to 5 mm.

If no air stand heating is installed on the vehicle, four of the M6 rivet nuts with large heads supplied must be inserted at the positions marked in the picture. The necessary holes for the rivet nuts are already present in the body.

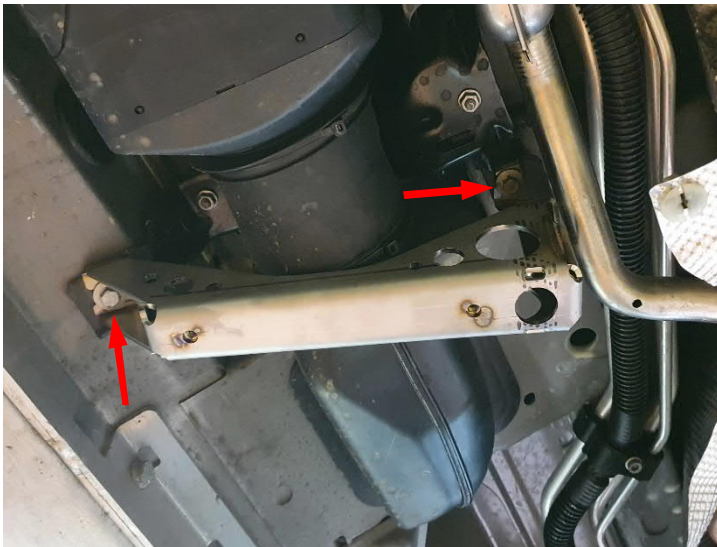


Slide holder 1, as shown in the picture, under the two front loosened screws of the parking heater holder.

If no parking heater is installed, use the M6 x 25 screws supplied.

Align the holder so that it does not touch the lines of the auxiliary air conditioning system. Then retighten the two loosened screws in accordance with Volkswagen specifications.

For vehicles without a parking heater, the screws are to be tightened with 10 Nm of torque.

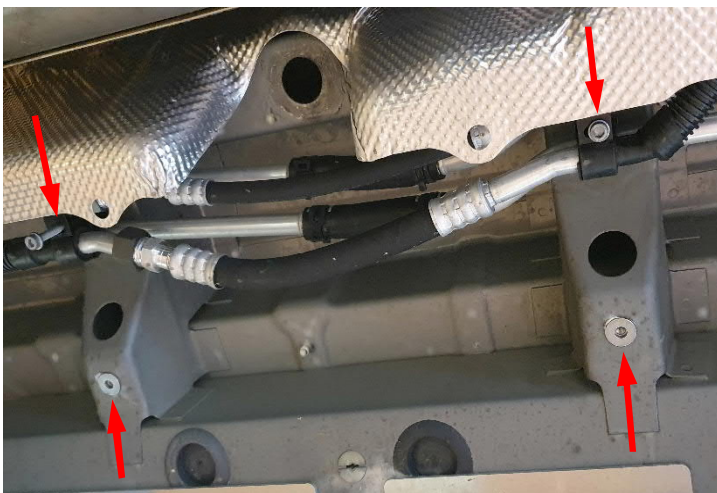


Slide holder 2, as shown in the picture, under the two rear loosened screws of the parking heater holder.

If no parking heater is installed, use the M6 x 25 screws supplied.

Align the holder so that it does not touch the lines of the auxiliary air conditioning system. Then retighten the two loosened screws in accordance with Volkswagen specifications.

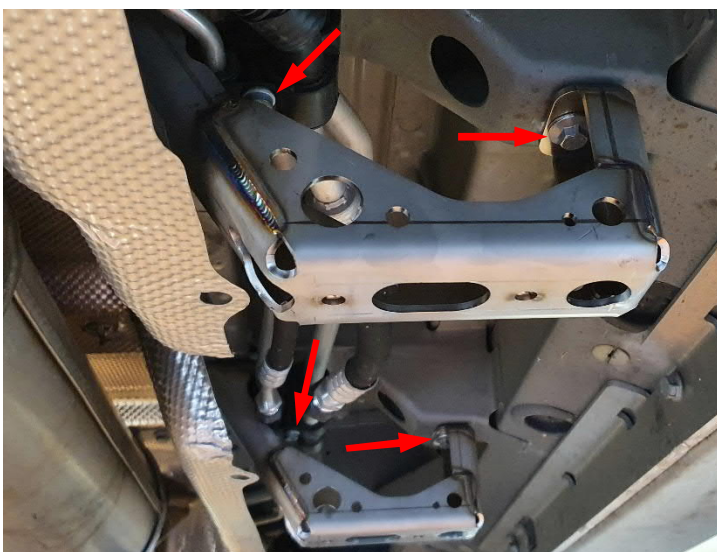
For vehicles without a parking heater, the screws are to be tightened with 10 Nm of torque.



In the rear area of the right underbody, rivet nuts must be inserted at the two body reinforcements shown in the picture. The necessary holes are already present in the body.

The M6 rivet nuts with large heads supplied are inserted at the two lower positions in the picture.

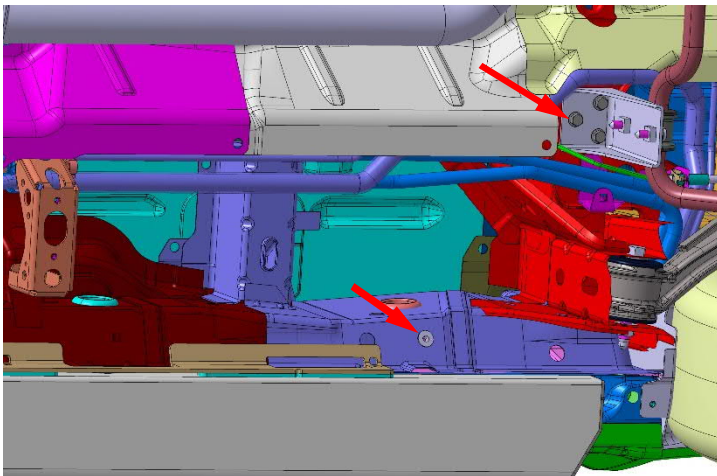
If the vehicle does not have an auxiliary air conditioning system, the M6 rivet nuts with the small head supplied must be inserted at the two upper positions in the picture.



If present, loosen and remove the two cylinder head screws in the holders of the lines for the auxiliary air conditioning system.

Install the two holders supplied as shown in the picture and fasten them with the M6 x 25 screws supplied and tighten them with 10 Nm of torque.

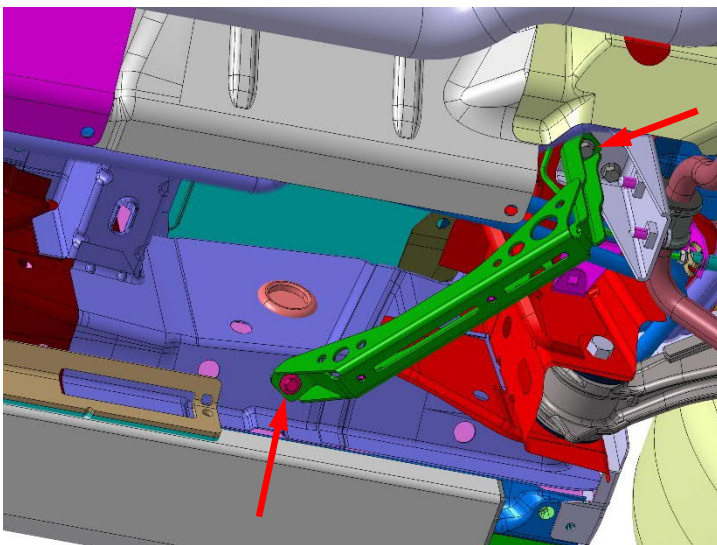
For vehicles with auxiliary air conditioning, holder 3 is pushed under the holder for the air conditioning lines and the cylinder head screws are to be tightened in accordance with Volkswagen specifications.



### Installation holder 4 – only for long wheelbase!

In the sill, remove the plastic insert for fastening the underbody panel in front of the rear axle mount and insert one of the M6 rivet nuts with a large head supplied instead.

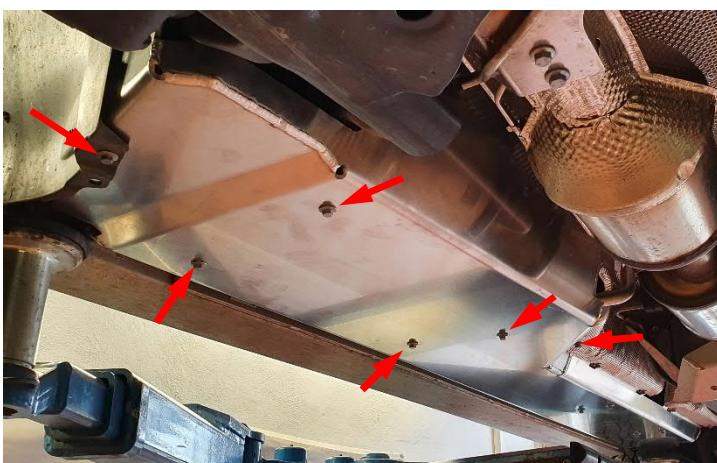
On the right holder of the rear axle stabilizer, remove the M8 screw marked with the arrow for mounting the holder.



Install the supplied holder 4 as shown in the picture and fasten it with the M6 x 25 screw supplied and the previously removed M8 screw.

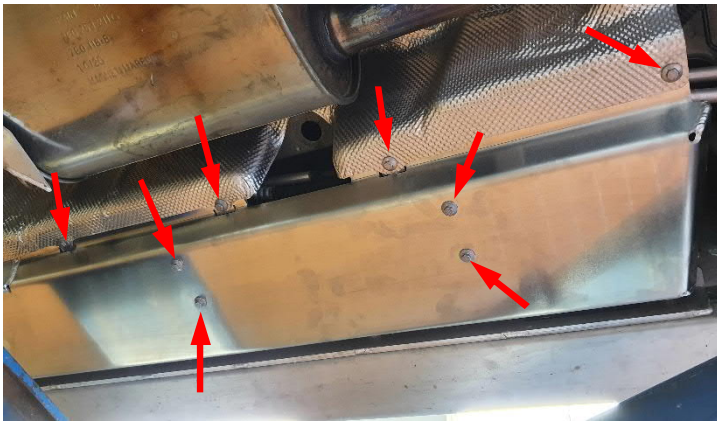
Tighten the M6 screw with 10 Nm of torque.

Tighten the M8 bolt of the holder for the stabilizer in accordance with Volkswagen specifications.

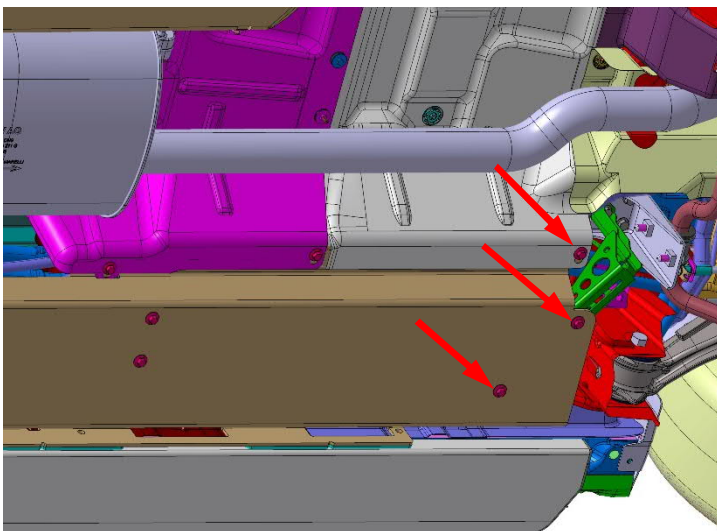


When installing the protection plate supplied, make sure that the heat protection plate of the exhaust system overlaps with the protection plate from the outside. The same applies to the front right wheel arch liner.

The protection plate is fixed to the holders with 8 M6x25 screws. The heat shield is fixed with 5 screws and the wheel arch liner with a screw of the same type.



All 14 screws are to be tightened with 10 Nm of torque.



In the case of the protection plate for vehicles with a long wheelbase, three additional M6 x 25 screws are used for fastening to holder 4 and the rear heat protection plate.

These screws are also to be tightened with 10 Nm of torque.