



**Cette notice d'installation s'applique à l'article sous référencé:**

1414 0003 T5 to T6 – Tank protection plate, all models except for single cabins

1415 0004 T6.1 – Tank protection plate, all models except for single cabins



## Important

**To ensure proper function and optimal quality of our parts, their installation must be done in accordance with this installation guide in a professional workshop and according to the car manufacturer's specifications. Seikel GmbH and its employees shall not be responsible for damage and its consequences of any nature, which are caused due to non-observance or ignorance of these guidelines. Warranties shall be void for incorrectly performed installations.**

*In order to maintain driving safety and functioning of all moving and electrical parts, we recommend keeping the vehicle underbody free of heavy contaminations. This applies especially after every use in difficult terrain with e.g. mud, sand/gravel and water crossings.*

*Otherwise, it is a good idea to clean the underbody regularly, e.g. at the end of the winter half-year.*

*For this, existing protective plates of the vehicle underbody (e.g. engine, gearbox, tank & rear axle) should be dismantled beforehand.*

## SEIKEL warranty certificate through product registration

When you purchase and install a SEIKEL product, you need a warranty certificate so that we can cover costs in the event of a warranty claim. You can download this warranty certificate from our website at [www.seikel.de/downloads](http://www.seikel.de/downloads). Please fill out the form and return it to us by e-mail or fax. This is the only way to ensure that we can cover the costs in the event of a warranty or guarantee claim.

The certificate is valid for both - commercial and private customers.

## Installation instructions

The exact working steps as well as tightening torques are to be taken from the instructions of the respective vehicle manufacturer. In case of deviations, our specifications of Seikel GmbH apply.



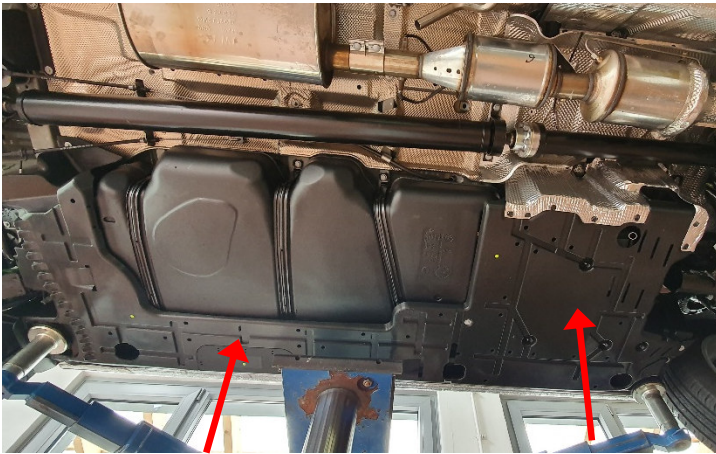
**Parts list**

- 1 x tank protection plate
- 1 x fixing bar for door sill
- 1 x bracket on prop shaft front
- 1 x bracket on prop shaft rear
- 1 x bracket on traverse front
- 1 x cover plate for door sill
- 17 x M8x30 hex screw
- 4 x M8 nut, self-locking
- 1 x M8 M8 riveting nut
- 1 Stencil sheet (only with Kit 1414 0003)



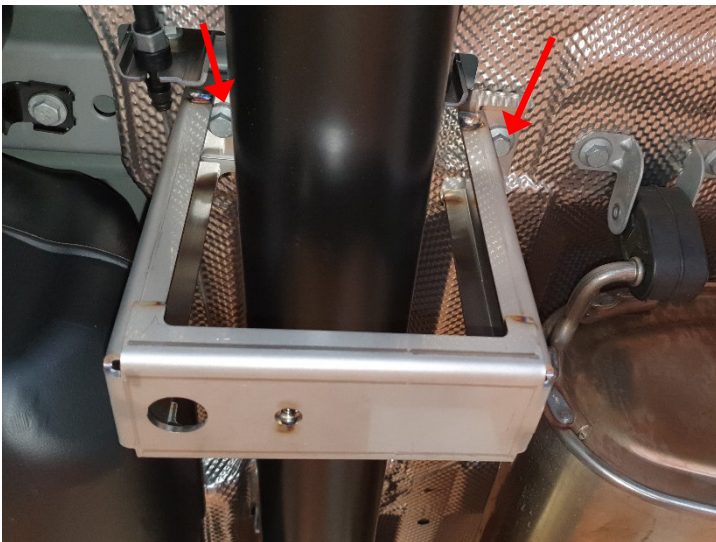
**Recommended special tool**

Rivet nut pliers



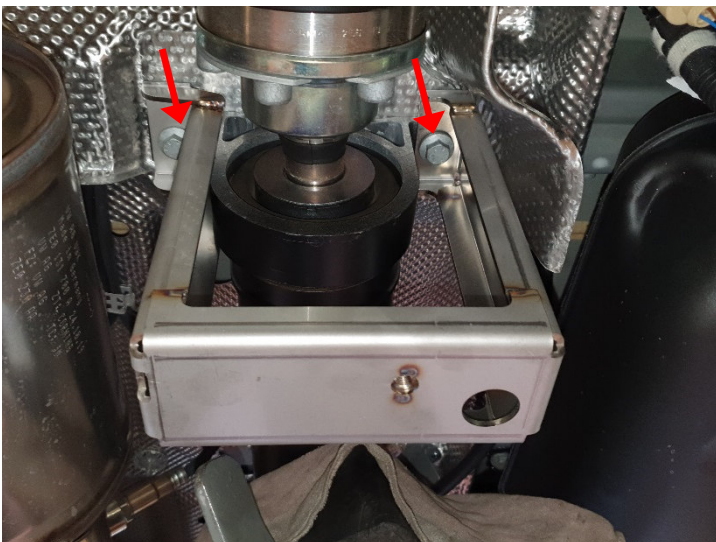
## Instructions

Dismount both underbody plastic claddings on the left.



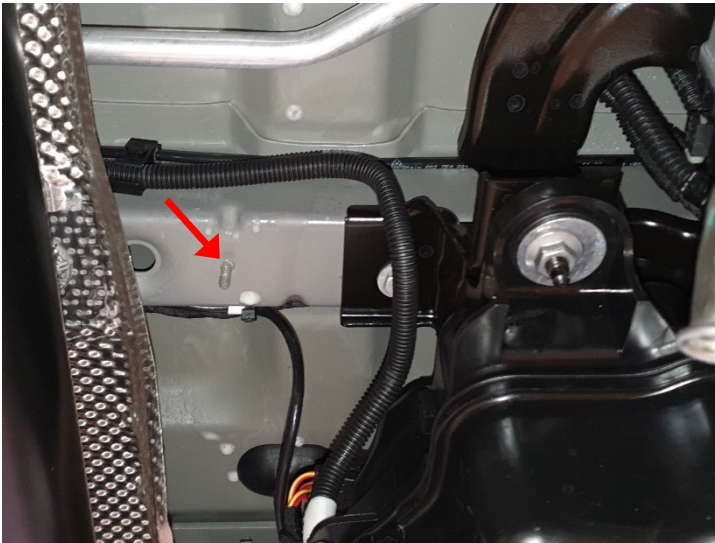
Assemble rear bracket on prop shaft with to the right threaded hole on the side, as shown in the image.

Use two new M8x30 screws provided in the delivery and tighten with 35 Nm.



Assemble front bracket with to the right threaded hole on the side, as shown in the image.

Use two new M8x30 screws provided in the delivery and tighten with 35 Nm.



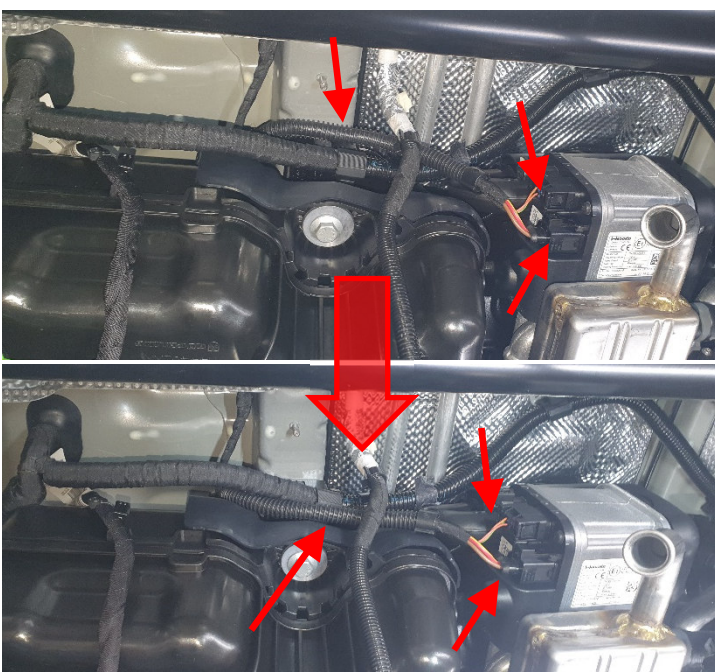
**Preparation T5 and T6**  
**For fastening the holder for the crossmember:**

Remove existing grub screw on front of crossmember with cut-off grinder.



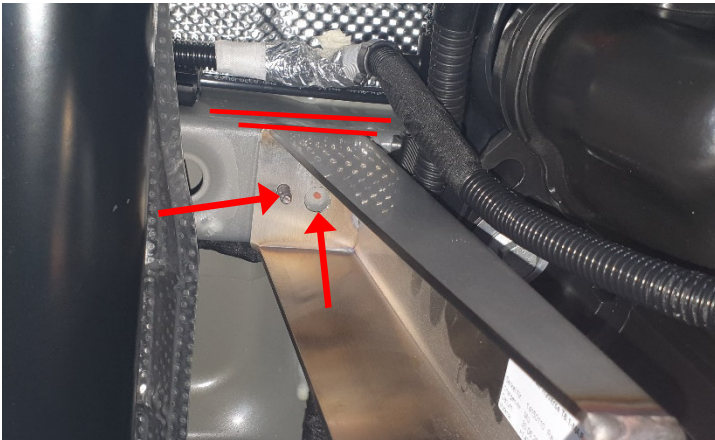
Fasten the supplied template plate between the holder of the auxiliary heater and the crosshead, with the label facing downward, and align it parallel to the crosshead. Then transfer the position of the small hole of the template to the crosshead by marking it.

Finally, remove the template again and attach the auxiliary heater bracket to the crosshead according to factory specifications.

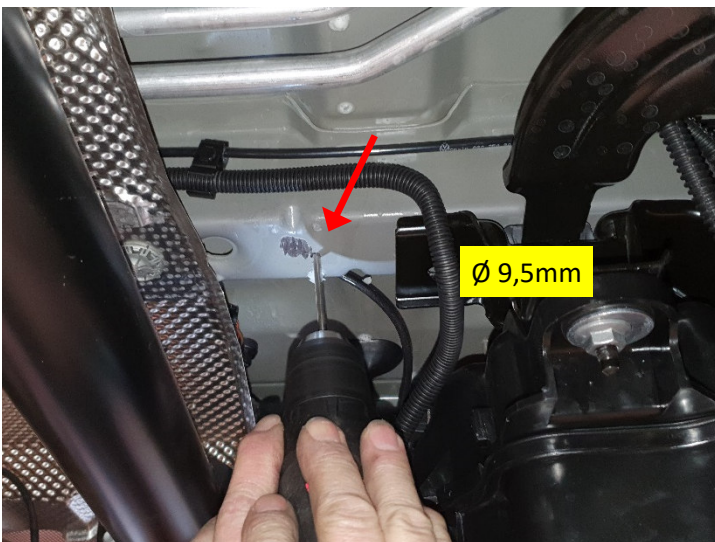


**Preparation T6 .1**  
**for mounting bracket for crossbar:**

For vehicles with auxiliary heater, the wiring harness to the auxiliary heater control unit must be re-routed as shown in the second picture.

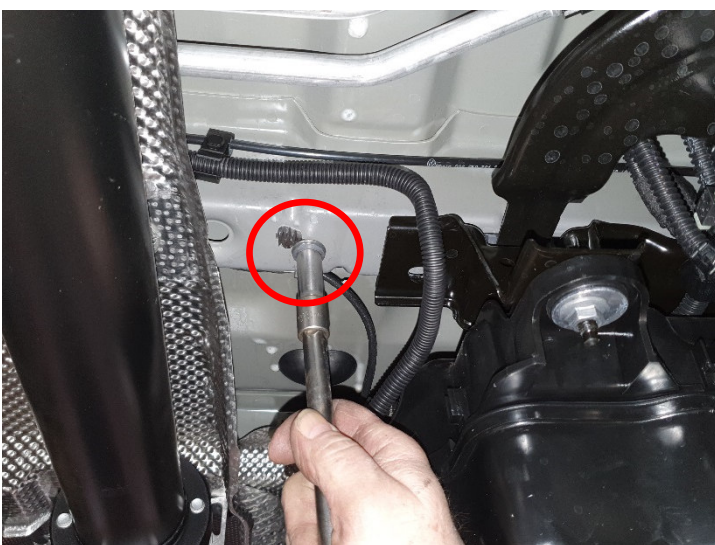


Position holder for crosshead, with the smaller of the two holes in the holder, on existing set screw and align parallel with crosshead.  
Then – as shown in the image – indicate the drilling point by making a drill hole in the U-profile cover.



**Mounting bracket for crosshead T5 to T6.1:**

Drill a 9.5 mm hole at the marked position on the crosshead.



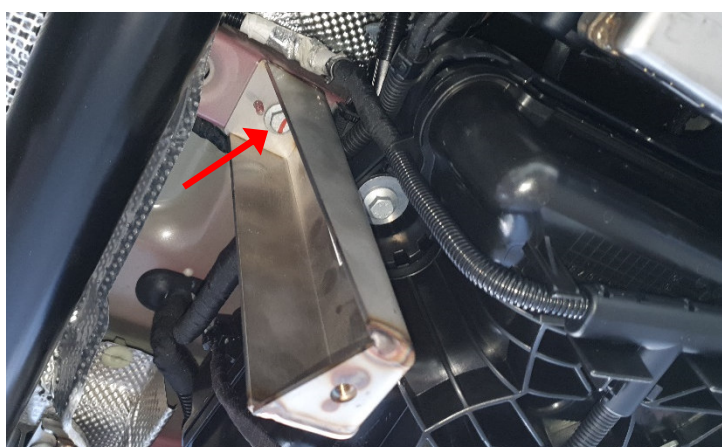
Fix hex collar screw M8 with hex rivet nut M8 and carefully drive in the existing drill hole in order to expand it.



Remove rivet nut again, deburr drill hole and protect stress marks as well as traverse against rust.



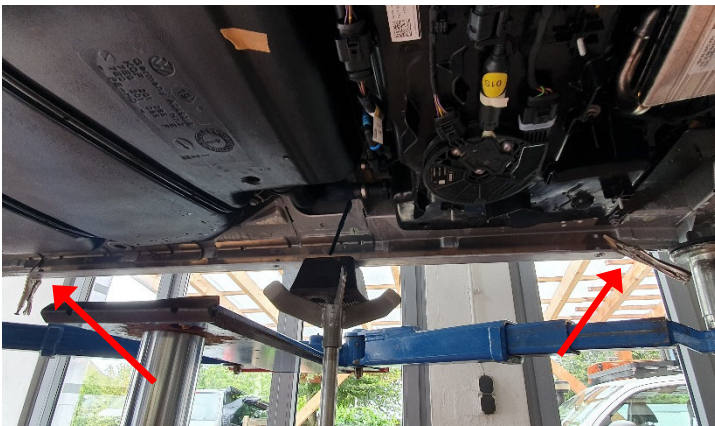
Insert rivet nut M8 with rivet pliers.



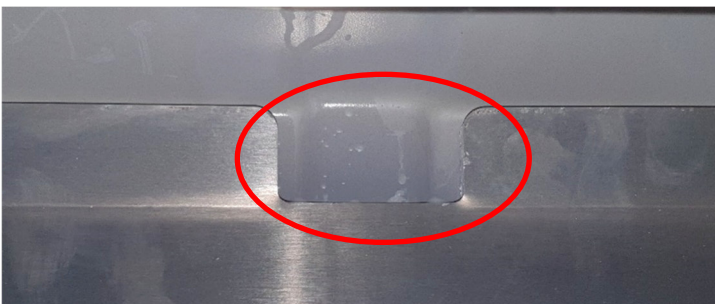
Fasten holder with M8x30 screws and tighten with 25 Nm.



Remove all sealing plugs in the left sill of the vehicle body.



Position the fastening strip on the inside of the sill rebate and align the recesses centrally with the elevations in the rebate. Now fix the fastening strip to the rebate at the front and rear using gripping pliers. Make sure that the fastening strip also rests against the top of the vehicle body.



Mark all 4 holes in the fastening rail on the door sill rebate.





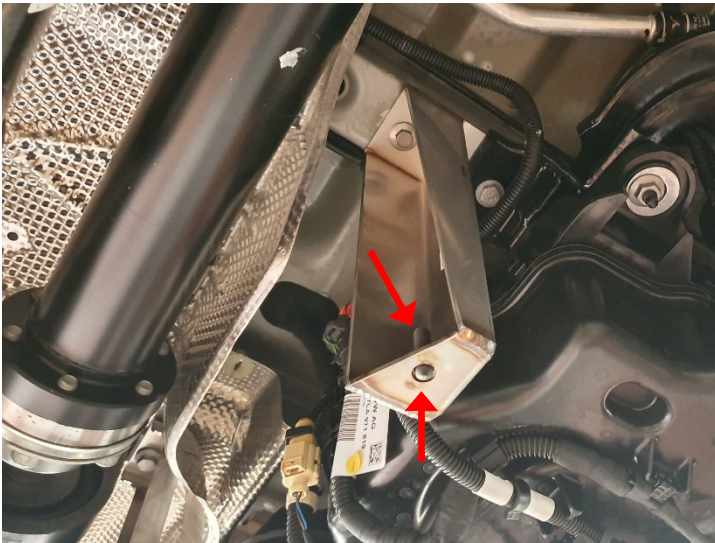
Drill all the points with a 9,5 mm drill trough through the side sill rebate.



Deburr all the drill holes and treat with anti-corrosive protection.



Tighten the fixing bar with 4 screws M8x30 and self-locking nuts M8 with 25 Nm.



The following 5 steps only apply to protective plates that do not have a hole for the holder crosshead at the front.

Step 1:  
Bring the set screw M8 in the bracket on traverse to front in position.



Step 2:  
Attach the tank protector to the two brackets under the cardan shaft and the mounting strip using 6 M8x30 screws.

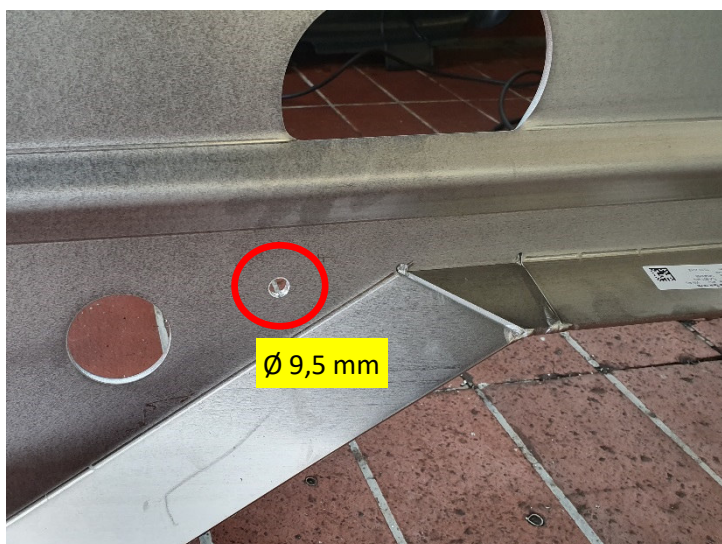


Step 3:  
Using a soft-head punch down the marking of the bracket to front onto the traverse – as seen from underneath the tank protection.

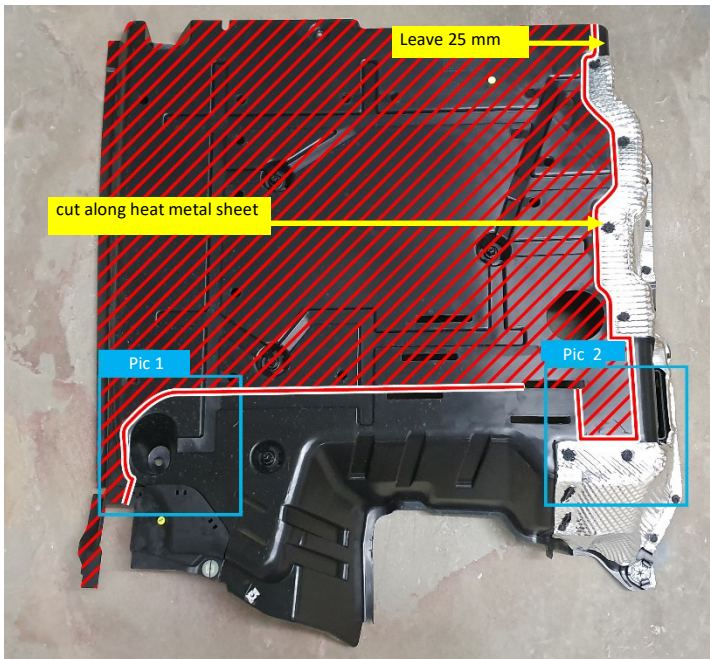


Step 4:  
Dismount tank protection again and remove the set screw from the bracket.

The punch marks should now be visible in the tank protection.



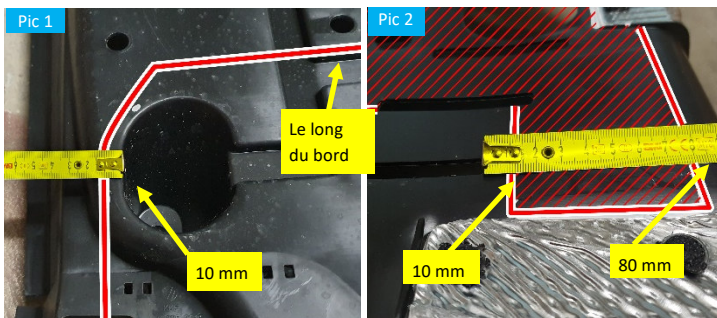
Step 5:  
Drill the punch mark with 9,5 mm drill and deburr the drill the drill hole on both sides.



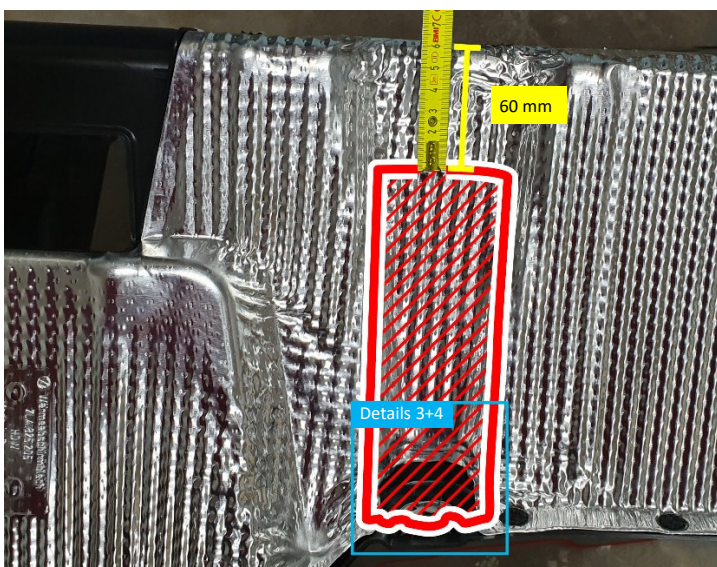
Mark **underbody cladding on left at the front** as shown in the image and cut it.

Details on marking the lines are described in the following detail images 1 and 2.

The area marked red is no longer installed onto the vehicle!



Detail images 1 and 2 from the main image.

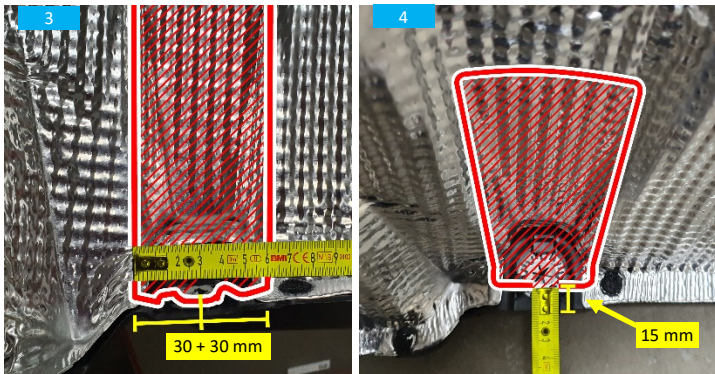


Mark the section for bracket on the right side of underbody cladding at the front left and cut it out.

The top line has a distance of 60 mm to the component edge.

The area marked red is removed!

The following detail images 3 and 4 show further views and installation notices.

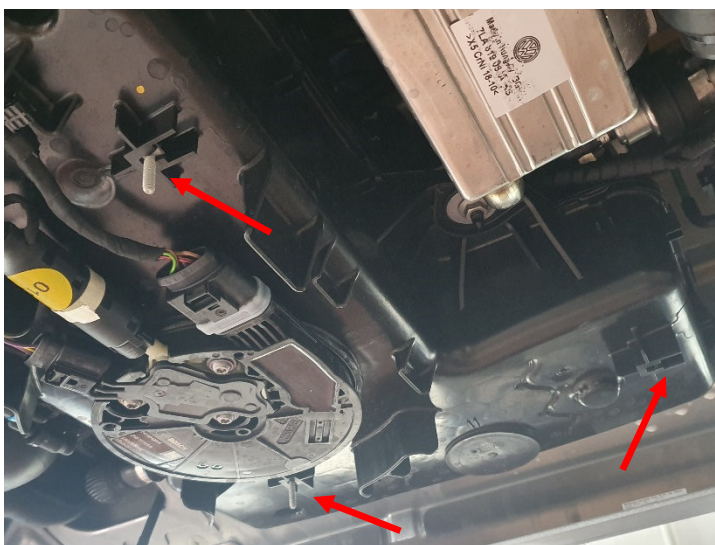


Detail image 3:

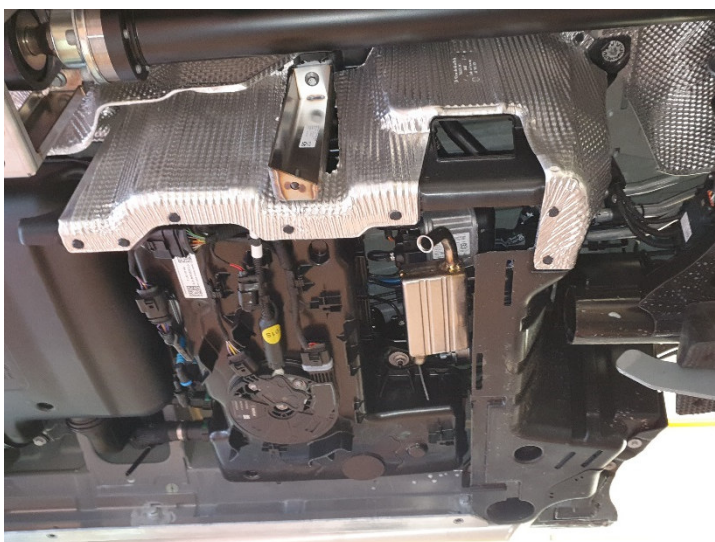
The section is aligned in the centre onto the fastening point and is overall 60 mm wide (from fastening point 30 mm to the right and 30 mm to the left).

Detail image 4:

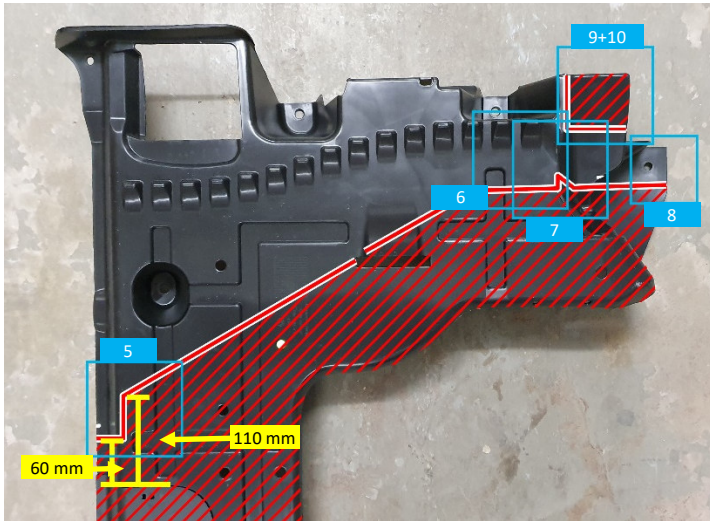
The red white line has a distance of 15 mm to the edge of the component.



Remove the three fastening pins for the underbody cladding that are attached to the AdBlue or SCR tank.



Deburr all cut-out edges and mount the cladding back onto the vehicle.

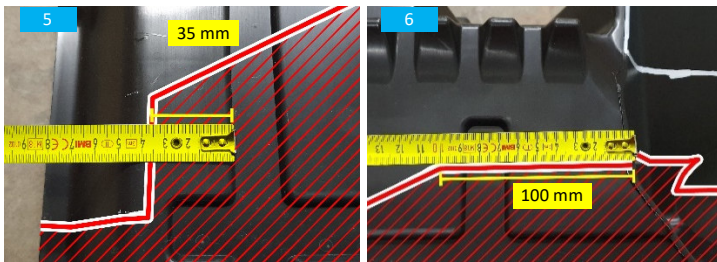


**Underbody cladding on left rear short wheel base:**

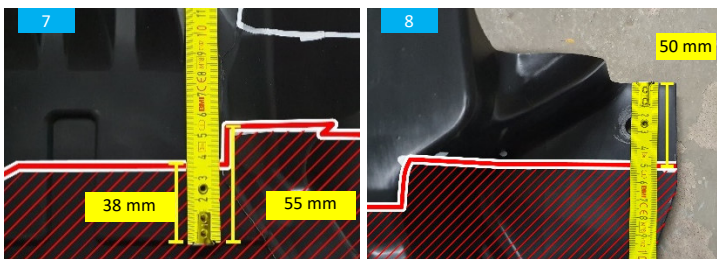
Mark and cut out as shown with red white line in the image

Further details on drawing the lines are described in the following 6 detail images (5-10).

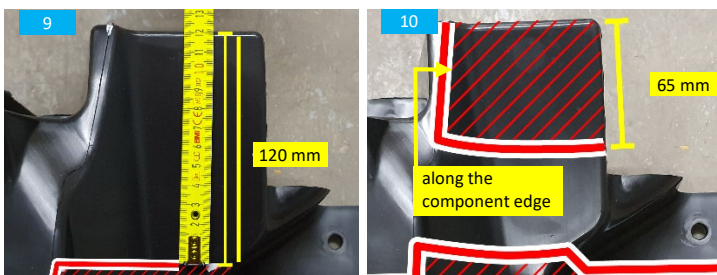
The area marked red is no longer installed onto the vehicle!



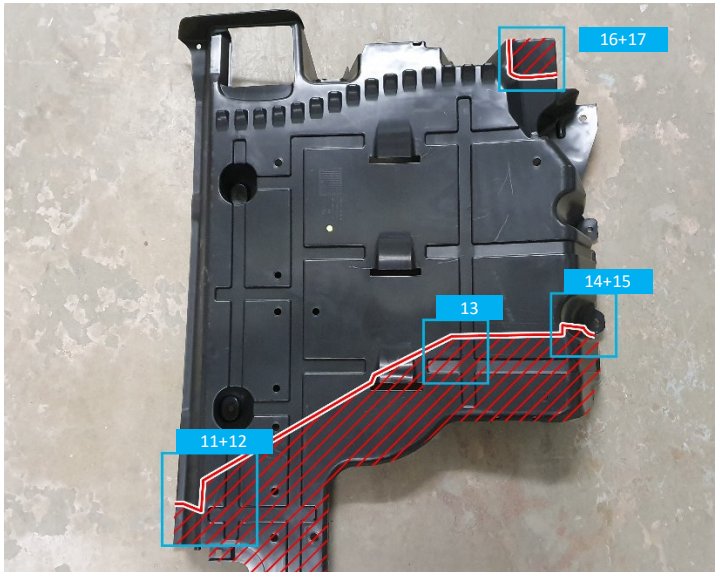
Detail images 5 and 6 from the main image.



Detail images 7 and 8 from the main image



Detail images 9 and 10 from the main image.

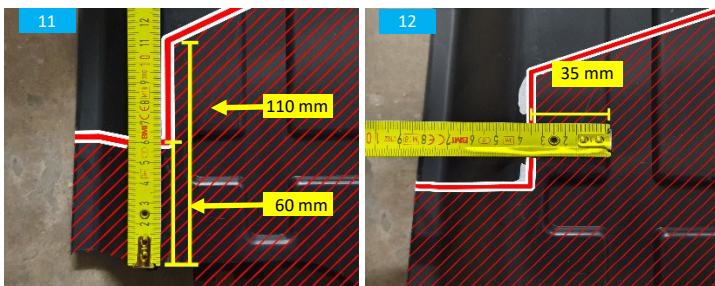


**Underbody cladding on left rear long wheel base:**

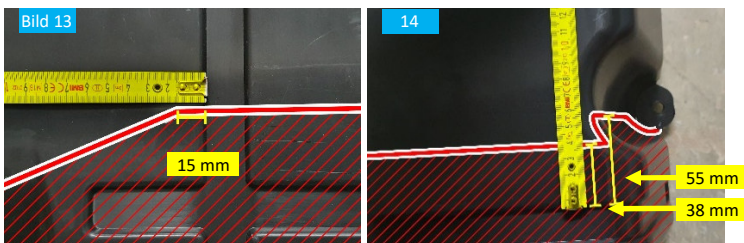
Mark and cut out as shown with red white line in the image.

Further details on drawing the lines are described in the following 7 detail images (11-17).

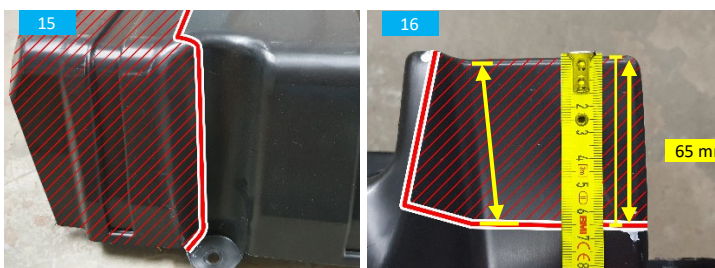
The area marked red is no longer installed onto the vehicle!



Detail images 11 and 12 from the main image.

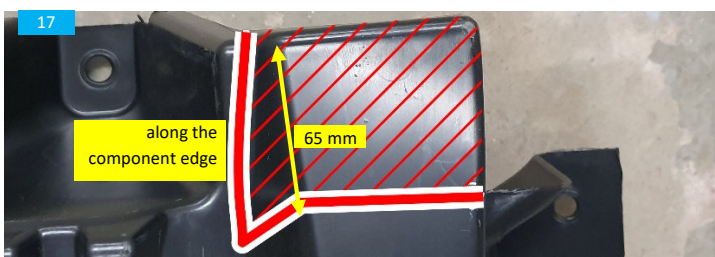


Detail images 13 and 14 from the main image.

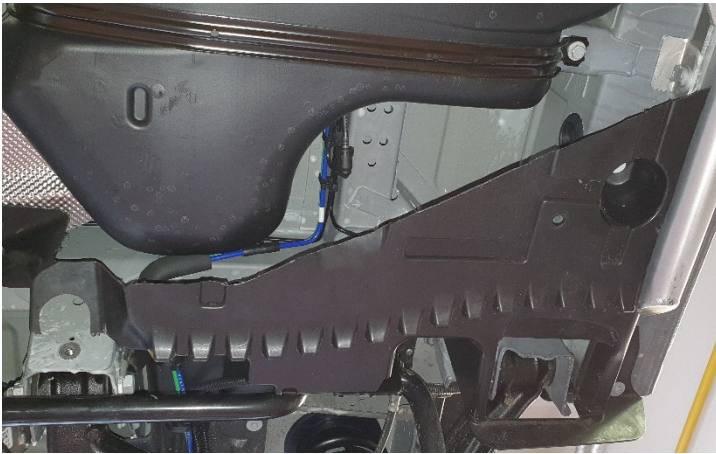


Detail image 15= side view from image 14.

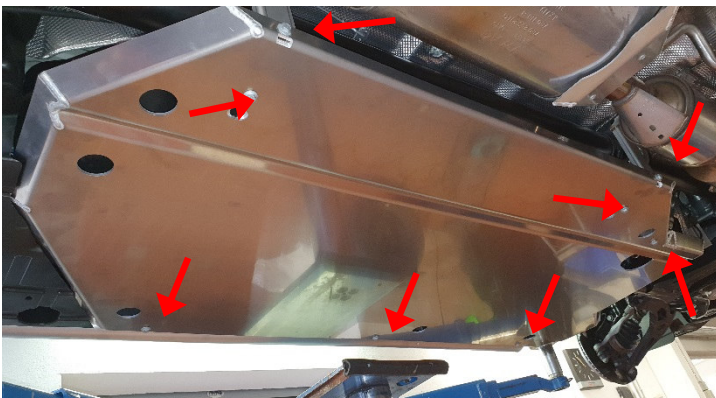
Detail image 16 from the main image.



Detail image 17= same area like shown in image 16, but other view.



Deburr all cut-out edges and mount the cladding back onto the vehicle.



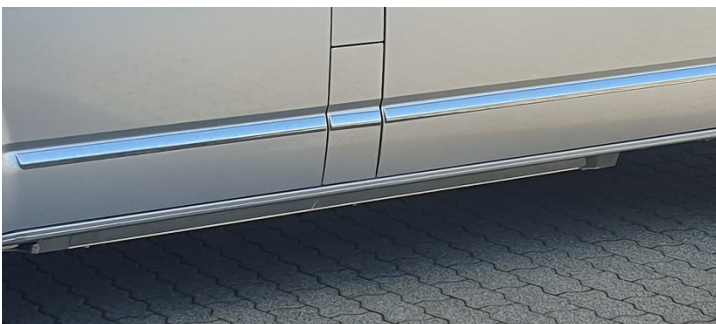
Mount the protection plate using a transmission jack. Ensure that the protection plate protrudes over the rear underbody cladding – as seen in the image.

Screw the protection plate together with bracket and fastening rail using 8 M8x30 screws.



The panel for the underbody cladding must also be screwed at the fastening point on the rear left – as seen in the image

Tighten all the above-mentioned screws with 30 Nm.



Final view of the tank protection plate on the car below the door sill.