



Volkswagen Transporter T6.1 MAR			
Slide for the middle silencer			
Number:	1415 0005	Status:	09.2021
Revision:	00	Language:	EN

Installation guide 1415 0005

This installation guide applies to this part n°/description:

1415 0005 T6.1 MAR – Slide for the middle silencer at vehicles with exhaust gas cleaning close to the engine



Volkswagen Transporter T6.1 MAR			
Slide for the middle silencer			
Number:	1415 0005	Status:	09.2021
Revision:	00	Language:	EN

Important

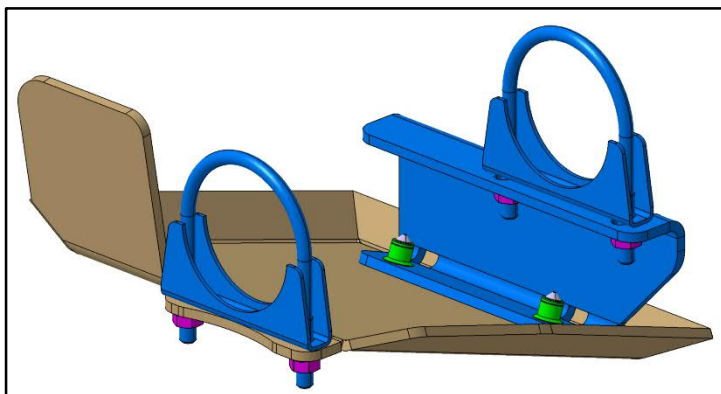
To ensure proper function and optimal quality of our parts, their installation must be done in accordance with this installation guide and according to Volkswagen manufacture's specifications in a professional workshop. SEIKEL GmbH and its employees shall not be responsible for damage and its consequences of any nature, which are caused due to non-observance or ignorance of these guidelines. Warranties shall be void for incorrectly performed installations.

In order to maintain driving safety and functioning of all moving and electrical parts, we recommend keeping the vehicle underbody free of heavy contaminations.

For this purpose, the existing protection plates of the vehicle underbody (e.g. engine, gearbox, tank and rear axle) also need to be dismantled. A regular cleaning is recommended in this case, e.g. at the end of winter, on and after every use in difficult terrain with e.g. mud, sand/gravel and water-crossings.

Installation guide

Please refer to the Volkswagen instructions for the exact working steps as well as the tightening torques. In case of deviation, our specifications shall be applicable.



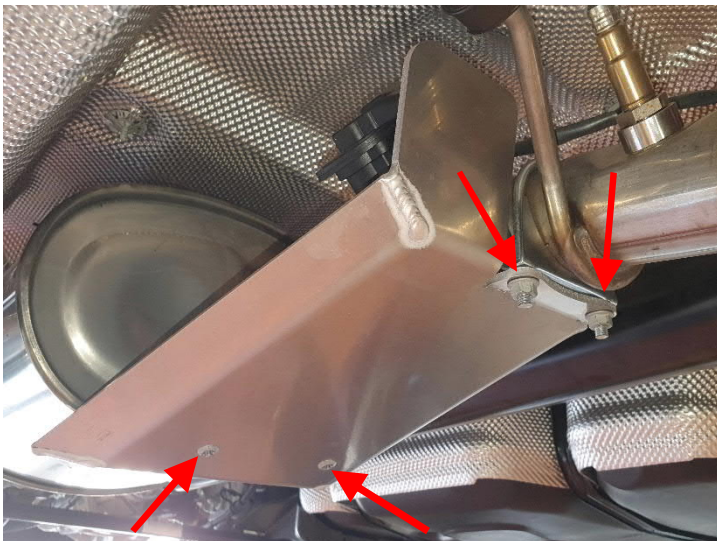
Parts list

- 1x slide for the middle silencer
- 1x slide holder
- 2x button-head screw
- 2x pipe clamp
- 4x hexagon collar nut, self-locking



Instructions

Attach the U-clamp to the pipe in front of the middle silencer with the slide holder and 2 M8 nuts but do not tighten them yet.



Attach the protective plate to the holder with 2 M8 countersunk screws and tighten them to 15 Nm. The connection clamp at the exhaust pipe may need to be turned to install the protective plate as illustrated. In forward orientation of the vehicle, the protective plate is to be mounted to the exhaust pipe using the second U-clamp supplied with the kit. Tighten all nuts to 15 Nm. Cut off protruding threads of the U-clamp.



Align the protective plate horizontally on the middle silencer and tighten the two nuts of the U-clamp to 15 Nm as well.