



Volkswagen Transporter T6			
Snorkel			
Nummer:	1514 0000	Stand:	01.2021
Revision:	06	Sprache:	EN

## Installation guide 1514 0000

### This installation guide applies to this part n°/description:

- 1514 0000 T6 – Snorkel
- for engine with 110 kW and 150 kW (EU 6)
  - for left-hand drive vehicles



Volkswagen Transporter T6			
Snorkel			
Nummer:	1514 0000	Stand:	01.2021
Revision:	06	Sprache:	EN

## Important

To ensure proper function and optimal quality of our parts, their installation must be done in accordance with this installation guide and according to Volkswagen manufacture's specifications in a professional workshop. SEIKEL GmbH and its employees shall not be responsible for damage and its consequences of any nature, which are caused due to non-observance or ignorance of these guidelines. Warranties shall be void for incorrectly performed installations.

## Installation guide

Please refer to the Volkswagen instructions for the exact working steps as well as the tightening torques. In case of deviation, our specifications shall be applicable.

## NOTE!

**All the drill holes and breakthroughs must be deburred from both the sides. Metal swarfs are to be removed / vacuumed up immediately, and it has to be ensured that no swarfs fall into the hollow space in the body!**

**Apply paint (as per current valid VW repair manual "Paint", refer to ELSA):**

1. Apply wash primer and allow it to dry in accordance with the item description. A hot-air dryer can be used, if necessary. We recommend: 1k Wash primer LLS MAX 106 M2.
2. Apply filler and allow it to dry in accordance with the item description. A hot-air dryer can be used, if necessary. We recommend 2K-HS filler LLS MAX 202 M2.
3. Apply base coat on visible areas based on the vehicle-specific varnish and allow base coat to dry in accordance with the item description. A hot-air dryer can be used, if necessary.
4. Protect all cutting edges, hollow spaces or drill holes additionally with anti-corrosion wax, if required using a small brush. We recommend transparent preservative wax AKR 321 M 15 4.

## Parts list

for left-hand drive vehicles



- 1x pipe
- 1x snorkel pipe
- 1x suction head
- 3x bind rivet
- 6x hex nut M6, self-locking
- 6x lens head screw M6x20
- 1x cylinder head screw M6x16
- 7x flat washers
- 1x rivet nut M6
- 1x clip
- 2x hose clamps 80-100 mm
- 1x hose clamp 100-120 mm
- 1x suction pipe, pre-assembled
- 1x clamping section
- 1x drill template for air feed-through (1)
- 1x drill template for breakthrough  
waterbox (2)



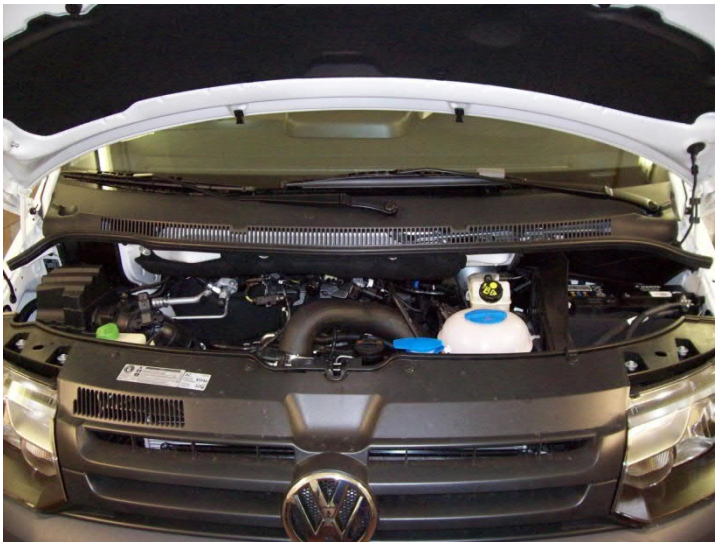
## Special tool

- Rivet nut pliers



## Instructions

Dismount wheel and inner wheel housing liner on the right.



Dismount left and right wiper arms, waterbox cover and waterbox sheet.



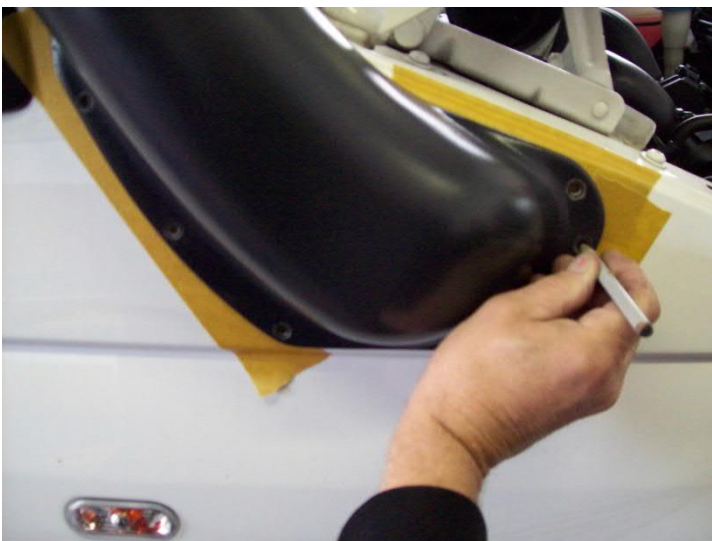
Mask the fender with adhesive tape to avoid scratches. Place the drill template for the air feed-through on the fender and align to the outline of the fender and fix.



Mark the big section for the air feed-through on the fender, drill in the centre and extend to  $\varnothing$  110 mm. Also cut identical hole from the partition panel behind the fender, as seen in the image.



Deburr both the sections internally and externally,



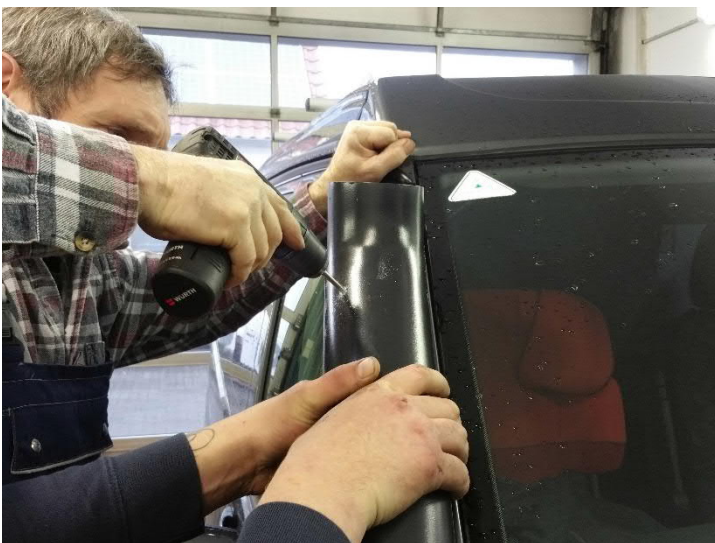
Join snorkel pipe and mark screw drill holes. Then drill the marked points to 7 mm.



Mask A-pillar with adhesive tape.



Align snorkel pipe to fender and temporarily mount using lens head screws M6x20 and 6 M6 nuts.



Press the snorkel pipe on the A-pillar and using a long 8 mm drill machine, drill through the already drilled hole in the air intake pipe in the A-pillar.



Remove the snorkel pipe again and with a drift punch, shape the inside panel of the A-pillar to the point where there is enough space for inserting the rivet nut.



Deburr all edges, remove drilling chips and swarfs and treat against rust, as specified on page 2.



Insert rivet nut M6 in the A-pillar using rivet nut pliers.



Deburr all edges, remove drilling chips and swarfs and treat against rust, as specified on page 2.



Insert the cylinder head screw M6x16 in the drill hole in snorkel pipe from inside and attach the snorkel pipe to the vehicle.



Fix the snorkel pipe to the fender using 6 lens head screws M6x20 and 6 collar nuts M6.  
Tighten all 7 screws hand tight.



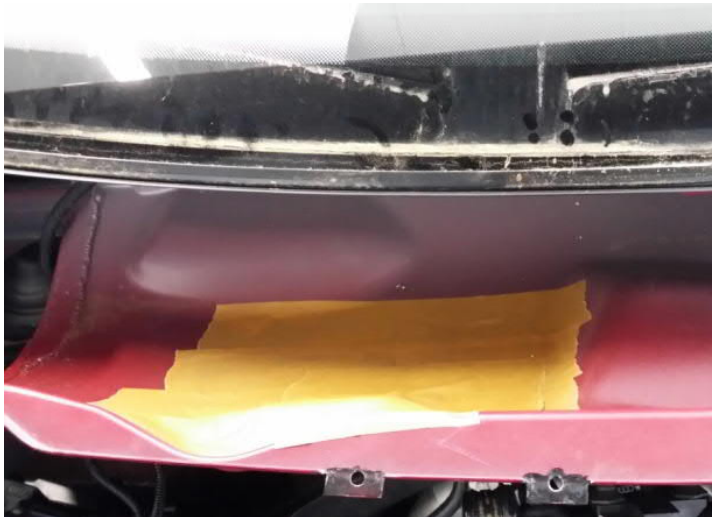


Volkswagen Transporter T6			
Snorkel			
Number:	1514 0000	Stand:	01.2021
Revision:	06	Sprache:	EN

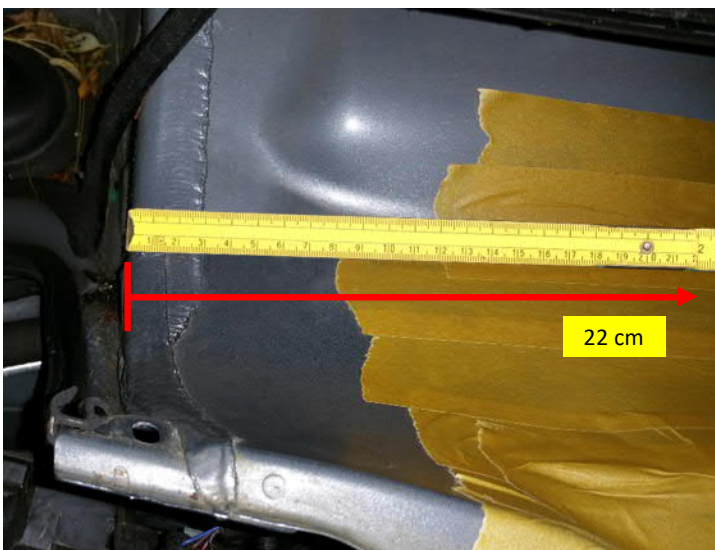


Place the suction head on the snorkel tube and align the opening so it is facing away from the direction of travel. Transfer the existing three holes in the suction head to the snorkel tube and drill through with a diameter of 5mm. Then, secure the suction head to the snorkel tube using suitable rivets.

Close up the hole in the snorkel tube for attachment to the A-pillar with the clip provided.

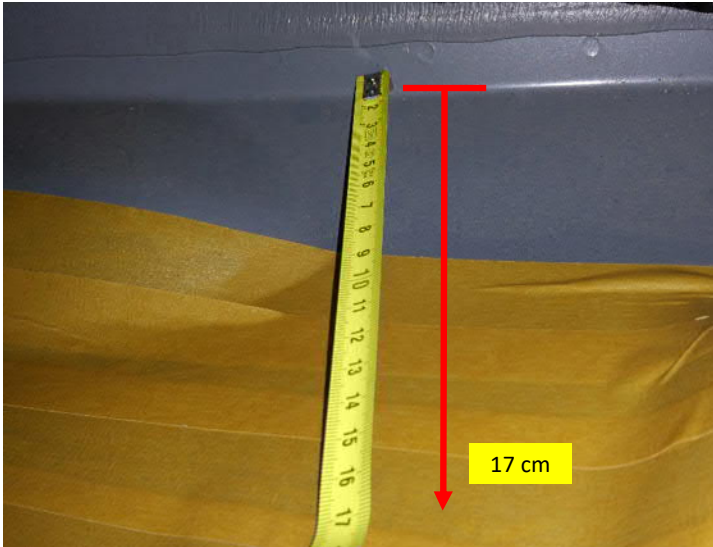


Clean the area to be treated in waterbox and mask.



Measure, centre and mark the area of tube ducts.

Mark on 22 cm from the break-off edge in waterbox on the right side as seen from the front.



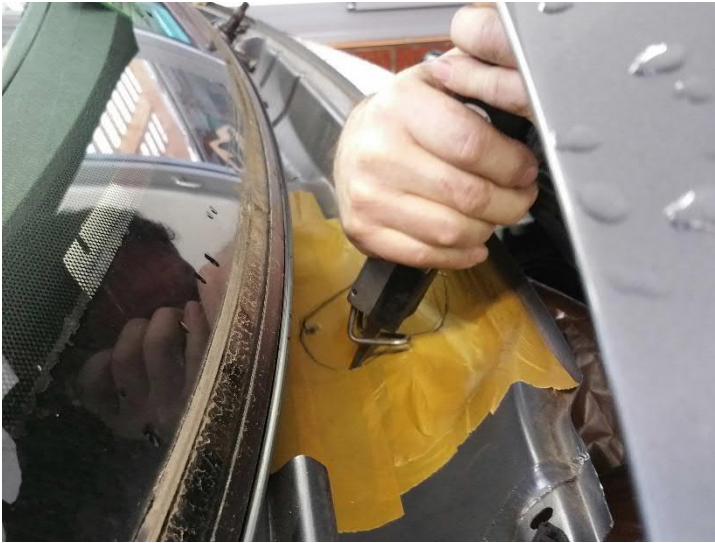
Mark 17 cm to the front from the rear edge in waterbox.



Fix the drilling template (2) provided in the delivery and mark the section for the breakthrough in waterbox on the intersection of both the earlier marked dimensions.



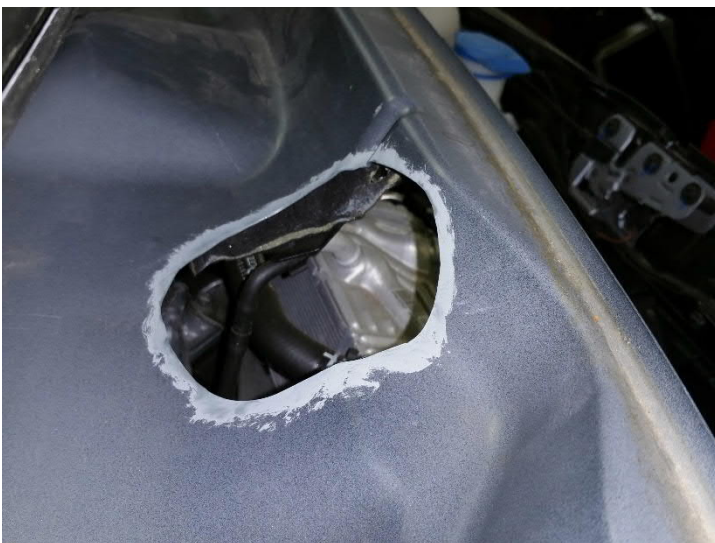
Within the marked circle, drill a hole for the start point of cutting.



Cut at the marked section using body-panel saw.



Cut the damping matting below the waterbox corresponding to the section.



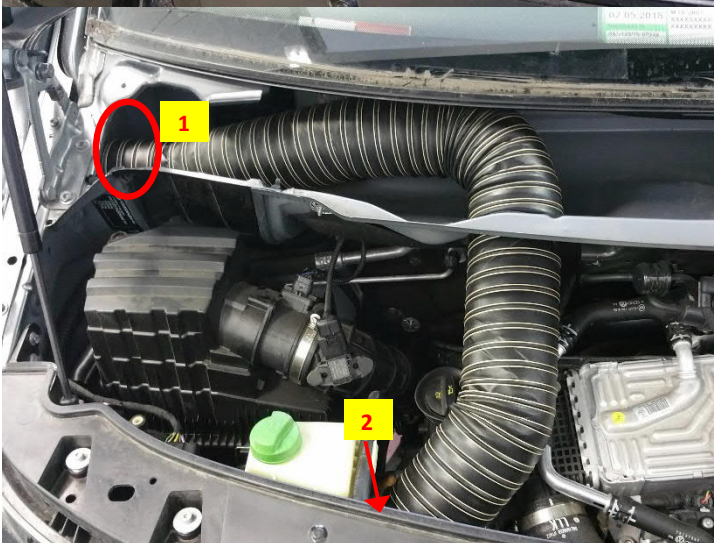
Deburr section and treat with anti-corrosive coating as per the specifications on page 2.



Assemble clamping section, if required adjust/cut with factory tools.



Dismount original suction pipe at "1" and mount the pre-assembled suction pipe provided in the delivery using the hose clamps provided in the delivery 100-120 mm ("1+2") on the air filter bottom part. If required, rework the connecting pipe of the pre-assembled suction pipe, so that it fits in the air filter housing without any problem.



Fix the pipe provided in the delivery between snorkel pipe socket in waterbox (1) and suction pipe (2) and fasten with the 80-100 mm hose clamps provided in the delivery.



Volkswagen Transporter T6			
Snorkel			
Nummer:	1514 0000	Stand:	01.2021
Revision:	06	Sprache:	EN



Re-assemble waterbox sheet, waterbox cover and wiper arms on the left and right.

View of the completely mounted snorkel.

**Note:** Then align the suction head on snorkel backwards!

(Volkswagen guidelines for warranty.)