



Volkswagen Transporter T5/T6			
Tyre clearance			
Nummer:	1912 0018	Stand:	10.2017
Revision:	04	Sprache:	EN

Installation guide 1912 0018

This installation guide applies to this part n°/description:

1912 0018 T5 + T6 – Adjust wheel housings on tyre

Required for 245/75 R16 or 245/70 R17



Volkswagen Transporter T5/T6			
Tyre clearance			
Nummer:	1912 0018	Stand:	10.2017
Revision:	04	Sprache:	EN

Important

To ensure proper function and optimal quality of our parts, their installation must be done in accordance with this installation guide and according to Volkswagen manufacture's specifications in a professional workshop. SEIKEL GmbH and its employees shall not be responsible for damage and its consequences of any nature, which are caused due to non-observance or ignorance of these guidelines. Warranties shall be void for incorrectly performed installations.

Installation guide

Please refer to the Volkswagen instructions for the exact working steps as well as the tightening torques. In case of deviation, our specifications shall be applicable.

NOTE!

All the drill holes and breakthroughs must be deburred from both the sides. Metal swarfs are to be removed / vacuumed up immediately, and it has to be ensured that no swarfs fall into the hollow space in the body!

Apply paint (as per current valid VW repair manual "Paint", refer to ELSA):

1. Apply wash primer and allow it to dry in accordance with the item description. A hot-air dryer can be used, if necessary. We recommend: 1k Wash primer LLS MAX 106 M2.
2. Apply filler and allow it to dry in accordance with the item description. A hot-air dryer can be used, if necessary. We recommend 2K-HS filler LLS MAX 202 M2.
3. Apply base coat on visible areas based on the vehicle-specific varnish and allow base coat to dry in accordance with the item description. A hot-air dryer can be used, if necessary.
4. Protect all cutting edges, hollow spaces or drill holes additionally with anti-corrosion wax, if required using a small brush. We recommend transparent preservative wax AKR 321 M 15 4.



Parts list

- 2x spacer washers for steering



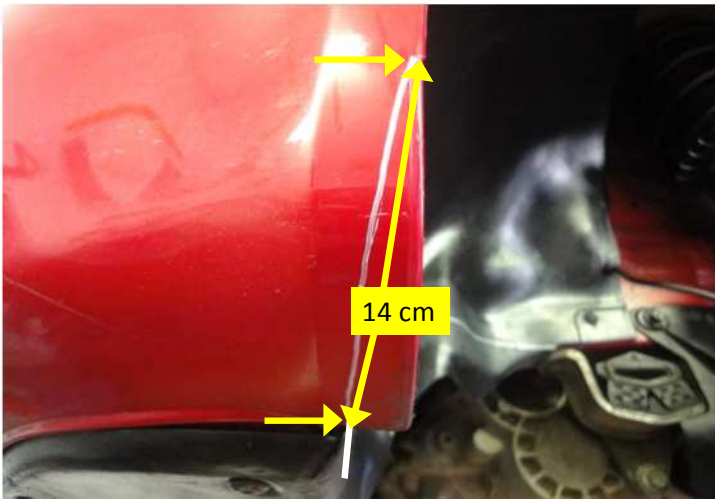
Instructions

Clean the areas indicated.



Draw horizontal line on the internal mud guard as extension from vehicle side member, as shown in the image.

Draw vertical line, as shown in the image, on the internal mud guard as extension of the lower part up to the upper line and cut excess material.



As seen in the image, the nose of the bumper must be marked flush on the internal wing with a length of 14 cm going down to zero and then severed.



With hot air gun, heat up the yellow highlighted area and press the protruding rounding inwards and hold tight till the internal mud guard is cooled again.



As seen in the image, heat up the white highlighted area with a hot air gun for deformation.



Compress the protruding internal wing using flat metal part until the internal wing rests against body framework at the back.



Remove the left and right steering rack gaiter and loosen track rod joints. Slip the spacer washers provided in the delivery greased onto the toothed rack and re-assemble everything as per the manufacturer's instructions.

Double cabin model VW T5 / T6

In case of this vehicle type, the rear axle fenders are heated up in the area of rear holder using a hot air gun. Bend the fender ends backwards till there is a clearance of 60 mm to tyres.

For this measurement, the vehicle must stand on the wheels.